

Train Orders

Official Newsletter of the New Jersey Division,
Mid-Eastern Region, National Model Railroad Association



January 2022

Volume 33 Number 1

It's Merchantville in January

John V. Gallagher Superintendent, New Jersey Division

Happy New Year! We return to Grace Episcopal Church for our January 8, 2022 meet. Their facility provides a generous hall for our meet plus the tables for our contest, sales, door prizes and raffles. Other tables are available for sales and swap activities.

Parking is available on the street and with a small lot adjacent to the hall. Other parking will be available in the town parking lot on East Park Avenue. [From Maple Avenue, turn north on South Center Street –traffic signal intersection - and go north one block to East Park Avenue. Turn right and go up East Park to a parking lot on the left. Fire Station is across the street on the right.]

After our meet and the lunch hour, the Cherry Valley Model Railroad Club's O Scale layout will be open for member visits. It is in the basement of the church and shouldn't be missed. Tables with books and other model railroad items will be on sale in a room adjacent to the layout.

Home layouts will be open in the afternoon for your visits. There are five choices available. We will distribute layout information at the meet. Be sure to bring a **mask** for wearing during the meet and during the home layout visits to protect the families. With the just announced new version of the COVID virus, we must practice masking and social distancing to protect our aged membership and our families. Only fully vaccinated members can attend. [Does **NOT** include the booster!] Those not vaccinated and others who cannot attend for other reasons can participate through ZOOM.

While we do not reach the quality of a CNN broadcast, we learned techniques that improve our broadcasts. Director Rick Stoneking took over Zoom tasks during the November meet and will continue to implement new techniques. Look for the ZOOM link in the MailChimp message during the week preceding the meet. We plan to open the ZOOM about 8:30AM or after.

It is January and the weather may provide us with driving challenges. Should we need to cancel the meet, we plan to still conduct the meet on ZOOM. Monitor your email if dangerous weather is forecast. Drive with care and walk carefully if the outside surfaces are slippery. In the prototype, railroaders receive the safety reminder: **FOLLOW THE SAFE COURSE.**



Bill Howard's Wining entry "Junk, Junk & More Junk"

Next Division Meet

Saturday January 8, 2022
9 a.m. to 12:00 noon
Grace Episcopal Church
7 East Maple Avenue
Merchantville, NJ 08109

Contest:

How Can You Show Your Railroad to a Possible Investor?

Clinics:

Gerry Michael

HO Scale Tilt-up Construction with Plaster.

John Loesch

DCC Mobile Decoder Installation.

For Table Reservations contact

John Gallagher at 856 228-2239
johnv.gallagher39@gmail.com

In This Issue

| | |
|-------------------------------|----|
| November Meet | 1 |
| Schedules | 2 |
| MER Convention Report | 3 |
| Model Contest News | 4 |
| Stay Alive Circuit | 6 |
| Anniversary Gondola | 8 |
| Layout Tours..... | 9 |
| Do You Remember? | 10 |
| Golden Spike Appl. Form | 11 |
| Conrail 2022 Calendar | 12 |

Train Orders

Official Newsletter of the New Jersey Division. J. Division,
NMRA

P.O. Box 276

Crosswicks, NJ 08515-0276

<https://njdivnmra.org>

Train Orders is published 5 times per year for the NMRA members and friends of the New Jersey Division. Online newsletter is always available at NJ Division website. Mailed hardcopy newsletter is \$15.00 per year. The opinions expressed do not necessarily reflect those of the Division. Products and publications mentioned in Train Orders in no way constitute an endorsement by the Division.

Contributing to Train Orders

Train Orders welcomes contributions from the New Jersey Division membership. Letters, articles, photos and other items may be submitted to the editor, Fritz Plenefisch, at fplen3@verizon.net or to 327 Sharps Lane, Hamilton, NJ 08610-1334. Please include return postage if you would like materials returned.

Deadline for the next Train Orders issue: February 1, 2022

Superintendent and Director of Clinics

John Gallagher

johnv.gallagher39@gmail.com

856 228-2239

Clerk/Secretary

Joe Zebrowski

609 268-9451

trackjack@comcast.net

Member Contact Chairman

Geert Marien

732 757-1061

geert@mindspring.com

Director-Editor

Fritz Plenefisch

609 585-7660

fplen3@verizon.net

Assistant Superintendent, Bookstore and Door Prizes

Mike Prokop

njwrr@aol.com

609 586-9818

Director-Contest Chair

Jack Menaker

732 908-6571

jackmenaker@yahoo.com

Rick Stoneking

856 296-9291

stonekingr@comcast.net

Division AP Chair

PJ Mattson, MMR

856 467-0421

pjmattson@comcast.net

Paymaster/Treasurer

Tom Neukirchen

609 584-5184

t.neukirchen@aol.com

Visit us at <https://njdivnmra.org> and join us on
Groups at <https://groups.io/g/NJDivNMRA>

Schedules

Next Division Meet
Saturday January 8, 2022
Grace Episcopal Church
7 East Maple Avenue
Merchantville, NJ 08109

Next Board Meeting
Tuesday February 15, 2022 6:30 p.m.
Host – Mike Prokop
Please let us know if you plan to attend
njdiv.super@gmail.com

March Division Meet
Saturday March 12, 2022
Switlik Park Recreation Building
5 Fisher Place, Hamilton, NJ 08620

Gateway 2022

Marriott Grand, St. Louis
800 Washington Avenue
Saint Louis, MO USA
2022 NMRA National Convention &
National Train Show.

NJ Division Sponsored
2025 Mid-Eastern Region
Convention
HELP WANTED!
Committee Chairpersons; Workers.
Contact John Gallagher
at 856 228-2239 or
njdiv.super@gmail.com

NJ Division Area Hobby Shops

* **AAA Hobbies & Crafts**
706 N. Whitehorse Pike,
Magnolia, NJ 08049
(856) 435-7645
www.AAAHobbiesandCrafts.com

* **Sattler's Hobby Shop**
14 Haddon Ave.
Westmont, NJ 08108
(856) 854-7136

* **The Train Room Online Store**
www.thetrainroomNJ.com
e-mail thetrainroomnj@msn.com

* **Yankee Dabbler - Track 33**
101 W. Kings Hwy, Bellmawr, NJ 08031
yankeedabbler@aol.com

* **Offers discount to NMRA members.**
Must show Current Membership Card

Membership Information

Any person who is a member of the NMRA and lives within the boundaries of the NJ Division as defined by the NMRA is also a member of the division. Non member guests are welcome to attend three of our meets, after which they will be asked to join the NMRA.

NJ Division Annual Activity Fee:
\$10.00 (optional and includes 5 meets) or
individual meets \$5 at the door.

First time guests, no charge!
National Model Railroad Association
P.O. Box 1328 Soddy Daisy TN 37384-1328
www.nmra.org

The 2021 MER Convention Report

By **John Gallagher, Superintendent**

In October, a number of NJD members attended the 2021 **Mount Clare Junction MER Convention** in Hunt Valley, Maryland. The Chesapeake Division of the Mid-Eastern Region hosted the convention.

The convention booklet required attendees to print a copy from their online site and bring it to the event. The programs included MER business meetings plus clinics with a wide variety of interesting topics for model railroaders. Attendees could preregister for clinics and off-site model railroad operating sessions at home layouts.

I attended an operating session on the O scale layout of Kurt Thompson MMR, the MER President. His layout, a work in progress, provided operators with interesting switching challenges. Operating DCC sound equipped diesel locomotives offered the engineer whistle/horn opportunities and bell ringing to warn railroad personnel in a prototypical manner that a movement was underway or about to start. Two crews of two members [engineer and brakeman] operated in two compact yards simultaneously. After about 45 minutes and a break, the crews switched locations and positions. I had fun and learned lessons about my operating skills and the challenges of his layout. We used switch lists.

I attended a number of clinics to learn something new and a convention breakfast for division superintendents. New to this position, I learned from others about their challenges

and approaches to division programs. We have it good in New Jersey; our membership is distributed well geographically. Others are sparsely populated over several hundred miles! President Kurt Thompson plans to hold quarterly superintendents' meetings via ZOOM..

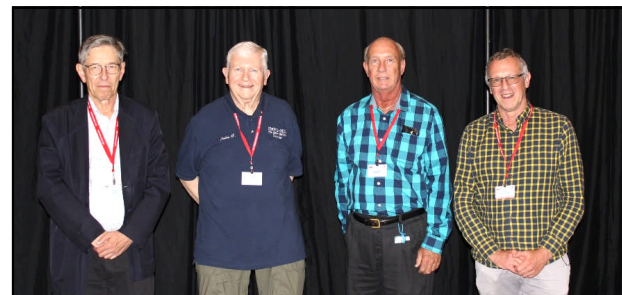
The convention layout room displayed several modular layouts in O scale, HO and N scales. Attendees saw nice modeling of scenery, structures, and operating equipment. Local modelers opened their layouts for visiting conventioners. I unfortunately had GPS problems and could not attend them except when I carpooled with Charlie Long from the Philadelphia Division and visited a fine scale O scale layout [Proto 48] in a house that could serve as a governor's mansion. The layout is completely dead rail DCC [battery power] and a huge maze of walk around track through exquisite scenery. New Jersey Division members Rick Stoneking and Harry Ivory served as judges for the NJD sponsored Bob Liberman Award. They judged contest entries for models of rolling stock and maintenance of way items that excelled in details. They selected a Mack Railbus in HO built by Jerry Lauchle, MMR Susquehanna Division member. The award is a framed certificate and a \$100 gift certificate from the modeler's chosen hobby shop. That model also won other awards.

NJD member Glyn Thomas, MMR, won several contest awards.

Attendees included Joe Weisbrod, Fred Willis, Rick Stoneking, Ralph DeBlasi and spouse, Glyn Thomas, Harry Ivory, me, and some others whose names I didn't record. Former member John Vogler sat at the division banquet table. Friends from the Philadelphia Division who frequently attend our division meets included Kevin Feeney, Eric Dervinis, Joe Desmond and Charlie Long. Unfortunately, a number left the banquet before I could take a group photo. If I missed your name, email me so I can update the list in the next issue of the TRAIN ORDERS.

Finally, I did a lot of observations about the convention and learned lessons that informed me as we plan for the 2025 MER convention to be hosted in New Jersey.

We will be recruiting members, including YOU, to participate in the planning and conducting the event.



Some NJD members at the convention; Fred Willis, John Gallagher, Joe Weisbrod, Glyn Thomas

Model Contest News

By Jack Menaker, Model Contest Chairman

Originally planned for last year was lost due to the Covid issue. In November 2021, we finally had the Boxcar Challenge. There were six dioramas submitted. Unfortunately, one was eliminated due to not meeting the contest requirements. The vote count was spread between three of the entries with the winner (again) being Diamond Bill Howard. Bill will receive a certificate announcing his win (again) and a voucher to cover his yearly refreshment fee at the upcoming five meets.



Junk, Junk & More Junk, by Bill Howard

Additional contest pictures are on page 5

For January, the contest will be **HOW CAN YOU SHOW YOUR RAILROAD TO A POSSIBLE INVESTOR?**

Pretend you are the President & CEO of a small local railroad named “**MY RAILROAD INC.**” and have someone who wants to invest in a railroad, and he is visiting various small lines. This is prior to making a decision in which railroad to invest his funds.

The contest is How would you transport the investor around “**MY RAILROAD**”

Pretend you (the railroad CEO) have someone who wants to invest in a railroad, and is visiting various small railroads. This is prior to making a decision and investing in the most promising railroad visited.

GENERAL NOTICE To all employees of MY RAILROAD INC.

On or about January 8, 2022, we will be hosting the visit of J.J. Deep Pockets to take a tour of our company assets, including all Trackwork, all buildings and all company motive power.

All Employees must be dressed in clean clothing. The facilities must be cleaned prior to the visit and motive power must be touched up and washed.

Please be on your best behavior. To continue and expand the operations of My Railroad Inc. we need the influx of investments.

John Q. Operator, President & CEO

How would you tour the railroad with that individual? Take him for a cab ride in a clean engine? How about an observation car pulled by a clean diesel engine. Maybe a Railbus? Maybe a Doodlebug? An inspection car or a theater car would be nice. How about a limousine with a built-in bar?

For the contest, please provide a model of what you would use to show off your railroad to a potential investor

Upcoming Contests

In the past two years, we have asked for a few different new topics for the NJ Division Contest. Some requested topics have been, a water feature, a diorama, a favorite train, photo (model & actual), specific passenger cars, specific freight cars, favorite engine, railroad structures, industrial structures, kitbashed structures etc.

We are always looking for new and/or favorite topics for the contest.

Feel free to contact me online at jackmenaker@yahoo.com to suggest what you would like to see and/or present at a NMRA Meet contest.

And don't forget, a Golden Spike Award is a certificate from the NMRA acknowledging that you are someone who is a Model Railroader rather than a train watcher. You can contact me as above for the requirements or to schedule an evaluation.



Herb Gishlik, M&U RR Junction



Mike Prokop, Godzilla



Gerald Michael, Monument



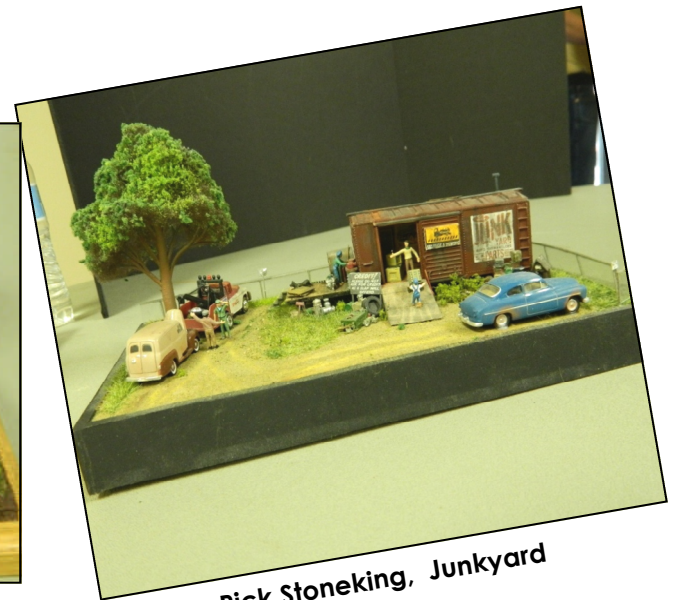
Jack Menaker, Grandma's Soup



Lehigh Valley 50' Boxcar, by Anthony Zascione



Rick Stoneking, Junkyard



Convention continued from Page 3



Glyn Thomas MMR won two contest awards; The RAY Bilodeau Narrow Gauge Award and a First Place Award for a Off Line Structure



Jerry Lauchle receiving the Liberman Award for his model "Mack Railbus"



Text & Photos John Gallagher

The Stay Alive Circuit

John V. Gallagher

At the Works in Progress program in November, I presented one short clinic on several topics. One that I developed was a display showing a homemade "stay alive circuit." Many modelers who operate with DCC experience motive power stalling on turnouts and areas where the track is dirty. It leads to sound units shutting down and then having to go through the engine start sequence. With stay alive, powered by super capacitors, the motive power continues at the assigned speed setting when there is a track-caused interruption of power. The decoder draws from the "stay alive" capacitors bridging the bad track for a short distance when the engine regains track power.

The circuit I use has five "super capacitors" wired in **series**. The capacitor has polarity: a plus wire [+] and a minus wire [-]. So, you wire the capacitors together noting which end is the minus of the circuit and which end is the positive. First, you solder a wire to the minus [-] wire of the first capacitor [C 1]. You solder the positive [+] wire of capacitor [C 1] to the negative [-] wire of capacitor [C 2]. You repeat those steps until the last capacitor [C 5] is connected. Solder a wire of several inches to the positive [+] wire of capacitor [C 5].

You create a parallel circuit wire from the minus [-] end to the positive end. On that wire, you make a connection from the positive [+] end near capacitor [C 5] to the parallel circuit

wire. The wire from the end of the series connections of the capacitors should extend several inches. The parallel wire circuit should be the same length.

To review, you have a series circuit starting with a wire soldered to the first capacitor at the negative [-] end, then you solder the five capacitors plus [+] to minus [-] until only the plus [+] connection of the last capacitor is then soldered to a wire of several inches. To the negative wire near the first capacitor, you soldered a wire that becomes a parallel circuit that is the same length as the wire at the positive [+] end of the wire from the capacitors. You solder the parallel wire to the capacitor wire near its positive end.

You solder a bridge connection wire connecting the positive wire near capacitor [C 5]'s positive [+] connection to the parallel circuit wire. It is much like a crossover track between two parallel tracks.

Please do not overheat the soldered connections to the capacitors. Use good techniques of clean wire, a small amount of flux. Tin each end of the connection. Then, holding the wires together, solder them together. Good technique leads to successful electronics fabrication.

Now, you must add three components to the circuit.

A resistor, [R 1] is soldered to the positive wire between the bridge wire and the positive

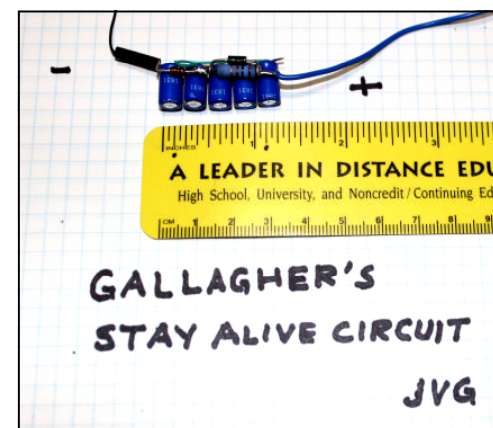
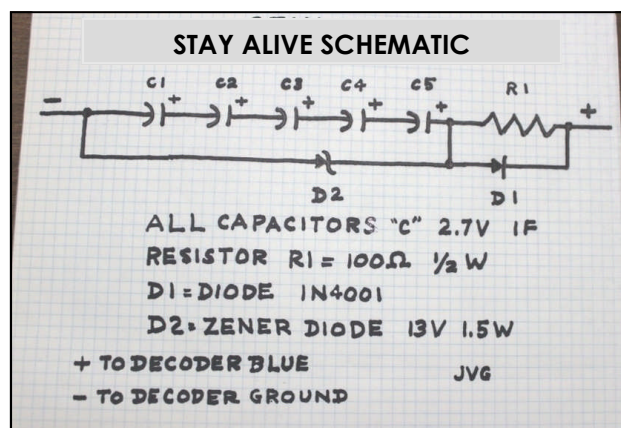
wire end. The end of the resistor is not important. It can be in any direction. Be sure to cut the wire in the middle so you have adequate space to remove insulation and make the soldered joints.

A diode [D 1] is soldered between the positive end of the circuit into the parallel circuit's wire between the positive end and the bridge wire connection. Here, the diode must be in the proper position, Diodes are marked with a band signifying its polarity. The band on the diode is the end that faces in the direction of the arrowhead in the diagram. Be sure to use a heat sink [an alligator clip or other] on the **diode** wire when soldering so you do not destroy the diode. Do this on each side of the diode.

A special diode [D 2 Zener] is soldered into the parallel wire between the bridge connector and the connection at the negative [-] end of the circuit. Again, use the same procedures to protect this diode from the heat of the soldering process. The Zener diode performs a switching function that eliminates a false short circuit when you first turn on your DCC.

The positive end of your keep alive should be a blue wire and it is connected to the positive on your decoder. The negative end should be a black wire, connected to the negative in your decoder. Many new decoders now have connections for a keep-alive circuit.

Your keep alive does not have to have five capacitors. In HO, with smaller motors, three may provide sufficient power. Experiment. What works well with your engines and railroad?



BILL OF MATERIAL

Super capacitors: Mouser Electronics www.order@mouser.com

Mouser #: 581-SCCQ12E105SRB

Manufacturers Part Number: SCCQ12E105SRB, 3V 1F ESR=240mOhm

Price at 20 quantities ~ \$1.50 each

Zener Diode 15V 1 Watt Price at 20 quantities 20 cents each : All Electronics

Diode 1N4001 All Electronics

Resistor 100 Ohm 1 Watt SEI RS-1 1W 1 Watt Metal Oxide Film Resistor
 FLAMEPROOF 15% Tolerance



**Clinic Presenters for the
 WORKS IN PROGRESS
 presentations for the
 November 2021 Meet.**

**L to R Bill Kennedy; Mike
 Prokop; JVG; Dave
 Albertson; Pete Suhmann;
 Herb Gishlick**

New Jersey Division 50th Anniversary Gondola

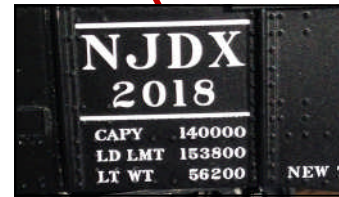
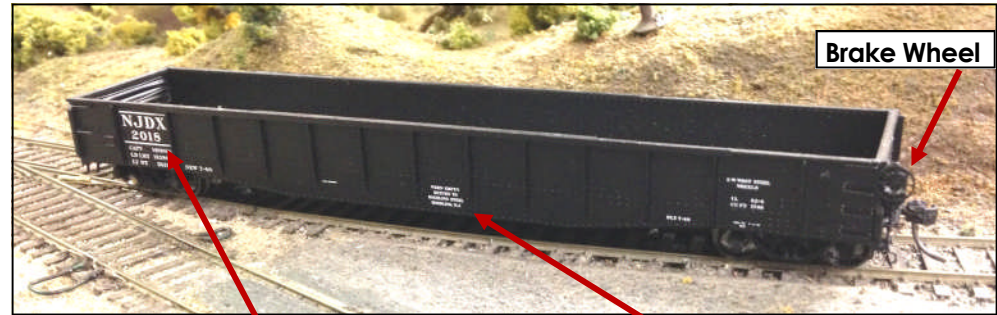
75th Anniversary Gondola

A review of the cars. They are \$35 each, or a set of two for \$65. Car numbers are 1968 and 2018, which was the year that the New Jersey Division was founded and the year we celebrated our 50th anniversary. The model is from Tangent Models and is a superb model of a 52'6" Riveted Drop End Gondola with 70 ton trucks. The placement of the brake wheel on the side is an identifying feature of a drop end Gondola. They're ready to run and come with Kadee couplers.

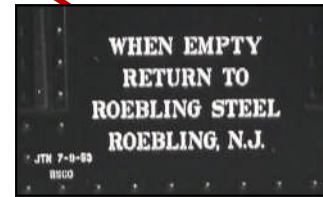
We acquired equal amounts of the two car numbers. Cash or check will consummate the deal and you'll be hauling stuff around your layout in no time!

These are excellent looking and beautifully running cars, but, a car not decorated for a prototypical railroad, they do have the look of a gondola that you might see in any train consist from the 1930's to the 1980's.

To order Contact Rick Stoneking at stonekingr@comcast.net or by mail use the Order Sheet. USPS Priority Mail postage is: \$9 for one car and \$10.75 for two cars.



The Reporting Marks "NJD" for this car identify the owner as the New Jersey Division and the "X" designates a Private or Non-railroad owner.



This Stencil indicates the Gondola is in Assigned Service to Roebling Steel. It must be returned to Roebling after its load has been delivered.

The car body is black with white lettering and data conforming to the 1950s

The cost is \$35.00 for one car or a set of both numbers for \$65.00

A check made payable to the NJ Division must be included with your order.

Name _____
 Address _____
 City _____ State _____ Zip Code _____
 Telephone _____

See Tangent website for more information support
 @tangentscalemodels.com
 Return this form to NJ Division NMRA;
 PO Box 276, Crosswicks, NJ 08515-0276

Second Section

Layouts open for viewing for the January Meet

For the January meet we have five layouts to visit.

Maps listing them along with directions and the time they will be open are available at the meet.

Please contact a Board member if you would like to host an open house for your railroad when we are close to your area.

But if we are missing your area completely, please let us know so we can visit your layout.



The Delaware & Allegheny RR is a Class One carrier between the New York area and Pittsburgh, PA., with westward connections there as well as serving the area steel mills.

ALSO OPEN

The Rancocas Valley lines club is made up of NMRA members located in the basement of the Footlighters' playhouse.

Cherry Valley Model Railroad O scale layout
 In the basement of the Grace Episcopal Church



Newton Creek Railroad is an HO and HOn3 located in Colorado with lumbering. It is also DCC



The Oak Valley HO Railroad is set in Eastern PA at the time of steam to diesel transition. The layout is 100 percent scenicked and detailed. PRR interchanges with the Reading and Lehigh Valley are on this layout.

Do You Remember, Bachmann HO?

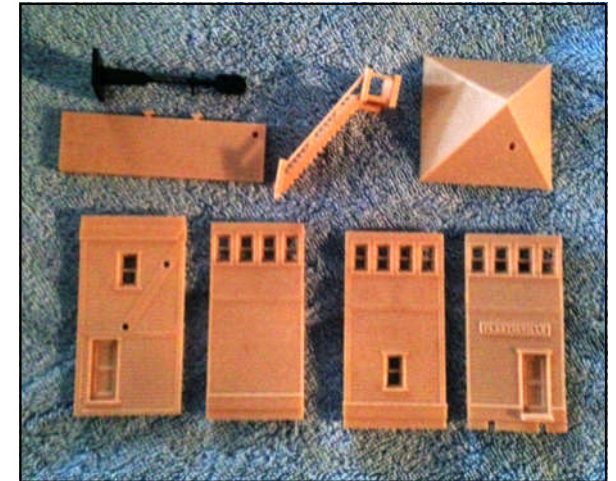
By Fritz Plenefisch

Plasticville was a product of Bachmann Brothers of Philadelphia, Pa. Many of us remember the Plasticville buildings we had on our Lionel, American Flyer or Marx trains during the Christmas Season.

This HO Gauge kit labeled as a "MAKE AND PLAY SET" consisted of parts to make five structures. The parts were cast in a neutral color with the standard SNAP-Fit assembly that was easily painted. A pack of color pellets along with a palate and 2 bottles of Styrene paint fluid for mixing the paint were included. This liquid could also be used to glue the parts together.



The box cover showing all the buildings in the kit. All for \$4.98 or \$3.59 at a discount Store.



signal tower parts



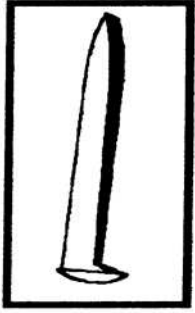
This was a 4 page insert inside the that listed most of the HO items available at that time.



This view shows all the parts and the paint pallet with the paint pellets.



The paint kit had 14 color pellets, a brush and 2 bottles of Styrene painting fluid and glue.



ACHIEVEMENT PROGRAM GOLDEN SPIKE AWARD APPLICATION FORM

PLEASE COMPLETE THIS APPLICATION FORM AND SEND TO YOUR REGIONAL OR DIVISIONAL AP CHAIR

Member's Name _____ NMRA#: _____ EXP: _____

Address: _____ City: _____

State/Prov: _____ Country: _____ Postal Code: _____

Date Submitted: _____ Region: _____

The Golden Spike Award will be awarded to any NMRA member who has completed the Qualifications Checklist, obtained the necessary signatures and who does not hold MMR status. It will be administered by the regional and divisional AP Chairs. AP regulations and definitions apply for scratchbuilding and superdetailing. To qualify for the award the member must complete the following checklist, obtain the signature of the divisional AP Chair or another NMRA member designated by the divisional Chair. The divisional Chair will submit the signed form to the regional AP Chair who will issue the Golden Spike Award certificate.

QUALIFICATIONS CHECKLIST:

1. Rolling Stock (Motive Power & Cars):

Display six units of rolling stock either scratchbuilt, craftsman kits or super-detailed commercial kits.

2. Model Railroad Setting (Structures & Scenery)

- Construct a minimum of eight square feet of layout including scenery.
- Construct five structures either scratchbuilt, craftsman kits or superdetailed commercial kits. If a module has less than five structures, additional structures separate from the scene may be presented.

3. Engineering (Civil & Electrical)

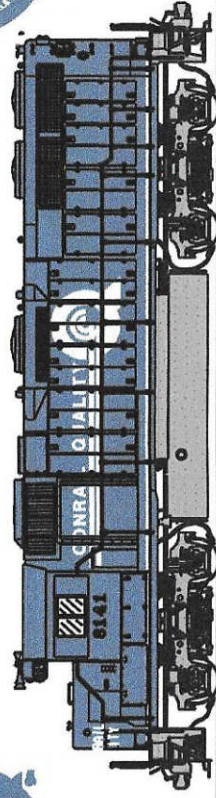
- Three types of trackage required (e.g. turnout, crossing, crossover, etc.). All must be properly ballasted and installed on proper roadbed. Commercial trackage may be used.
- All installed trackage must be properly wired so that two trains can be operated simultaneously (e.g. double track main, single track main with sidings, and block or command control).
- Provide one additional electrical feature such as power operated turnouts, signaling, turnout indication, lighted buildings, etc.

Witness: _____ Name: _____ NMRA #: _____

Regional AP Chair: _____ Region: _____



2022



JANUARY

| | | | | | | |
|----|----|----|----|----|----------|----|
| S | M | T | W | T | F | S |
| | | | | | 1 | |
| 2 | 3 | 4 | 5 | 6 | 7 | 8 |
| 9 | 10 | 11 | 12 | 13 | 14 | 15 |
| 16 | 17 | 18 | 19 | 20 | 21 | 22 |
| 23 | 24 | 25 | 26 | 27 | 28 | 29 |

30 31

FEBRUARY

| | | | | | | |
|----|----|----|----|----|----|----|
| S | M | T | W | T | F | S |
| | 1 | 2 | 3 | 4 | 5 | |
| 6 | 7 | 8 | 9 | 10 | 11 | 12 |
| 13 | 14 | 15 | 16 | 17 | 18 | 19 |
| 20 | 21 | 22 | 23 | 24 | 25 | 26 |
| 27 | 28 | | | | | |

MAY

| | | | | | | |
|----|----|----|----|----|----|----|
| S | M | T | W | T | F | S |
| 1 | 2 | 3 | 4 | 5 | 6 | 7 |
| 8 | 9 | 10 | 11 | 12 | 13 | 14 |
| 15 | 16 | 17 | 18 | 19 | 20 | 21 |
| 22 | 23 | 24 | 25 | 26 | 27 | 28 |
| 29 | 30 | 31 | | | | |

SEPTEMBER

| | | | | | | |
|----|----|----|----|----|----|----|
| S | M | T | W | T | F | S |
| | | | | | 1 | 2 |
| 3 | 4 | 5 | 6 | 7 | 8 | 9 |
| 10 | 11 | 12 | 13 | 14 | 15 | 16 |
| 17 | 18 | 19 | 20 | 21 | 22 | 23 |
| 24 | 25 | 26 | 27 | 28 | 29 | 30 |

JUNE

| | | | | | | |
|----|----|----|----|----|----|----|
| S | M | T | W | T | F | S |
| | 1 | 2 | 3 | 4 | | |
| 5 | 6 | 7 | 8 | 9 | 10 | 11 |
| 12 | 13 | 14 | 15 | 16 | 17 | 18 |
| 19 | 20 | 21 | 22 | 23 | 24 | 25 |
| 26 | 27 | 28 | 29 | 30 | | |

OCTOBER

| | | | | | | |
|----|----|----|----|----|----|----|
| S | M | T | W | T | F | S |
| | | | | | | 1 |
| 2 | 3 | 4 | 5 | 6 | 7 | 8 |
| 9 | 10 | 11 | 12 | 13 | 14 | 15 |
| 16 | 17 | 18 | 19 | 20 | 21 | 22 |
| 23 | 24 | 25 | 26 | 27 | 28 | 29 |
| 30 | 31 | | | | | |

MARCH

| | | | | | | |
|----|----|----|----|----|----|----|
| S | M | T | W | T | F | S |
| | 1 | 2 | 3 | 4 | 5 | |
| 6 | 7 | 8 | 9 | 10 | 11 | 12 |
| 13 | 14 | 15 | 16 | 17 | 18 | 19 |
| 20 | 21 | 22 | 23 | 24 | 25 | 26 |
| 27 | 28 | 29 | 30 | 31 | | |

JULY

| | | | | | | |
|----|----|----|----|----|----|----|
| S | M | T | W | T | F | S |
| | | | | | 1 | 2 |
| 3 | 4 | 5 | 6 | 7 | 8 | 9 |
| 10 | 11 | 12 | 13 | 14 | 15 | 16 |
| 17 | 18 | 19 | 20 | 21 | 22 | 23 |
| 24 | 25 | 26 | 27 | 28 | 29 | 30 |
| 31 | | | | | | |

NOVEMBER

| | | | | | | |
|----|----|----|----|----|----|----|
| S | M | T | W | T | F | S |
| | | | | | 1 | 2 |
| 3 | 4 | 5 | 6 | 7 | 8 | 9 |
| 10 | 11 | 12 | 13 | 14 | 15 | 16 |
| 17 | 18 | 19 | 20 | 21 | 22 | 23 |
| 24 | 25 | 26 | 27 | 28 | 29 | 30 |
| 31 | | | | | | |

APRIL

| | | | | | | |
|----|----|----|----|----|----|----|
| S | M | T | W | T | F | S |
| | | | | | 1 | 2 |
| 3 | 4 | 5 | 6 | 7 | 8 | 9 |
| 10 | 11 | 12 | 13 | 14 | 15 | 16 |
| 17 | 18 | 19 | 20 | 21 | 22 | 23 |
| 24 | 25 | 26 | 27 | 28 | 29 | 30 |

AUGUST

| | | | | | | |
|----|----|----|----|----|----|----|
| S | M | T | W | T | F | S |
| | 1 | 2 | 3 | 4 | 5 | 6 |
| 7 | 8 | 9 | 10 | 11 | 12 | 13 |
| 14 | 15 | 16 | 17 | 18 | 19 | 20 |
| 21 | 22 | 23 | 24 | 25 | 26 | 27 |
| 28 | 29 | 30 | 31 | | | |

DECEMBER

| | | | | | | |
|----|----|----|----|----|----|----|
| S | M | T | W | T | F | S |
| | | | | | 1 | 2 |
| 3 | 4 | 5 | 6 | 7 | 8 | 9 |
| 10 | 11 | 12 | 13 | 14 | 15 | 16 |
| 17 | 18 | 19 | 20 | 21 | 22 | 23 |
| 24 | 25 | 26 | 27 | 28 | 29 | 30 |
| 31 | | | | | | |