

Train Orders

Official Newsletter of the New Jersey Division,
Mid-Eastern Region, National Model Railroad Association



March 2023

Volume 34 Number 2

Its Works in Progress at Switlik Park in Yardville

John V. Gallagher, Superintendent

We return to Switlik Park for our annual Works in Progress [WIP] format of multiple simultaneous clinics. We recruited clinicians to present 30-minute clinics up close and personal to up to 10 members at each table. Each clinic will be repeated so members have four opportunities to attend a clinic topic should there be more than 10 attendees at a clinic table. Bring a notebook and pen to copy notes so you have a record of the topic for use at home. You can photograph items of interest with your phone.

Our meet will include the regular events of a short business meeting for updating members about division events and activities, two 30 minute WIP sessions, a break period for coffee and donuts, socialization, voting for the contest, shopping at the division bookstore, scanning the door prize goods, the raffle table, taking some items from the last chance table, and shopping at any vendor tables. We return to the third and fourth WIP sessions. We then celebrate the accomplishments of members in the AP program and today's clinicians, the contest winner, meet new members and visitors, and get briefed on the layouts open for the afternoon.

Masks are optional. We suggest that you have one in your car should there be a spike in cases at the meet time and for wearing at layout homes should the owner request masking to protect vulnerable family members. Thanks for your cooperation.

Reminder: We need CLINIC PRESENTERS for future meets. Please sign up on the clinics clipboard for a presentation at a future meet. Clinics earn AP credit for the Author certificate. We need your help and your knowledge and modeling skills to improve our own modeling and hobby involvement. Thanks.



January Contest - Small Dioramas
Winner is Mike Prokop

Next Division Meet

Saturday March 11, 2023

9 a.m. to 12:00 noon

Switlik Park Recreation Building

5 Fisher Place, Hamilton, NJ

08620

Model Display News:

Railroadian

Clinics:

There will be seven 30 minute
Clinics presented four times.

(See Page 6 for Details)

Table reservations:

Contact the Superintendent by

In This Issue

January Meet	1
NJD Information Page	2
View From The Cab	3
Model Display News	4
Celebration	5
March Clinics	6
Special NJD Meet	6
Reconstruction-Part 1	7
50th Anniversary-Gondola	8
Open Layouts	9
Less Than Carload	10
Golden Spike Appl. Form	12

Train Orders

Official Newsletter of the New Jersey Division. NMRA
P.O. Box 276

Crosswicks, NJ 08515-0276

<https://njdivnmra.org>

Train Orders is published 5 times per year for the NMRA members and friends of the New Jersey Division. Online newsletter is always available at NJ Division website. Mailed hardcopy newsletter is \$15.00 per year. The opinions expressed do not necessarily reflect those of the Division. Products and publications mentioned in Train Orders in no way constitute an endorsement by the Division.

Contributing to Train Orders

Train Orders welcomes contributions from the New Jersey Division membership. Letters, articles, photos and other items may be submitted to the editor, Fritz Plenefisch, at fplen3@verizon.net or to 327 Sharps Lane, Hamilton, NJ 08610-1334. Please include return postage if you would like materials returned.

Deadline for material for the May Train Orders is April 15, 2023

Superintendent and Director of Clinics

John Gallagher
njdiv.super@gmail.com
856 228-2239

Clerk/Secretary

Joe Zebrowski
609 268-9451
trackjack@comcast.net

Director- Membership

Geert Marien
732 757-1061
geert@mindspring.com

Director-Editor

Fritz Plenefisch
609 585-7660
fplen3@verizon.net

Paymaster/Treasurer

Tom Neukirchen
609 584-5184

Assistant Superintendent, Bookstore and Door Prizes

Mike Prokop
njwrr@aol.com
609 610-2687

Director-Contest Chair

Jack Menaker
732 908-6571
jackmenaker@yahoo.com

Director

Thom Radice
732-713-5649
thomradice@gmail.com

Division AP Chair

PJ Mattson, MMR
856 467-0421
pjmattson129@gmail.com

Visit us at <https://njdivnmra.org> and join us on
Groups at <https://groups.io/g/NJDivNMRA>

NJD Information Page

March Division Meet
Saturday March 11, 2023
Switlik Park Recreation Building
5 Fisher Place, Hamilton, NJ 08620

Next Board Meeting

April 27, 2023

Host – Thom Radice

Please let us know if you plan to attend
njdiv.super@gmail.com

May Division Meet
Saturday, May 13, 2023 the
Hillsborough Municipal Building.
Hillsborough , NJ

NJ Division Sponsored 2025 Mid-Eastern Region Convention HELP WANTED!

Committee Chairpersons; Workers.
Contact John Gallagher
at 856 228-2239 or
njdiv.super@gmail.com

One hotel has been contacted so far, which appears to meet all the MER requirements. The hotel manager is to get back to us regarding pricing and some small facility details. The board members need to think about a theme and purpose for the convention, and objectives to entice MER members to attend. The specific dates will be the second or third week in October, 2025 for a Thursday thru Sunday convention. Joe Zebrowski, Thom Radice and Mike Prokop will be checking out additional possible hotels which would be able to meet the MER's various criteria.

NJ Division Area Hobby Shops

* **AAA Hobbies & Crafts**
706 N. Whitehorse Pike,
Magnolia, NJ 08049
(856) 435-7645
www.AAAHobbiesandCrafts.com

* **Sattler's Hobby Shop**
14 Haddon Ave.
Westmont, NJ 08108
(856) 854-7136

* **The Train Room Online Store**
www.thetrainroomNJ.com
e-mail thetrainroomnj@msn.com

* **Yankee Dabbler - Track 33**
101 W. Kings Hwy, Bellmawr, NJ
08031

* Offers discount to NMRA members.
Must show Current Membership Card

Membership Information

Any person who is a member of the NMRA and lives within the boundaries of the NJ Division as defined by the NMRA is also a member of the division. Non member guests are welcome to attend three of our meets, after which they will be asked to join the NMRA.

NJ Division Annual Activity Fee:
\$10.00 (optional and includes 5 meets)
or individual meets \$5 at the door.

First time guests, no charge!

**National Model Railroad
Association P.O. Box 1328
Soddy Daisy TN 37384-1328**

View From The Cab

John V. Gallagher, Superintendent

COVID affected the in-person attendance of our division meets. We went from completely virtual meets via Zoom during the height of the pandemic to hybrid meets where it was safer to meet in person with masking, social distancing, and other safe practices for members in good health. For those who considered in-person attendance involved health related risks could still attend via Zoom broadcast at home. The board discussed whether to continue the hybrid meets when it became safe for a return to only in-person meets and decided to end Zoom broadcasts. Our pre COVID attendance at meets varied between 75 to 100 depending on venue/location. Post COVID attendance of members now runs about 40. We will analyze the attendance sheets by name to determine if there are patterns. If you haven't attended a meet in-person since the "end" of COVID, consider coming to one in the near future. We miss you!

The upcoming meet at Switlik Park will become our standard March meet location for the future. In May, we traditionally have a joint meet with our friends in the Garden State Division [GSD]. Currently GSD, is the host this year. The meet date is Saturday, May 13, 2023 at the Hillsborough Municipal Building. Hillsborough is west of New Brunswick, conveniently south in the GSD and not far from our division's northern border in Mercer and Monmouth Counties. See the May issue of

Train Orders for meet details. Mark your calendar, a special all day meet on August 5, 2023 will be held at Switlik Park. Activities for the day are still in the planning stage. Stay tuned! We will announce the meets for September and November during the summer.

The NMRA generally notifies you of your membership expiration date by sending renewal paperwork with an envelope several months earlier. I suggest you renew early.

Director Geert Marien reviews the membership rosters and contacts those who missed renewing for the next year or with a membership expiring at the end of the month. We are supposed to receive a monthly report of members, but frequently do not get them from national or the region in a timely manner. I am working with the region to send us timely roster information.

I recently submitted an annual report to the Mid-Eastern Region [MER] including our list of members completing various AP's. We congratulate the nine members who earned various AP's in eight categories during 2022. In addition, two members earned Golden Spike awards. Bob Price and Chris Conaway became Master Model Railroaders. Congratulations to all. Our division now has eight Master Model Railroaders! I encourage you to continue working on your AP's and if not, consider earning the Golden Spike. To get started. Contact PJ Mattson, Bob Price, Mike Prokop

or Jack Menaker who can mentor you to get started or have your work judged. Thanks to other members who qualified to judge AP's.

Board members serve two-year terms as the divisions Directors. Four are up for reelection this August: Mike Prokop, Tom Neukirchen, Jack Menaker and John Gallagher. If you want to serve as a director, submit a petition to be put on the ballot. We will publish the ballot in the future. Now is the time to consider running for office. Members are welcome to attend the Board Of Directors meetings, see page 2 for meeting time and location.

I recently found [Yes, I am a little late!] a web site with weekly modeling discussions on Wednesday evenings at 7p.m. to around 9p.m. on YouTube or Zoom. It's titled "New Tracks Modeling" subscribe at newtracksmodeling.com to get weekly notices of the broadcast and the Zoom link. Past broadcasts are on YouTube.

Recently, you should have received a Dispatch introducing the "NMRA Interchange." NMRA Interchange. Consider registering your current email address with the NMRA. As an active member, you should receive occasional emails: e Bulletin, Turntable, and Dispatch. Read them to keep informed about your NMRA. Be sure to print it out and study it. The Interchange is a communications program for NMRA members. I am getting acquainted with the concept and feel it will serve us well. There will be a learning curve.



Model Display News

By Jack Menaker, Model Display Chairman

Welcome to the former Contest News page.

Starting with the March Train Orders, I am making a change from a Contest to a Display.

After a several years of running the contests, I was not thrilled with having to name a Winner. I believe that many of us are Winners. Anyone participating in the former "Contest" should be considered a winner for showing us some of their talents and their favorites.

There will be a form to fill out to help identify your entry. (More about this later.) Thus during every Meet, we will have a display and the Best on Display will receive a certificate and a voucher for the yearly activity fee.

The "Winner" of January's contest, was Mike Prokop with his model of an elevated rail line with a train traveling over an animated scene of another train that had sound.

The first Display to be shown in March will be for any member to show us a piece of real **RAILROADIANA**.

The only rules are that the piece shown should be;

The piece has to be identified from a railroad.

The piece should be authentic.

The piece should be large enough to show off, but small enough to easily carry.

The piece should have been acquired legally, not borrowed, or stolen.

Regarding the form, the paper will help identify how the display was produced.

Some of the questions on the form will be;

Is the piece shown scratch built?

Is the piece Kit Bashed? If so, what kits were used?

Is the piece shown custom painted and lettered?

Does the piece have extra detail added? What has been added?

**REMEMBER, WE ARE ALWAYS LOOKING FOR NEW TOPICS
 FOR DISPLAY AT THE MEETS, YOUR SUGGESTIONS WOULD BE GREAT!**

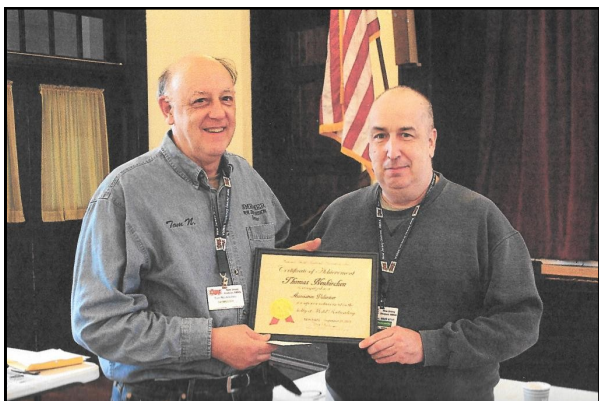
Jack Menaker



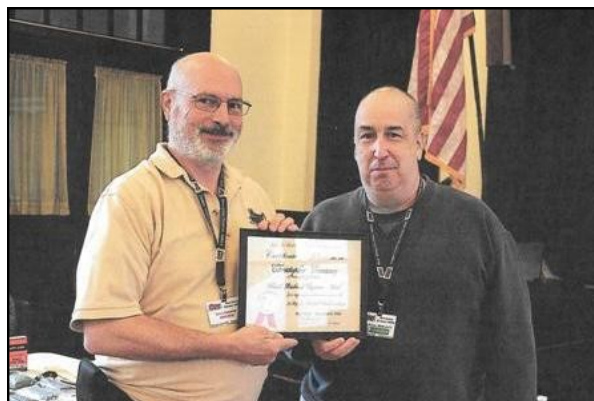
Mike Prokop Photo

Celebration

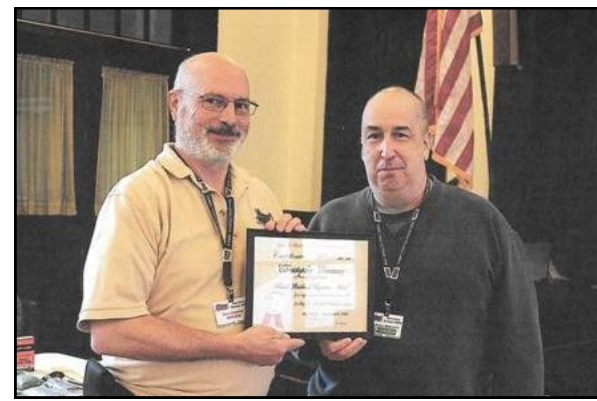
John V. Gallagher, Superintendent



Bob Price, MMR, presented Tom Neukirchen, left, his Association Volunteer AP certificate.



Bob Price, MMR, presented Chris Conaway, left, with his final AP certificate Model Railroad Engineer - Civil.



Bob Price, MMR, presented Chris Conaway, left, with his Master Model Railroader Certificate, #724! CONGRATULATIONS!



John Gallagher presented Joe Weisbrod, left, with the Contest Award Certificate for his Industrial Building Photo.



Philadelphia Div member Jeff Witt, center, received a Clinic Certificate for his clinic on John Allen's Publications.



Philadelphia Superintendent Joe Walthers, left, and NJ Div Superintendent John Gallagher, right presented the Clinic Certificate to NJ Div member Mike Prokop, center, for his clinic on Coal Loads.

Clinics for March Will Be Works in Progress

John V. Gallagher, Director of Clinics

In most meets, we select two clinic topics to present by members or guest presenters. While we try to select clinics that most members will find useful, entertaining, or of interest to their modeling or knowledge of railroading, not all will meet the preferences of all in attendance.

Years ago, I stole the idea from the prototype modelers plus the practices of many professional organization conventions, to provide a selection of clinic topics simultaneously. Each clinician will present a clinic four times, 30 minutes duration, so attending members would be

able to select and attend four topics of their choice. We run the meet clinics sessions much like what you experienced in high school with a bell starting the first session, ending 30 minutes later with another bell. Attendees then have time to change clinics where the second session begins with the bell. There will be a “recess.” Break time for coffee, donuts, shopping, rest room... After break, a bell will announce the third selected clinic following the above process, ending with the fourth clinic. We suggest that no more than 10 gather at each table per session.



Bring a notebook and your phone camera to take notes and photos for your use.

Presenter	Topic
Mike Prokop	Improving Atlas Turnouts – Part Two
Barry Rosier	Cardstock Modeling Detail Tricks
Gerry Michael	How to Design Octagonal Roofs
Glyn Thomas, MMR	Airbrushing
Rick Spano	Unusual Tools for Modeling
Jim Shepard	Vignettes and Trees [Garden RR’s]
John Gallagher	Bits ‘n Pieces – hands on

Special August New Jersey Division Meet

On Saturday August 5th, the New Jersey Division will be holding a special meet at the Hamilton, NJ Switlik Park facility from 9am till 5pm. We are looking for your input and ideas on some things we can do that day to make it a great and memorable event. Please forward your thoughts and suggestions to any board member but you can specifically email Mike Prokop at NJWRR@AOL.COM. Mike and the BOD and hopefully some welcomed volunteers, will be putting together the program after the March Division meet in Hamilton and presenting the program at the May joint meet with the Garden State Division. So, mark your calendars and get prepared for a nice summer get together with all your train friends.



Railroad Reconstruction-Part 1

by Mike Prokop

If you've read the previous issue of Train Orders, you'll know that I'm changing my model railroad and changing scales. Yes, I'm definitely going ahead with my plans to transform my HO New Jersey and Western railroad into an On30 narrow gauge railroad named the Hill Valley. Demolition day has come and so far, has turned into demo month plus. Besides the physical work, the more demanding job is figuring out what to salvage for use on the new railroad including

benchwork materials, wiring and cabling, electronics, some scenery items, the DCC system and so on. Once these issues are determined it's been easy, although physically demanding, in separating out the good stuff to keep and what junk goes to the curb. As designed the On30 layout has a smaller footprint and a majority of the benchwork materials will be sufficient to construct the new layout. The big challenge is finding the room to take deconstructed lumber and

materials and keeping it available for the new build. Right now, as I write this my train room is a big mess! Watch your step! But there's a light at the end of the tunnel. I'm about to start reconstruction of the new benchwork, not the completely new footprint, but at least one section. Getting this done gives me the opportunity to "pile junk" on the new part to clear up space to work on adjacent areas. I've included a few photos of the mayhem to let you see some of what I'm dealing with.

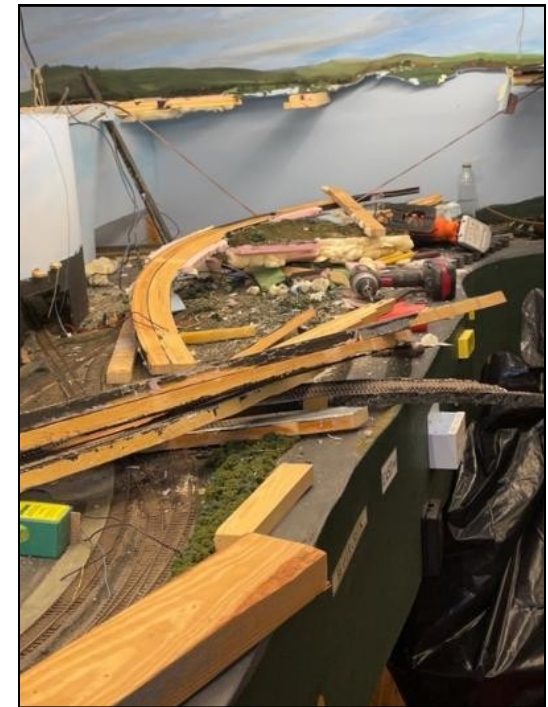


Left Photo

Debris has rained down on the Raritan Industrial area of the layout from Crosswicks Yard which served as the interchange between the NJ&W and the Reading Railroad. Lots of debris to clean up, but using various types of foam products to construct the railroad and complete scenery made for lightweight bags of trash.

Right Photo

This is the Beaver Creek area of the layout. The NJ&W interchanged with the New York & Susquehanna here in Beaver Creek Yard. Most of the debris seen is from removal of the upper deck which was part of North Point Yard. As I demolished a section of railroad, I kept on top of cleaning and salvaging the area and items to keep ahead of having too big of a mess on my hands.



New Jersey Division 50th Anniversary Gondola

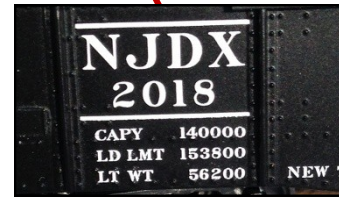
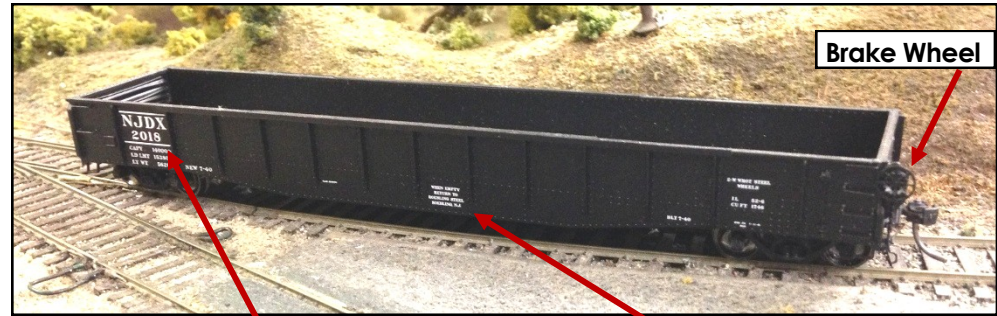
75th Anniversary Gondola

A review of the cars. They are \$35 each, or a set of two for \$65. Car numbers are 1968 and 2018, which was the year that the New Jersey Division was founded and the year we celebrated our 50th anniversary. The model is from Tangent Models and is a superb model of a 52'6" Riveted Drop End Gondola with 70 ton trucks. The placement of the brake wheel on the side is an identifying feature of a drop end Gondola. They're ready to run and come with Kadee couplers.

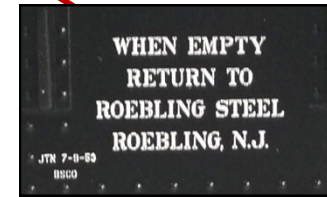
We acquired equal amounts of the two car numbers. Cash or check will consummate the deal and you'll be hauling stuff around your layout in no time!

These are excellent looking and beautifully running cars, but, a car not decorated for a prototypical railroad, they do have the look of a gondola that you might see in any train consist from the 1930's to the 1980's.

To order cars Contact Mike Prokop at njwrr@aol.com or by mail use the Order Sheet. USPS Priority Mail postage is: \$9 for one car and \$10.75 for two cars.



The Reporting Marks "NJD X" for this car Identify the owner as the New Jersey Division and the "X" designates a Private or Non-railroad owner.



This Stencil indicates the Gondola is in Assigned Service to Roebling Steel. It must be returned to Roebling after its load has been delivered.

The car body is black with white lettering and data conforming to the 1950s

The cost is \$35.00 for one car or a set of both numbers for \$65.00

A check made payable to the NJ Division must be included with your order.

Name _____
 Address _____
 City _____ State _____ Zip Code _____
 Telephone _____

See Tangent website for more information
 support@tangentscalemodels.com
 Return this form to NJ Division NMRA;
 PO Box 276, Crosswicks, NJ 08515-0276

Second Section

Layouts open for viewing for the January Meet

For March we have seven layouts to visit at the time this TO is issued.

Maps listing them along with directions and the time they will be open are available at the meet.

Please contact a Board member if you would like to host an open house for your railroad when we are close to your area.



The "Scenicked and Undecided Railway" is a large N Scale layout based on the Pacific Northwest in the US and British Columbia, running CP Rail, CN, BC Rail, BN and UP. The layout features mountain, rural, city and industrial scenery with many animated cranes, excavators, coal mines and rotary dumpers, along with a large steel mill, live coal loads and fireworks.



The layout design is a double track folded dogbone with a center island. It's era is the late 1950's central Pennsylvania and is shared by the Pennsy, Reading , and Lehigh Valley.



Contemporary regional railroad that serves an intermodal terminal, local businesses and also provides commuter service for a regional transit authority.



HO Scale layout, 19' x 40', set in northern Vermont and New Hampshire circa 1980. Maine Central, Boston & Maine, Canadian Pacific, Lamoille Valley railroads. Digitrax DCC, scenery 80% complete.



HO scale Delaware And Hudson RR loosely represents the line Susquehanna in the 1970's. The layout room is about 18' x 25' around the wall with two staging areas.



The Delaware & Raritan RR is a 15 x 30 foot HO layout. It uses 30 locomotives and over 150 cars and is NCC DCC controlled



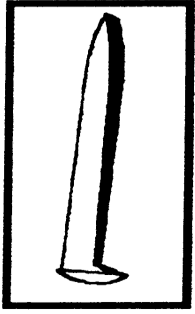
The New England and Western is a railroad operating in the northeastern US using leased power from other railroads in the area, primarily B&M and MEC. The layout has a double track mainline, a freight yard, city passenger station and industrial areas providing about 40 destinations for two local switching jobs, era is roughly the 1970s.

Less Than Carload Minimum Identification

This interesting view of a Norfolk Southern General Electric C40-9W was taken in 2010. It has a coat of tan primer paint with only the Road Number and Norfolk Southern on the cab sides along with its number in the number boards. Due to a power shortage NS had several units in this scheme.

This could make for a unique unit on your layout using the NS approach.





ACHIEVEMENT PROGRAM GOLDEN SPIKE AWARD APPLICATION FORM

PLEASE COMPLETE THIS APPLICATION FORM AND SEND TO YOUR REGIONAL OR DIVISIONAL AP CHAIR

Member's Name _____ NMRA#: _____ EXP: _____

Address: _____ City: _____

State/Prov: _____ Country: _____ Postal Code: _____

Date Submitted: _____ Region: _____

The Golden Spike Award will be awarded to any NMRA member who has completed the Qualifications Checklist, obtained the necessary signatures and who does not hold MMR status. It will be administered by the regional and divisional AP Chairs. AP regulations and definitions apply for scratchbuilding and superdetailing. To qualify for the award the member must complete the following checklist, obtain the signature of the divisional AP Chair or another NMRA member designated by the divisional Chair. The divisional Chair will submit the signed form to the regional AP Chair who will issue the Golden Spike Award certificate.

QUALIFICATIONS CHECKLIST:

1. Rolling Stock (Motive Power & Cars):

Display six units of rolling stock either scratchbuilt, craftsman kits or super-detailed commercial kits.

2. Model Railroad Setting (Structures & Scenery)

- Construct a minimum of eight square feet of layout including scenery.
- Construct five structures either scratchbuilt, craftsman kits or superdetailed commercial kits. If a module has less than five structures, additional structures separate from the scene may be presented.

3. Engineering (Civil & Electrical)

- Three types of trackage required (e.g. turnout, crossing, crossover, etc.). All must be properly ballasted and installed on proper roadbed. Commercial trackage may be used.
- All installed trackage must be properly wired so that two trains can be operated simultaneously (e.g. double track main, single track main with sidings, and block or command control).
- Provide one additional electrical feature such as power operated turnouts, signaling, turnout indication, lighted buildings, etc.

Witness: _____ Name: _____ NMRA #: _____

Regional AP Chair: _____ Region: _____