



# CLINKERS

Official Newsletter of the New Jersey Division  
Mid-Eastern Region, NMRA  
P.O. Box 8694  
Trenton, NJ 08650  
www.NJDivNMRA.org

Clinkers is published 5 times per year for the NMRA members and friends of the New Jersey Division. Online newsletter always available at NJ Division website. Mailed hardcopy newsletter is \$7.00 per year. The opinions expressed do not necessarily reflect those of the Division. Products and publications mentioned in Clinkers in no way constitute an endorsement by the Division.

## Contributing to Clinkers

Clinkers welcomes contributions from the New Jersey Division membership. Letters, articles, photos and other items may be mailed or emailed to the editor at the above address. Please include return postage if you would like materials returned.

Deadline for next issue: July 22, 2014

## Board of Directors 2013 - 2014

### Superintendent

Bob Clegg  
856 696 0463  
BobcatCS@comcast.net

### Asst. Superintendent

Chris Widmaier  
609 510 2701

### Treasurer

Bob Liberman  
609 298 7337

### Secretary

Tom Lavin  
856 824 1405

### Director, Clinics

John Gallagher  
856 228 2239

### Director, Librarian

Bill Howard  
609 584 1818

### Director, Layouts

Michael Mosher  
856 293 9874

### Division AP Chair

PJ Mattson, MMR  
856 467 0421

## Membership Information

Any person who is a member of the NMRA and lives within the boundaries of the NJ Division as defined by the NMRA is also a member of the division. Non member guests are welcome to attend two of our meets, after which they will be asked to join the NMRA.

NJ Division annual activity fee: \$10.00 (includes 5 meets) or individual meets \$5 at the door. First time guests, no charge!

National Model Railroad Association  
P.O. Box 1328  
Soddy Daisy TN 37384-1328  
www.nmra.org

# SCHEDULES

## NEXT BOARD MEETING

Sunday, August 3, 2014

Host: Bob Clegg

BobcatCS@comcast.net

856 696 0463

All members are invited.

Please let us know if you plan to attend.

## NJ DIVISION SEPTEMBER MEET

Saturday, September 13, 2014

Vineland area

Location to be determined

Contest:

Detailed Steam Locomotives

Clinics:

To be determined

## PHILADELPHIA DIVISION MEET

Saturday, November 1, 2014

Brandywine Towne Center

Wilmington, DE

Details will be in the September Clinkers

## NJ DIVISION NOVEMBER MEET

Saturday, November 15, 2014

Knights of Columbus Hall

15 East Lacey Road

Forked River, NJ 08731

Contest:

Detailed/Weathered Tank Cars

Clinics:

To be determined

# NJ DIVISION AREA HOBBY SHOPS

## Sattler's Hobby Shop\*

14 Haddon Ave.  
Westmont, NJ 08108  
(856) 854-7136

## Jackson Hobby Shop\*

2275 West County Line Rd.  
Jackson, NJ 08527  
(732) 364-3334  
www.jacksonhobby.com

## The Train Room\*

715 Arnold Ave.  
Pt. Pleasant Beach, NJ 08742  
(732) 892-5145  
www.thetrainroomNJ.com

## Bob's Hobbies and Crafts

67 S. Broadway  
Pitman, NJ 08071  
(856) 589 1777

Bobshobbiesandcrafts@yahoo.com

## Yankee Dabber - Track 33

101 W. Kings Hwy.  
Bellmawr, NJ 08031  
yankeedabber@aol.com

\*Offers 10% discount to NMRA members

## NMRA NATIONAL CONVENTION

July 13 - July 19, 2014

New Cleveland Convention Center  
300 Lakeside Avenue  
Cleveland, OH 44114

<http://www.2014cleveland.org/>

# VIEW FROM THE CAB

Bob Clegg

## Mea Culpa

Let me start by apologizing for forgetting to put the maps together for the March meet. I was preparing for a vacation during the previous week, as my absence from the meet indicated, and just plain forgot to do them before I left. Your board will put procedures in place to prevent such oversights in the future.

Thanks to Michael and Diamond Bill for at least making copies of all the names and addresses available. I hope you were still able to get to these fine railroads.

## MER Fall Convention 2015

We have had a totally positive response to the proposal to hold the 2015 convention in our Division and so are going forward with it. The folks in the Philadelphia Division have agreed to help us with this effort, and we welcome them!

We have scheduled a kickoff meeting to get organized. The meeting will be held on Sunday afternoon, May 4, at 1:00 pm in the community room at 117 East Atlantic Ave. located across from the Railroad Station in Haddon Heights.

I know that this is a bit short notice for those of you who receive your newsletter in hard copy, but if you are interested, please try to attend.

If you can't make the meeting, fear not! Just send me an email or call so we can include you on the committee, send you status updates, and to get you on the list to be notified of future meetings! In the mean time if you have any suggestions, please let me know. Your suggestions will be presented at the meeting. All are welcome to participate as part of the committee.

Our first priority is to choose a location for the convention. We also need to begin the process of lining up clinics, operating sessions, and home railroad visits, and if possible, prototype visits. If you can contribute in any of these areas, please do! Again send an email or make a phone call, or talk to any board member at a meet to let us know how you can help.

## New Jersey Division Elections

As noted, this issue of your newsletter includes the petition form required in order to be included as a candidate for a position on the New Jersey Division board of directors.

The life blood of any organization is the participation of as many members as possible. New members means new ideas. If you would like to give back a little to your division by being a board member, please fill out a petition and return it to the address indicated as soon as you can.

Remember, they must be RECEIVED by August 1. Postmarks don't count! If we receive more petitions than we have open positions, an election will be held with ballots being included in your September newsletter available in mid August. Results will be announced at the September meet. You can find the petition form and complete instructions on page six.

## NJ Division 2014-2015 Meet Schedule

Mark your calendar with these dates and locations for NJ Division meets for next year subject to change if necessary:

September 13, Vineland

November 15, Forked River

January 17, Haddon Twp.

March 14, Hamilton Twp.

May 14, TBA, joint meet with

Garden State Division, NER



## Cool Tools



This Cool Tool is not technically a tool, but can really help to make your turnouts work better. It's *graphite powder* available at any hobby shop that sells Pinewood Derby cars and accessories. It comes in a small plastic tube and can be applied to the throw bar using a "puff" or two. Use it sparingly, just enough to unstick those sticky points!

This is a Cool Tool!

# NEW JERSEY DIVISION MODEL CONTEST NEWS

Bill Grosse, Jr. Contest Chairman

At our March meet in Hamilton Twp, I presented a certificate and dues voucher to Joe Zebrowski. Joe was chosen as the winner of the Favorite Passenger Car(s) / Train Contest at our January meet in Haddon Twp.

The contest for this meet was "Detailed Display / Scene / Diorama / Module." We had 3 members bring in entries in 3 different scales, N, HO, & G

The winner of the contest was Richard LaRue with his HO scale Bulk Tar Storage Facility Scene that was modeled from an article and plans that were in the October 1978 Model Railroader Magazine.

He will receive a certificate and dues voucher at the upcoming meet in May in Middletown, Monmouth County.

The other entries were:

Jim Peoples - Scratch built G scale Grand Canyon Depot.

Tom Mihalko - N scale Portable Railroad Layout, he uses it to promote model railroading to groups and individuals.

Thank you to everyone who brought

**See Contest on page 7**



# ACHIEVEMENT PROGRAM NEWS

## PJ MATTSON, MMR & DICK GENTHNER, MMR

Several more members have made personal progress in the Achievement Program since our last meet. Dick Perry has been awarded the Electrical Certificate and will be given his certificate at the May meet. Also Tom Griffiths has been awarded the Locomotives certificate according to the latest MER *Local*. Hopefully his certificate will arrive in time for the May meet as well. Congratulations to both Dick and Tom.

Now a few personal notes: I have now held two operating sessions on my new switching layout. Six of the operators from my old A&W railroad have tried operations on the new layout and given me good ideas on how to improve the layout going forward.

This layout is in the back end of my garage at our new residence in Applewood Estates in Freehold NJ. Applewood is a continuing care retirement community and we have a small two bedroom cottage with an attached garage.

I will not be at the May meet since I will be watching one of my grandchildren graduate with honors from Notre Dame University with a Masters degree in the Classics. This means I will have to have to postpone having an open house for the new Arpee and Western railroad version 7 until the next time NJ Division meets in the Monmouth County area.

I mentioned in the previous AP News article that I would cover the last two certificates, Cars and Locomotives, in this issue to finish

this discussion on the Achievement Program. I consider these two certificates to be the most difficult to obtain as they both require extensive scratch building and judging. I am sure that any member who has received these certificates will agree that they are difficult.

**CARS:** This certificate requires the member to build a total of eight operable scale models of railroad cars. The 8 cars must include at least four different types of cars, one of which must be a passenger car. All of these models must be super detailed with commercial parts or scratch built parts. Further, at least four (4) of the models must be completely scratch built. And last but not least, four (4) of the models must earn 87 ½ points or more in an AP Merit Award judging. Other than that it is easy. So this is a certificate that requires lots of highly detailed work, on different kinds of rolling stock, and half of the models must be judged and get merit awards. I remember when I was working on "Cars", I scratch built four passenger cars (two different types) and four highly detailed freight cars of different types to get the cars certificate. I got the four passenger cars all judged at the same time and received the four Merit Awards for them.

There are a few other requirements, like providing detailed write ups on each of the 8 cars, along with parts lists, plans, the method of construction, etc. Photos always help when you write your descriptions.

**LOCOS:** This is also called "Motive Power" because there are no restrictions on what kind of locomotives you can build just as long as it is a self propelled vehicle. Like "Cars" all the models must be super detailed, but you have to build only three loco models. One of the locos must be completely scratch built. As in the case of the "Cars" certificate there are very specific requirements on what scratch built means and what parts can be commercial, like the motor and gears. The AP requirements are spelled out on the NMRA website and SOQ forms. All of the locomotives must earn at least 87½ points and win a Merit Award when they are judged.

**MASTER MODEL RAILROADER:** So there you have it. You need eight cars or three locomotives, all highly detailed, some scratch built and some must be Merit Award winners in an AP judging. Be sure to read the restrictions for both of the categories since the judges are required to look at the models and requirements in detail.

You do have to earn either the Cars or Locomotives certificate, or both, to get the next award, becoming a Master Model Railroader.

The rest of the requirements for MMR status are simple. When you have earned at least seven AP certificates including one in each of the four groupings, you just fill out and send in

**See Achievement Program on page 7**



## Petition for Nomination as a Director of the New Jersey Division for the term October 2014 through September 2016

Candidate's Name (Please print legibly): \_\_\_\_\_

Candidate's NMRA member number: \_\_\_\_\_ Expiration Date: \_\_\_\_\_

Petitioners' Signatures NMRA member number: \_\_\_\_\_ Expiration Date: \_\_\_\_\_

1. \_\_\_\_\_

2. \_\_\_\_\_

3. \_\_\_\_\_

4. \_\_\_\_\_

5. \_\_\_\_\_

As a candidate for the position of Director of the New Jersey Division, NMRA I hereby certify that I am a member in good standing of the New Jersey Division, NMRA and that to the best of my knowledge, all signers of this petition are members in good standing of the New Jersey Division, NMRA.

\_\_\_\_\_  
Candidate's signature \_\_\_\_\_ Date \_\_\_\_\_

-----  
Cut along line above

The New Jersey Division, Mid Eastern Region, National Model Railroad Association, will be holding an election of Directors for the term October 2014 through September 2016. All regular and associate NMRA members living within the boundaries of the New Jersey Division are eligible to be candidates for the annual election.

In order to have your name appear on the ballot, as specified in the bylaws of the NJ Division, you must submit a signed petition indicating your desire to be a candidate and have it signed by 5 other regular or associate NMRA members who also reside within the boundaries of the NJ Division. Their NMRA membership numbers and expiration dates also need to be included. **Note:** Rail Pass members are **not eligible** to be a candidate, nor to be a signer of this petition. When complete, mail your petition to the Chairman of the Nominating Committee:

Mr. John Gallagher  
Attn: NJ Division Election Committee  
815 Flint Road  
Turnersville, NJ 08012-1341

All petitions must be received by August 1, 2014 in order to be included on the ballot. All petitions will be verified by the Nominating Committee.

The petition form is enclosed. If you are reading this online, please print this page and fill out the form. If you are reading this in hardcopy, simply copy and complete this page or use this original. When completed, please mail it to the address shown.

Along with your nominating petition, please include a short letter of introduction to let the members know why you should be elected to the Board of Directors. This information will be sent with the ballot for members to use when considering how to cast their votes.

If an election is necessary, ballots will be mailed with the September Clinkers in the third week of August and ballots must be received by September 6, 2014. Results will be announced during the NJ Division meet in Vineland on September 13. Any further questions can be directed to the Chairman of the Nominating Committee, John Gallagher, at 856 228 2239 or email [gallagherjv39@verizon.net](mailto:gallagherjv39@verizon.net)

## May Meet Continued from page 1

will present "Live Steam Basics." George says, "Have you ever wondered what it takes to get a live steam engine running on your garden layout? I'll take you through the steps from cold piece of metal to hot fiery beast. We'll even fire up a real one.'

George's railroad will also be one of the stops on the afternoon tour so you can see his live steam in action on his "G" scale railroad.

Speaking of the afternoon tour, we currently have about a dozen stops for you to choose from ranging from George's live steam "G", at least one "O", several "HO" and at least one "N" scale layouts.

Don't be upset that you can't get to all of them. The aim is for variety and choice. If there is a destination to which you cannot get within the allotted time, 1:00 pm to 5:00 pm, contact the host to see if you can arrange another time.

Dust off your collection of Diesel locomotives and bring a few to enter in the contest. Your entry could win a certificate for next year's activity fee.

Bring your items to sell as well. Remember, one man's trash is another man's treasure!

Needless to say there will be door prizes, the raffle, refreshments, and the opportunity to renew old friendships and perhaps make a few new ones.

Granted, it's a bit of a hike to Middletown for some of us in the southern part of the division, but it's sure to be worth your while!



## Achievement Program Continued from page 5

the MMR SOQ showing which seven awards you have earned and you will become the next MMR. Of course you can earn all eleven of the certificates, but only seven are required to become a Master Model Railroader

Also remember that there is lots of help in the NJ Division if you have questions or problems in any area of the NMRA achievement program. There are even four Master Model Railroaders available to help you and who will remind you that it can be done. Just set your mind to it and it can happen for you. Good luck in your quest to be the next Master Model Railroader.



PJ Mattson, MMR  
pj mattson@comcast.net  
856 467 0421

Dick Genthner, MMR  
agent1@optonline.net  
732 462 0216

### ACHIEVEMENT PROGRAM

#### GOLDEN SPIKE AWARD

#### APPLICATION FORM

is on page 9 in *Online Color Extras*.

Above right: two photos of Tom Mihalko's portable N Scale layout.

Right: Jim Peoples' Scratch built G scale Grand Canyon Depot.



## Contest Continued from page 4

models to show in the contest.

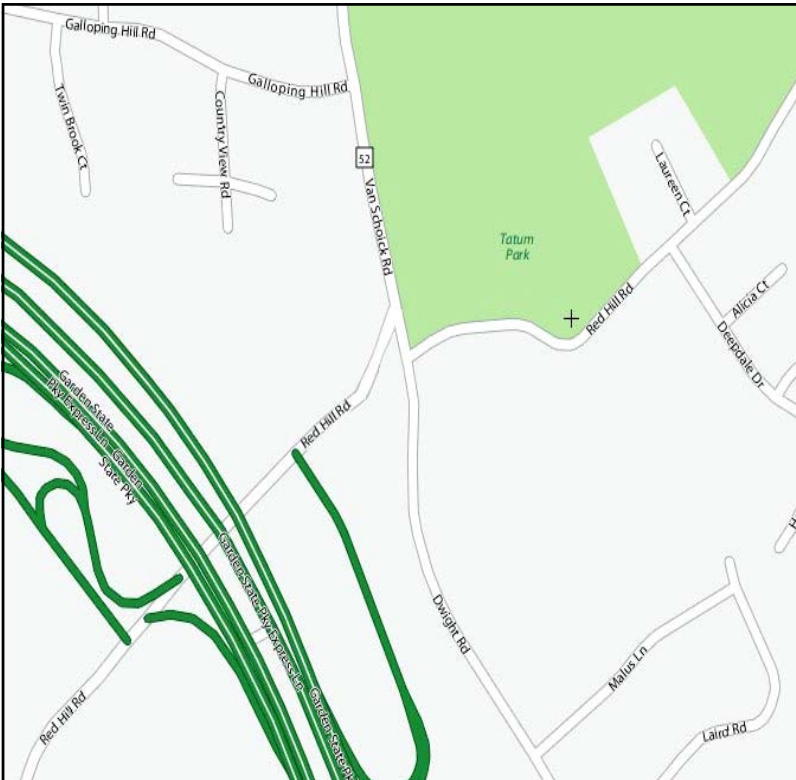
Be sure to vote for your favorite contest entry as a way to thank the presenters.

The next Contest will be Detailed Diesel Locomotives at the Middletown Meet in May.



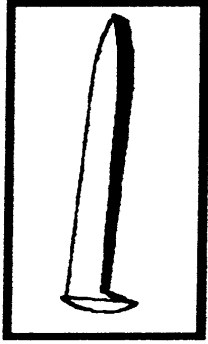
# MAPS TO THE MAY MEET

**From almost anywhere:** Take the **Garden State Parkway** to **Exit 114**. Use the **local lanes** of the Parkway only, not the express lanes! Go **east** on **Red Hill Rd** to the first traffic light. Turn **right** on **Dwight Rd**. then a quick **left** to get back onto **Red Hill Road**. Turn **Right** on **Kings Highway**. The meet location is **Christ Episcopal Church**, 90 Kings Highway, which will be about a block up on your **right**. Don't forget, the Parkway is a toll road, so have your change or tokens ready if you don't have "EZ- Pass."



**Note: Parking is across the street from the church!**





# ACHIEVEMENT PROGRAM GOLDEN SPIKE AWARD APPLICATION FORM

PLEASE COMPLETE THIS APPLICATION FORM AND SEND TO YOUR REGIONAL OR DIVISIONAL AP CHAIR

Member's Name: \_\_\_\_\_ NMRA#: \_\_\_\_\_ EXP: \_\_\_\_\_

Address: \_\_\_\_\_ City: \_\_\_\_\_

State/Prov: \_\_\_\_\_ Country: \_\_\_\_\_ Postal Code: \_\_\_\_\_

Date Submitted: \_\_\_\_\_ Region: \_\_\_\_\_

The Golden Spike Award will be awarded to any NMRA member who has completed the Qualifications Checklist, obtained the necessary signatures and who does not hold MMR status. It will be administered by the regional and divisional AP Chairs. AP regulations and definitions apply for scratch building and super detailing. To qualify for the award the member must complete the following checklist, obtain the signature of the divisional AP Chair or another NMRA member designated by the divisional Chair. The divisional Chair will submit the signed form to the regional AP Chair who will issue the Golden Spike Award certificate.

## QUALIFICATIONS CHECKLIST:

### 1. Rolling Stock (Motive Power & Cars):

Display six units of rolling stock either scratch built, craftsman kits or super-detailed commercial kits.

### 2. Model Railroad Setting (Structures & Scenery)

Construct a minimum of eight square feet of layout including scenery.  
Construct five structures either scratch built, craftsman kits or super detailed commercial kits. If a module has less than five structures, additional structures separate from the scene may be presented.

### 3. Engineering (Civil & Electrical)

Three types of track required (e.g. turnout, crossing, crossover, etc.). All must be properly ballasted and installed on proper roadbed. Commercial track may be used.  
All installed track must be properly wired so that two trains can be operated simultaneously (e.g. double track main, single track main with sidings, and block or command control).  
Provide one additional electrical feature such as power operated turnouts, signaling, turnout indication, lighted buildings, etc.

Witness: \_\_\_\_\_ Print Name: \_\_\_\_\_ NMRA #: \_\_\_\_\_

Regional AP Chair: \_\_\_\_\_ Region: \_\_\_\_\_

# ONLINE COLOR EXTRAS

## Tortoise Switch Machine Fix

By Dave Albertson

The tortoise switch machine is very reliable, however the contact points are anchored by small plastic pins which shear or degrade from short circuits in time. Circuitron offers a one year warranty, which I have used once. The machine was returned from Circuitron with the same defect it was sent back for (loose circuit board). Here is what I do to correct the contact mounting issue. Please see photos lower right.

Tortoise installation and contact circuit diagram:

[http://www.circuitron.com/index\\_files/ins/800-6000ins.pdf](http://www.circuitron.com/index_files/ins/800-6000ins.pdf)

Steps to re-attach contacts


1. Disassemble Tortoise if contacts are not working (Poles 2/3 and 4 commonly used for back wiring turnouts). Five screws hold the two halves together (X- Pattern) take note of gear location.
2. Use no.11 X-Acto blade to mark the center of each broken pin on the throw arm.
3. Drill the marked centers with a 3/32 drill and pin vise
4. Small self tapping screws are required to mount the contacts, drill throw arm with the corresponding size drill for the self tapping screw. Note screw heads must be small enough to clear the screw heads of the adjacent set of contacts.
5. Support contact mounting plate with needle nose pliers to keep contacts from twisting or distorting. Enlarge contact mounting holes with No 11 X-Acto Blade
7. Carefully mount contacts on throw arm with self tapping screws.
8. Re assemble tortoise use only center screw to hold case halves together until unit has been tested. Note: the gears will only go back in the housing location where they came from.
9. Test gear location and re-assembly : Gently move throw arm left to

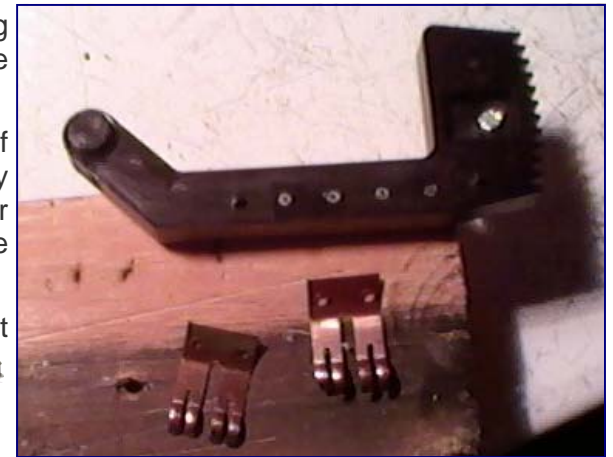
right, if there is abnormal resistance the gears are assembled incorrectly open the case and double check gear location.

10. With the tortoise throw arm full left or full right, connect a Multimeter , select continuity and check contact current flow. Connect one lead to terminal 4 you should read continuity at terminal 2 or 3 (depending on the left or right position of the throw arm). Gently move the throw arm and check for continuity on the opposite terminal (2 or 3). If using contacts from terminals 5, 6 and 7 repeat the same test connecting one lead to terminal 5 check for continuity on terminals 6 or 7 depending upon the position of the throw bar.

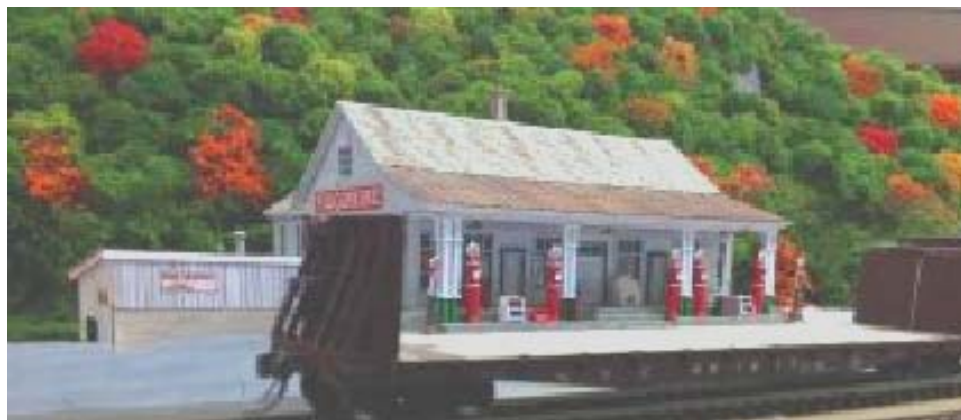
11. Install the remaining four screws in the tortoise case.

12. Check operation of tortoise electrically throwing machine under power. If the machine throws smoothly re-install !

Congratulations you just saved about \$20.00 



# ONLINE COLOR EXTRAS



This page:  
Clockwise from upper left on Bob Hans' railroad are  
South River's Kingston creamery in Amenia, NY,  
NYC freight crossing the NH at Boston Corners NY  
Texaco station in Wassaic, NY  
Feed mill and creamery in Boston Corners, NY

Page 12:  
Photos of George Speidel's Erie Lackawanna themed railroad

Page 13:  
Photos of Thom Radice's Civil War era railroad

See these and fine railroads and several more all on the afternoon tour  
at the May meet in Middletown

# ONLINE COLOR EXTRAS



Why not  
bring a  
friend to  
the meet  
and to see  
these  
terrific  
railroads!



# ONLINE COLOR EXTRAS

