

CLINKERS

OFFICIAL NEWSLETTER OF THE NEW JERSEY DIVISION,
MID-EASTERN REGION, NATIONAL MODEL RAILROAD ASSOCIATION

MAY 9, 2015

VOLUME 26 NUMBER 3

May 9th Joint Meet In Hillsborough

On Saturday, May 9, join the NJD for a dual meet with the Garden State Division to be held at the Hillsborough Township Municipal Building. Hillsborough is in Somerset County with the location 10 minutes south of Somerville and the Routes 202/206 circle. The address is 379 South Branch Road, off of Amwell Road and only a few minutes from Route 206.

The meet will feature two clinics, being contributed by one GSD member and one NJD member, with home layouts in the afternoon. White elephant tables will be available. The GSD will also hold a brief Annual Business Meeting and introduce the Officers and Directors for the upcoming year.

Directions and a map can be found on Pages 7 and 8. Maps for nearby lunch spots and self guided tours to four layouts in the afternoon will be available at the meet.

Mike Prokop will present ***Light Up Your Layout With LEDs!*** This clinic demonstrates the many kinds and types of LED strip lights that are available, along with neat ideas and the techniques for using them to

See **May Meet** on page 7

Call for nominations

It's that time of year again! Time to elect directors to serve on the board for the next two years. We have four positions to fill this year.

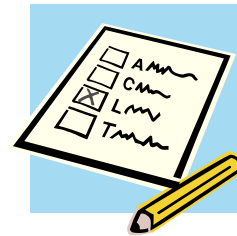
If you would like to be included as a candidate for election to a position on the NJ Division Board of Directors, please fill out the petition found on page 6 and return it to the election committee chairman, Tom Lavin.

Tom's address is included on page 6 along with the petition and instructions for completing the form. All petitions must be received no later than August 1.

If a vote is necessary, ballots will be included with the September edition of your *Clinkers* which will be sent to all NMRA members residing in the NJ Division. You should receive that issue by August 19 either via email or USPS.

Ballots must be received by the election chairman on or before September 5. Postmarks don't count!

Results of the election will be announced at the meet in September.



NEXT DIVISION MEET

Saturday, May 9, 2015

9:00 AM to 12:00 noon

Hillsborough Township
Municipal Building
379 South Branch Road
Hillsborough, NJ 08844

Clinics:

- ***Light Up Your Layout With LEDs!*** By Mike Prokop
- ***Sheet Styrene Backdrops*** by Jim Fawcett

Contest:

None this meet

Layout Tour:

Saturday: 1 pm to 5 pm

IN THIS ISSUE

Schedules	2
View From the Cab	3
Model Contest News	4
Nomination Form	6
Directions & Maps to the Meet	7
Online Color Extras	9

CLINKERS

Official Newsletter of the New Jersey Division
Mid-Eastern Region, NMRA
P.O. Box 8694
Trenton, NJ 08650
www.NJDivNMRA.org

Clinkers is published 5 times per year for the NMRA members and friends of the New Jersey Division. Online newsletter always available at NJ Division website. Mailed hardcopy newsletter is \$7.00 per year. The opinions expressed do not necessarily reflect those of the Division. Products and publications mentioned in Clinkers in no way constitute an endorsement by the Division.

Contributing to Clinkers

Clinkers welcomes contributions from the New Jersey Division membership. Letters, articles, photos and other items may be mailed or emailed to the editor at the above address. Please include return postage if you would like materials returned.

Deadline for next issue: August 1, 2015

Board of Directors 2014 - 2015

Superintendent

Bob Clegg
856 696 0463
BobcatCS@comcast.net

Asst. Superintendent

and Clinics Chair
John Gallagher
856 228 2239

Treasurer

Bill Grosse, Jr
609 585 4616

Secretary

Tom Lavin
856 824 1504

Director

Mike Prokop.
609 586 9818

Director, Librarian

Bill Howard
609 584 1818

Director, Layouts

Michael Mosher
856 293 9874

Division AP Chair

PJ Mattson, MMR
856 467 0421

Membership Information

Any person who is a member of the NMRA and lives within the boundaries of the NJ Division as defined by the NMRA is also a member of the division. Non member guests are welcome to attend two of our meets, after which they will be asked to join the NMRA.

NJ Division annual activity fee: \$10.00 (includes 5 meets) or individual meets \$5 at the door. First time guests, no charge!

National Model Railroad Association
P.O. Box 1328
Soddy Daisy TN 37384-1328

SCHEDULES

NJ DIVISION MAY MEET

Saturday, May 9, 2015

Hillsborough Township Municipal Building
379 South Branch Road
Hillsborough, NJ 08844

Contest:

None This Meet

Clinics:

Light Up Your Layout With LEDs!
Sheet Styrene Backdrops

NEXT BOARD MEETING

Sunday, August 9, 2015

Host: Bob Clegg
BobcatCS@comcast.net
856 696 0463

All members are invited.

Please let us know if you plan to attend.

NJ DIVISION SEPTEMBER MEET

Saturday, September 19, 2015

(Tentative Location)
Almonesson United Methodist Church
Deptford, NJ

Contest: Scratchbuilt Rolling Stock

Clinics: To be determined

NJ DIVISION AREA HOBBY SHOPS

Sattler's Hobby Shop*

14 Haddon Ave.
Westmont, NJ 08108
(856) 854-7136

Jackson Hobby Shop*

2275 West County Line Rd.
Jackson, NJ 08527
(732) 364-3334
www.jacksonhobby.com

The Train Room*

715 Arnold Ave.
Pt. Pleasant Beach, NJ 08742
(732) 892-5145
www.thetrainroomNJ.com

Bob's Hobbies and Crafts

67 S. Broadway
Pitman, NJ 08071
(856) 589 1777
Bobshobbiesandcrafts@yahoo.com

Yankee Dabber - Track 33

101 W. Kings Hwy.
Bellmawr, NJ 08031
yankeedabber@aol.com

*Offers 10% discount to NMRA members

NMRA NATIONAL

CONVENTION

August 23 - August 30, 2015
Portland OR

<http://www.nmra2015portland.org/>

VIEW FROM THE CAB

Bob Clegg

As the column name implies, this is a look ahead. We have quite a few events coming up in the not so distant future.

May meet

First, our meet this in May will be a joint meet hosted by the Garden State Division and be held May 9 at the Hillsborough Township Municipal Building, 379 South Branch Road, Hillsboro, NJ. It's a bit of a ride from the southern parts of the division, but I encourage all of you to make the effort to attend. We'll get to see some new clinics and home railroads. Also, the guys in the Garden State Division have supported out meets for the last few years, so it would be good to reciprocate.

Our first meet for next year has been tentatively scheduled for September 19 at the Almonesson United Methodist Church at the corner of Cooper Street and Almonesson Road in Deptford. The program hasn't been set yet, but stay tuned for developments. Word has it that Steve Moylan's basement has been repaired and the railroad is back in operation. I'm sure everyone will want to check it out.

Delaware Valley Turn Convention

Looking a bit further down the road, we will be hosting the MER 2015 Fall Convention,

Delaware Valley Turn to be held in Mount Laurel October 22 to 25. We will be joined by the members of the Northeast Region as their Fall Convention as well.

So far we have about 50 clinicians from the MER and NER on the schedule. There are also more than 40 railroads scheduled to be open for visitors.

We will have four prototype tours, none of which will take more than four hours or so. We have the Perdue, was Agway last time, grain elevator in Bordentown. That will be a Friday morning tour to see the rail operations at the site. In the fall farmers bring their corn and soy beans where they are stored for a short time until they can be loaded into covered hoppers and sent on for processing.

Also on Friday morning, will be the Conrail Dispatch Center tour. The Center is located only about half a mile from the hotel. This will be a short tour, about 45 minutes. There will be two sections for the tour, each limited to 12 attendees so get your reservation in early.

There will be two tours on Saturday as well. One will be the Patco facility in Lindenwold. We'll carpool to Woodcrest Station and take the train to Lindenwold.

The facility is a short walk from the station. Finally, On Saturday morning we'll visit the Amtrak Central Electrification and Train

Control Center in Wilmington. The center controls all traffic on the Northeast Corridor from Washington, DC Union Station north to North Philadelphia and west to the end of electrification in Harrisburg. This promises to be a very cool tour, so get your reservations in for this one as well. This will be a bus tour due to parking and security considerations and so is limited to 48 folks, and we have a minimum of 28. Cost for the tour is \$20 which will cover the cost of transportation.

On a more personal note, my century old house rehab is in its final phases, siding and paint yet to be done, but it's livable and I can devote a bit more time to other things, like writing this article. I also look forward to attending some operating sessions and to actually working on my own railroad again.

How about you? What are your model railroad plans for the coming months? I'd like to hear about them!



**ACHIEVEMENT PROGRAM
GOLDEN SPIKE AWARD
APPLICATION FORM**
is on page 12 in Online Color Extras.

NEW JERSEY DIVISION MODEL CONTEST NEWS

Bill Grosse, Jr. Contest Chairman

At our March meet in Hamilton Twp., I presented a certificate and dues voucher to Ron Baile. Ron was chosen as the winner of the Detailed / Weathered Refrigerated (Reefer) Cars Contest in Haddon Twp.

This meet in Hamilton had a dual Photo Contest. There was a Prototype Photo Category and a Model Photo Category. Members were asked to vote for one in each category.

We had 3 members bring in entries of Model Scene Photos.

The winner of the Model Photo Contest was Tom Griffiths with his Rexall Drug Store next to a B&O RR Crossing.

The other Model entries were:

Rick Spano - Logging on the Winged Foot & Western Railway

Tom Griffiths - Santa and the Coal Drag

There were 7 entries in the Prototype Photo Category by 4 members.

The winner of the Prototype Photo Contest was Bill Grosse with his Curving Rails at MP 30 at Yardville, NJ.

See **Contest** on page 5



TOP: Tom Griffiths Winning Model Photo



BOTTOM: Bill Grosse's Winning Prototype Photo

Contest Continued from page 4

The other entries were:

Bill Grosse - Rail with Character (2 piece entry) found at Yardville, NJ

Bill Grosse - Yardville, NJ Bridge, Long Side View

Joseph Rugarber - Promontory Point Utah

Joseph Rugarber - Colorado Railroad Museum – Golden

Rick Spano - NS SD-40E Locomotive at Gallitzin, PA

Roger Thomas - Eastbound on NS Main in Lilly, PA

There are photos of all the above entries on Page 9 in the ONLINE COLOR EXTRAS section.

Thank you to everyone who entered their photos in the contests. Remember to vote for your favorite entry at the next meet as a way to thank those who enter.

Next Contest September 2015
Any Scratch Built Rolling Stock

If you have a model category you would like to see as a contest, please let me know at the contest table and I will try to add it to the next fiscal year schedule.



DVT 2015 VOLUNTEERS NEEDED

The New Jersey Division is excited to be named as the host for the Mid-Eastern Region NMRA Fall convention in 2015!

The convention will be in Mt. Laurel, NJ at the Hotel ML on Rt. 73 between I-295 and the NJ Turnpike on October 22-25, 2015.

As always, a great convention needs volunteers, from layout hosts, clinicians, and on-site support. We ask that all NJ Division NMRA members consider how they can best help out. Even if it is as simple as manning the contest room for 1 hour, the opportunity is there for you to help make this a GREAT convention!

More information is at the web site

<http://delawarevalleyturn.org/>

Why not bring a friend to a meet and share your hobby with them?

Dear New Jersey Division Member:

The New Jersey Division, Mid Eastern Region, National Model Railroad Association, will be holding an election of Directors for the term September 2015 through August 2017. All regular NMRA members living within the boundaries of the New Jersey Division are eligible to be candidates for the annual election.

In order to have your name appear on the ballot, as specified in the bylaws of the NJ Division, you must submit a signed petition indicating your desire to be a candidate, and have it signed by 5 other regular NMRA members who also reside within the boundaries of the NJ Division. Their NMRA membership numbers and expiration dates also must be included. This petition should then be mailed to the Chairman of the Nominating Committee:

Tom Lavin

Attn: NJ Division Election

P. O. Box 5065

Delanco, NJ 08075

All petitions must be received by August 1, 2015 in order to be included on the ballot. All petitions will be verified by the Nominating Committee.

A petition form is included below. If you are reading this online, please print this page and fill in the form. If you have received this in hardcopy, simply fill in the form. When completed, mail it to the address above.

Along with your nominating petition, please include a short letter of introduction to let the members know why you should be elected to the Board of Directors. This information will be sent with the ballot for members to use when considering how to cast their votes.

If an election is necessary, ballots will be mailed with the September issue of Clinkers and should arrive no later than August 19, 2015. Completed ballots must be received by the election chairman on or before September 5, 2015. Results will be announced during the NJ Division meet on September 19.

Any further questions can be directed to the Chairman of the Nominating Committee, Tom Lavin at 609 230 4734 or email westvall@aol.com.

On behalf of the New Jersey Division, thank you.

Robert W. Clegg, Superintendent

Petition for Nomination as a Director of the New Jersey Division for the term September 2015 through August 2017

Candidate's Name (Please print legibly): _____

Candidate's NMRA member number: _____ Expiration Date: _____

Petitioners Signatures	NMRA member number:	Expiration Date:
1. _____	_____	_____
2. _____	_____	_____
3. _____	_____	_____
4. _____	_____	_____
5. _____	_____	_____

As a candidate for the position of Director of the New Jersey Division, NMRA I hereby certify that I am a member in good standing of the New Jersey Division, NMRA and that to the best of my knowledge, all signers of this petition are members in good standing of the New Jersey Division, NMRA.

May Meet Continued from page 1

illuminate your railroad. If it's new construction or an existing layout, LED lighting can provide an easy and cost effective method of making your layout shine! Light up dark hidden trackage, staging yards, under the table storage areas, and display cabinets. Working hardware samples of the LED strip lights will be shown along with power supplies, controlling devices, and mounting products.

The second clinic will be **Sheet Styrene Backdrops** by **Jim Fawcett**. Jim has created flowing and seamless backdrops on his two deck layout from styrene sheets. He will show you how four distinctly different applications were used. All attachments are what Jim calls "temporary permanent"; very stable and seamless, but removable. Also, the benefits of styrene include it being light, easy to clean and cut, handle, and attach. It can be used for backdrops on layouts, modules, and dioramas. As a bonus the leftover pieces are great for model making.

Home Layouts

There will be four home layouts open after the meet:

Rick and Linda Spano's N scale Scenic and Undecided is well known to many as it has been published several times including in Great Model Railroads 1999 and they have hosted many open houses. Animation is what the S&U is known for, and being done in N scale takes some fine engineering and patience.

The large layout features long trains passing through the Canadian Rockies, an operating rotary coal dumper with live loads, a sea port on the banks of a large city, special lighting and sound effects and much more.

Ed Sproles' New England & Western Railroad is a freelanced HO scale New England railroad in set roughly in the late 60's to early 70's. Motive power is leased from other regional railroads, mainly BM and MEC, operating with NCE DCC. The double track mainline goes around the walls of a 30' x 34' basement, with one major city and freight yard. Elsewhere two industrial switching areas service a number of large commercial buildings. A connection to the north brings in Canadian traffic. The visible mainline is signaled and scenery is basically complete. An operating session typically requires 6 operators and about 2 hours.

Jim Grill's Neshanic River Railroad is an N-Scale Layout based on the Lehigh Valley and Central Railroad of New Jersey running side by side through eastern Pennsylvania. It has been designed and built with operation as its basic theme. The model transportation system has been in operation since 1984 but has been rebuilt three times. The first was done because of a move to a new house. The second and third rebuilds were due to floods caused by Floyd and Irene.

The present layout is still under repair from Irene, but is fully operational. Several scenes are being refurbished. The operations group meets twice monthly for a two hour operating session. During the open house several of the crew will be operating a typical session to provide visitors with a full appreciation of N-Scale operating capabilities.

The **Newark Terminal** of **Jim Homoki** features Penn Central and CNJ equipment and operations in the 1969-1974 era. Each main line runs as its' own railroad, with interchange in the Newark area. Operating sessions are held monthly and with a recent extension to

Jersey City, now lasts about 3 hours. Most locomotives are sound equipped, with control by Digitrax.

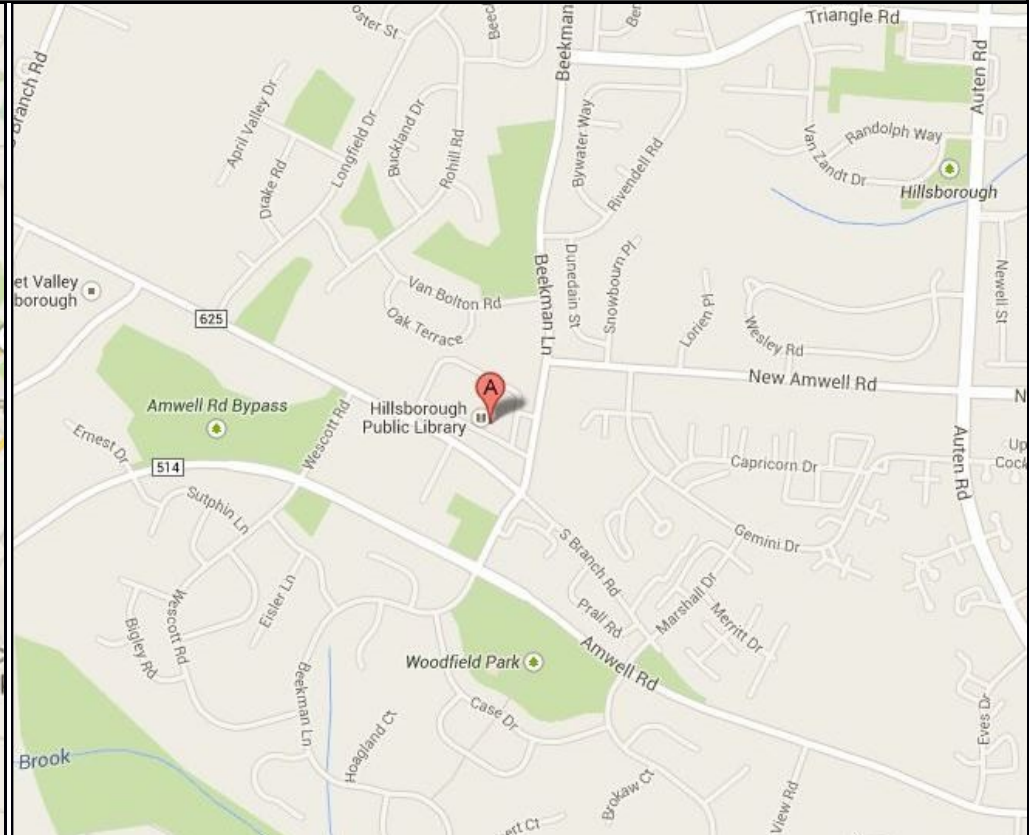
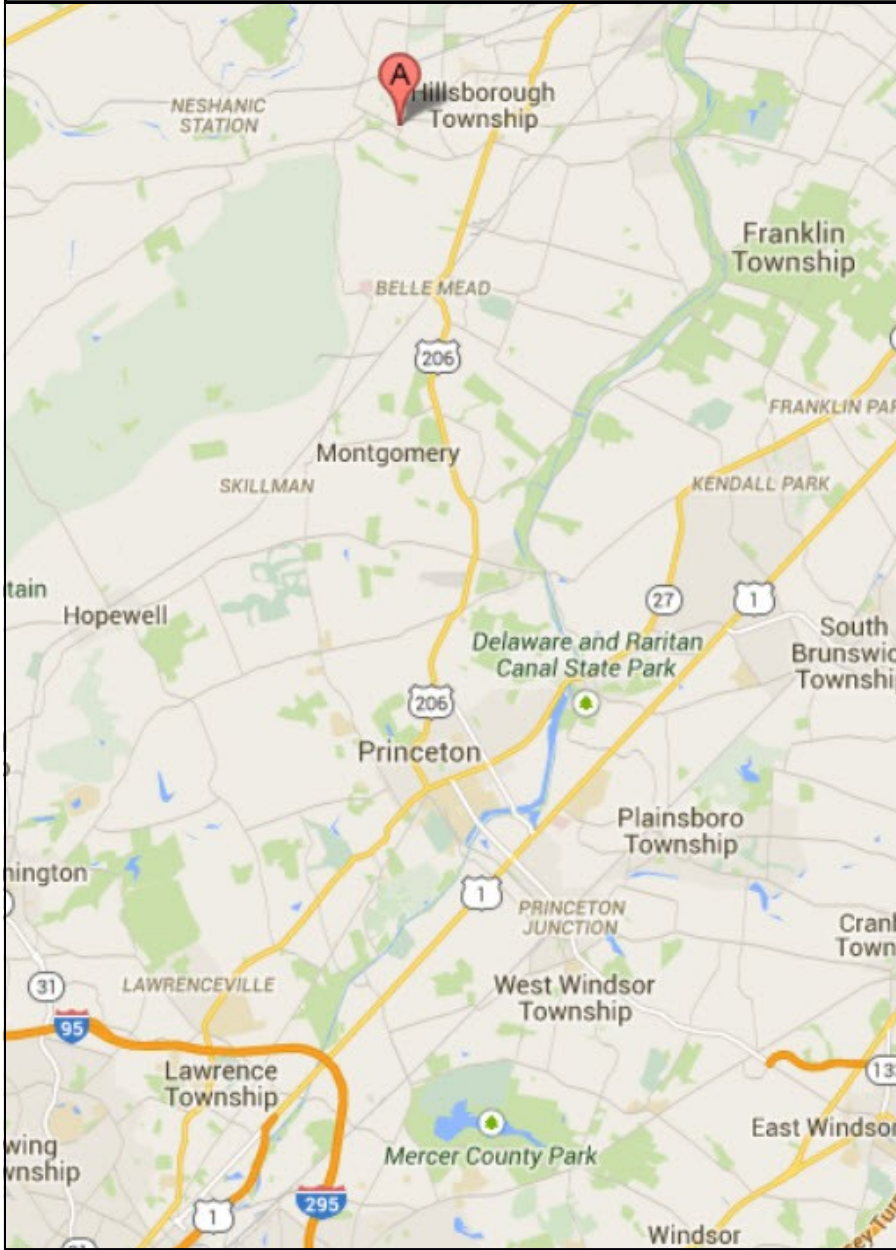
Maps to the layouts as well as to local eateries will be available at the meet.



DIRECTIONS TO THE MAY MEET

1. Find your way to I 295 north, then:
2. Continue onto I-95 S (1.0 mi)
3. Take exit 8B for County Rd 583 N/ Princeton Pike (0.2 mi)
4. Merge onto County Rd 583/ Princeton Pike and Continue to follow County Rd 583 (4.1 mi)
5. Turn left onto Lovers Ln (0.3 mi)
6. Turn right onto Lawrenceville Rd/ Stockton St (466 ft)
7. Turn left onto Elm Rd (0.8 mi)
8. Continue onto Great Rd (4.1 mi)
9. Continue onto Blawenburg Belle Mead Rd (4.2 mi)
10. Turn left onto E Mountain Rd (3.1 mi)
11. Turn right onto Amwell Rd (0.8 mi)

MAPS TO THE MAY MEET



DIRECTIONS on PAGE 7

GPS NOTE

Be aware that your GPS directions may not be the fastest way to the meet as it tends to keep you on the major highways.

ONLINE COLOR EXTRAS

CONTEST PHOTOS

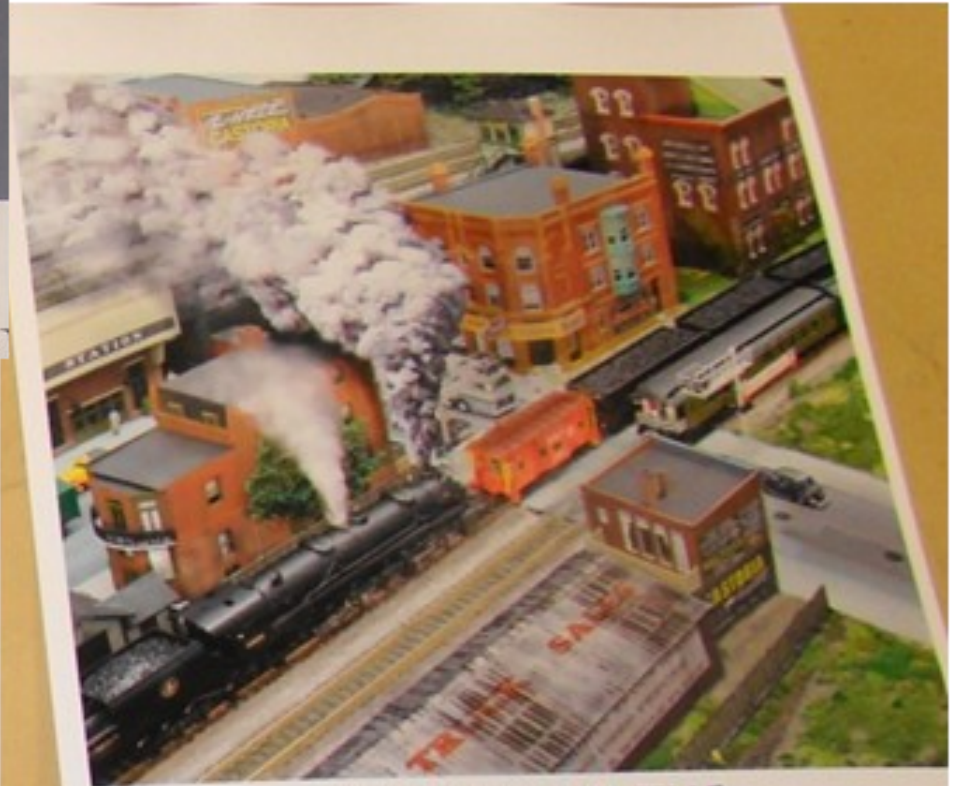
Article on Pages 4 and 5

Left: Rick Spano - Logging on the Winged Foot & Western Railway

Below: Tom Griffiths - Santa and the Coal Drag



Below: Prototype Photo by Joseph Rugarber - Colorado Railroad Museum – Golden



design for
Christmas card

SANTA AND THE
COAL DRAG

CONTEST
PHOTOS
Continued



Clockwise from Upper right: Prototype Photos:

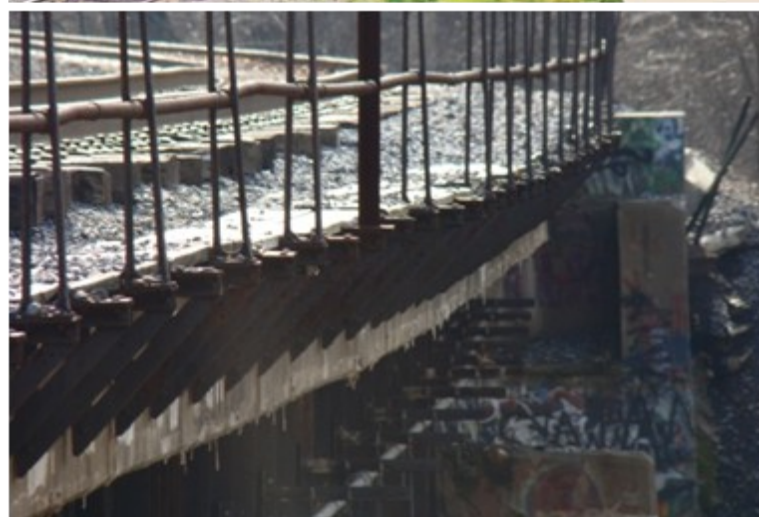
Rick Spano - NS SD-40E Locomotive at Galitzin, PA

Bill Grosse - Yardville, NJ Bridge, Long Side View

Joseph Rugarber - Promontory Point Utah

Bill Grosse - Rail with Character (2 piece entry) found at Yardville, NJ

Roger Thomas - East-bound on the NS Main in Lilly, PA



MAY MEET PREVIEW



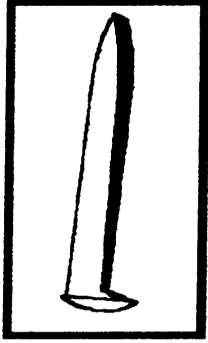
Above: This is one of several mountain scenes that can be found on the Scenic and Undecided.

Upper Right: Heavy covered hopper Traffic at Alpha Cement on the Neshanic River Railroad.

Lower Right: Bert Edwards appears to be having a great time operating on Jim Grill's Neshanic River Railroad.

Two great HO layouts will be open as well.





ACHIEVEMENT PROGRAM GOLDEN SPIKE AWARD APPLICATION FORM

PLEASE COMPLETE THIS APPLICATION FORM AND SEND TO YOUR REGIONAL OR DIVISIONAL AP CHAIR

Member's Name: _____ NMRA#: _____ EXP: _____

Address: _____ City: _____

State/Prov: _____ Country: _____ Postal Code: _____

Date Submitted: _____ Region: _____

The Golden Spike Award will be awarded to any NMRA member who has completed the Qualifications Checklist, obtained the necessary signatures and who does not hold MMR status. It will be administered by the regional and divisional AP Chairs. AP regulations and definitions apply for scratch building and super detailing. To qualify for the award the member must complete the following checklist, obtain the signature of the divisional AP Chair or another NMRA member designated by the divisional Chair. The divisional Chair will submit the signed form to the regional AP Chair who will issue the Golden Spike Award certificate.

QUALIFICATIONS CHECKLIST:

1. Rolling Stock (Motive Power & Cars):

Display six units of rolling stock either scratch built, craftsman kits or super-detailed commercial kits.

2. Model Railroad Setting (Structures & Scenery)

Construct a minimum of eight square feet of layout including scenery.

Construct five structures either scratch built, craftsman kits or super detailed commercial kits. If a module has less than five structures, additional structures separate from the scene may be presented.

LAYOUT PHOTO SPOTLIGHT



Ralph DeBlasi's Lehigh Valley - Wyoming Division

A Photo Introduction to Ralph DeBlasi's layout where he is modeling the Lehigh Valley railroad as it existed in the 1970's between Cementon, PA and Mountain Top, PA. The centerpiece and signature feature on the RR is the Lehigh Gorge modeled from Glen Onoko to Penn Haven. The RR is controlled by Digitrax DCC system and a signalling system is currently being installed using Bruce Chubb's CMRI. The layout measures 40 x 24 and has a 240 ft mainline run.



Ralph DeBlasi's Lehigh Valley - Wyoming Division



Ralph DeBlasi's Lehigh Valley - Wyoming Division



Ralph DeBlasi's Lehigh Valley - Wyoming Division



Why not bring a friend to the meet and share your hobby with them?

Let us know if there's a clinic you would like to see... or see again!

