

Train Orders

Official Newsletter of the New Jersey Division,
Mid-Eastern Region, National Model Railroad Association



May 2020

Volume 31 Number 3

No Travel Required For Our May Meet

By Bill Grosse

Everyone knows what the above title means . So I am not going into more detail on the reasons.

I do hope that everyone is following the guidelines and is remaining healthy.

We had a May 16th meet planned in Middletown, with our Division hosting the 8th Annual Joint Meet with the Garden State Division.

As we know, New Jersey will be on stay at home orders until at least May 9th, some areas till May 31st. Following those orders, we have cancelled a physical, non social distancing type meet for May.

The New Jersey Division Board Members have discussed possible options to try a Virtual Meet on May 16th. If we are able to set up the virtual meet, it will also continue with the Annual Joint Meet with the GSD, they are also interested in this option.

Both the NJ Division and Garden State Division will be having virtual meetings for April Board Meetings, using a service - FreeConferenceCall.com.

This is a free service, as the name applies, used for up to 1000 people to have a meeting, video conference, presentations, and more. It does not require you to have an account to use.

If we make a decision to use the service for a virtual meet, I will send out a link to use. Once you open the link, click the join button, which is only to join the meet. You may use desktop, laptop, tablet,

or phones. More information will be sent by email updates as decisions are made.

Concerning Our March Meet

The NJ Division Board was faced with making a decision, whether or not, to have our March Meet in Hamilton. We chose to take the cautious route, even though we weren't in government ordered stay at home mode. But, in the end there was no choice, Hamilton Twp. cancelled our hall rental 15 minutes after I sent the email update out.

We have a tentative date of June 6 to have a make up meet in Hamilton, but for now that has a slim chance of happening.

What I Did During Covid-19

Starting with this issue, and continuing for as long as it takes to include any member submitted items, we are adding a section called - What I Did During Covid-19. (See page 10)

Send us a photo, or a few, plus a short paragraph showing a model railroad project that kept you busy during the stay at home orders.

We will include these in the newsletter and email updates.

Along with this section, I would also like to send out an update every other week that has a link to our members model railroad layout videos or websites. Please send me your links/files



Next Division Meet

Saturday May 11, 2020
at Middletown, NJ Location
Is Canceled

Planning to try having a Virtual Meet
Beginning at 9 a.m. on May 16th

On line video clinics:

John Gallagher NJD
Something Creative
Fred Dellaiacono GSD
Making Toilet Paper Water

A Contest will not be held
More information will be sent
via e-mail

If not receiving e-mail updates,
Contact Bill Grosse at 609 532-3431
or njdiv.super@gmail.com

In This Issue

May Meet	1
Schedules	2
View From The Cab	3
Petition for Nomination	4
Model Contest News	5
Model/Prototype	6
50th Anniversary Gondola	7
Clinics	8
MR Really Runs Good	9
What I Did During Covid-19 Crisis	10
Golden Spike Appl. Form	13
Online Meet Instructions	14

Train Orders

Official Newsletter of the New Jersey Division
 Mid-Eastern Region, NMRA
 P.O. Box 8694
 Trenton, NJ 08650

[www.https://njdivnmra.org](https://njdivnmra.org)

Train Orders is published 5 times per year for the NMRA members and friends of the New Jersey Division. Online newsletter is always available at NJ Division website. Mailed hardcopy newsletter is \$15.00 per year. The opinions expressed do not necessarily reflect those of the Division. Products and publications mentioned in Train Orders in no way constitute an endorsement by the Division.

Contributing to Train Orders

Train Orders welcomes contributions from the New Jersey Division membership. Letters, articles, photos and other items may be submitted to the editor, Fritz Plenefisch, at fplen3@verizon.net or to 327 Sharps Lane, Hamilton, NJ 08610-1334. Please include return postage if you would like materials returned.

Deadline for the next issue: August 2, 2020

Superintendent

Bill Grosse
njdiv.super@gmail.com
 609 532-3431

Clerk/Secretary

Joe Zebrowski
 609 268-9451
trackjack@comcast.net

Director-Layouts and Newsletter

Chuck Higdon
 732 914-1161
vze5crrw1@outlook.com

Director-Editor

Fritz Plenefisch
 609 585-7660
fplen3@verizon.net

Director-

Tom Neukirchen
 609 584-5184
t.neukirchen@aol.com

Asst. Superintendent and Director of Clinics

John Gallagher
Johnv.gallagher39@gmail.com
 856 228-2239

Paymaster/ Treasurer - Bookstore and Door Prizes

Mike Prokop
njwrr@aol.com
 609 586-9818

Director-Contest Chair

Jack Menaker
 732 908-6771
jackmenaker@yahoo.com

Division AP Chair

PJ Mattson, MMR
 856 467-0421
pjmattson@comcast.net

Visit us at <https://njdivnmra.org> and join us on
 Groups at <https://groups.io/g/NJDivNMRA>

Schedules

NJ Division-Garden State Joint May Meet Is Canceled

Planning to have a virtual (On Line)
 Beginning at 9 a.m. on May 16th

Next Board Meeting

Tuesday August 18, 2020, 6 p.m.
 Host-Tom Neukirchen's home
 Please let us know if you plan to attend
njdiv.super@gmail.com

NJ Division September Meet

Saturday September 12, 2020
 Lacey United Methodist Church
 203 Lacey Road
 Forked River, NJ 08731

Joint NJ Division/ Philadelphia Div. Meet

Joint November Meet
 Saturday November 7, 2020
 Brandywine Town Center

Mid-Eastern Regional Convention

October 15-18, 2020
 Crown Plaza: Charlotte Executive Park
 5700 Westpark Drive , Charlotte, NC 28217
www-http://carolinasouthern.org/MER2020leaders.html

NJ Division Area Hobby Shops

* AAA Hobbies & Crafts

706 N. Whitehorse Pike, Magnolia, NJ 08049
 (856) 435-7645
www.AAAHobbiesandCrafts.com

* Sattler's Hobby Shop

14 Haddon Ave.
 Westmont, NJ 08108
 (856) 854-7136

* The Train Room Online Store

www.thetrainroomNJ.com
 e-mail thetrainroomnj@msn.com

* Trainpops Attic

400 Mill Street, Bristol, PA 19007
 (215) 788-2014
<https://trainpopsattic.com>

* Yankee Dabblers - Track 33

101 W. Kings Hwy, Bellmawr, NJ 08031
yankeedabblers@aol.com

* Offers discount to NMRA members.
 Must show Current Membership Card

Membership Information

Any person who is a member of the NMRA and lives within the boundaries of the NJ Division as defined by the NMRA is also a member of the division. Non member guests are welcome to attend three of our meets, after which they will be asked to join the NMRA.

NJ Division Annual Activity Fee:
 \$10.00 (optional and includes 5 meets) or individual meets \$5 at the door.

First time guests, no charge!

National Model Railroad Association
 P.O. Box 1328 Soddy Daisy TN 37384-1328
www.nmra.org

View From The Cab

By Bill Grosse, Superintendent

The View From My Cab, and yours, must be similar to a train crew sitting in a siding waiting, and waiting, for something they can't see or hear to come by them. At least they might get to leave at the end of their legal number of hours on board. We however don't know when this view will end.

Please stay healthy, both physically and mentally. I want to see everyone of you once this current situation gets to a point where we can actually do so.

Nominations and Elections

May is the month we start nominations for our Board of Directors. The Petition for Nomination Form is included with this newsletter, and by email updates. *See Page 4*

This year we have to vote for three members to the Board. Two of the three incumbents, Bill Grosse, and Joe Zebrowski, will be running for re-election, Chuck Higdon still says he is moving out of the Division. We need one new face on the Board at a minimum, so you can consider putting your name in too. New ideas and perspectives keep an organization current.

If you would like to have your name on the ballot in August, print and fill in the petition, included in this newsletter, with the required information, and send it in.

Special Note For Petitions

Due to the stay at home orders in effect, acceptable signatures for petitions will include electronic signatures.

If you plan to run for a Director position, fill in the petition as normal, then ask five active NMRA Members of the NJ Division to send you an email with the following:

First & Last Name,

NMRA Member Number & Expiration Date

And a line stating - this email nominating [Candidate Name] for election to the NJ Division Board of Directors, shall serve as my electronic signature.

Attach five email nominations/signatures to your petition and send to the Nominations and Elections Chairman, as shown on the petition. The Board of Directors will be using an electronic voting service for the upcoming and future elections. There will still be an option to use a paper ballot for everyone that receives the hardcopy newsletter. There is an option to "Vote For Up To Three", which includes nominated and write in Candidates.

Conventions and Meets

The NMRA has cancelled this years Annual Convention and National Train Show.

Presently the **MER Convention**, Carolina Special - Look South In 2020, sponsored by the Carolina Southern Division, is still on for October 15-18 in Charlotte, NC.

If you would like to be a Clinician for this convention, contact them at:

www-http://carolinasouthern.org/MER2020leaders.html

Then find info for the Clinic Chair.

The **NER 2020 Convention**, Mill City 2020, in Westford MA, October 9-12, is still on. See - millcity2020.org

Our next regularly scheduled meet after May will be **September 12, in Forked River.**

Hope we can have group meetings by then.

Election results will be announced, and followed by Officer elections, at the September meet location, or through a virtual meet.

Jack says the contest schedule will continue where we left off, which means the Boxcar Challenge will be in September. If we can't have an actual in person meet here, the Boxcar Challenge will move to our next NJ Div. meet.

The Philadelphia Division will be hosting us for the **November meet, in Wilmington, DE. Date TBA.** This means no NJD contest.

We will be back at Grace Church in **Merchantville, NJ on January 9, 2021.** We will again be hosting the Philadelphia Division. If we haven't had the Boxcar Challenge yet, it will be at this meet.

Hardcopy Printed Newsletter

This won't affect too many of you, but we need to raise the fees for the hardcopy newsletter. It currently costs more than is received. We will only be making 1 version of about 14-16 pages Color emailed & B&W print. The fee will be \$15 per year starting with August renewal for January 2021 edition. No new print subscriptions will be accepted from here on.



Petition for Nomination as a Director of the New Jersey Division For the term September 2020 through September 2022

Candidate's Name (Print legibly): _____

Candidate's NMRA member number: _____ Expiration Date: _____

Petitioners' Signatures NMRA member number: _____ Expiration Date: _____

1. _____
2. _____
3. _____
4. _____
5. _____

As a candidate for the position of Director of the New Jersey Division, NMRA I hereby certify that I am a member in good standing of the New Jersey Division, NMRA and that to the best of my knowledge, all signers of this petition are members in good standing of the New Jersey Division, NMRA.

Candidate's Signature _____ Date _____

----- Cut along this line -----

The New Jersey Division, Mid-Eastern Region, National Model Railroad Association, will be holding an election of Directors for the term September 2020 through September 2022. All regular and associate NMRA members living within the boundaries of the New Jersey Division are eligible to be candidates for the annual election.

In order to have your name appear on the ballot, as specified in the bylaws of the NJ Division, you must submit a signed petition indicating your desire to be a candidate and have it signed by 5 other regular or associate NMRA members who also reside within the boundaries of the NJ Division. Their NMRA membership numbers and expiration dates must be included. **Note:** Rail Pass members are **not eligible** to be a candidate, nor to be a signer of this petition.

When complete, mail your petition to the Chairman of the Nominating Committee:

Mr. Chuck Higdon
Attn: NJ Division Election Committee
1266 N. Maple Ave.
Toms River, NJ 08755

All petitions must be received by August 1, 2020 in order to be included on the ballot. All petitions will be verified by the Nominating Committee.

This is the official petition form. If you are reading this online, please print this page and fill out the form. If you are reading this in hardcopy, simply copy and complete this page or use this original. When completed, please mail it to the address shown.

Along with your nominating petition, please include a photo and a short letter of introduction to let the members know why you should be elected to the Board of Directors. This information will be sent with the ballot for members to use when considering for whom to cast their votes.

In accordance with the By-Laws of the New Jersey Division, MER-NMRA: Ballots will be mailed with the September Train Orders hardcopy edition by August 30, and ballots must be received by September 14, 2020. Electronic ballots will be used by the NJ Div. Board of Directors for everyone with a valid email address on file. Results will be announced during the NJ Division meet on September 19, 2020. Any further questions can be directed to the Chairman of the Nominating Committee, Chuck Higdon at 732-914-1161 or email - vze5crrw1@outlook.com.

Model Contest News

Jack Menaker, Model Contest Chairman

Well, this sucks. Here is the March 2020 Contest column and we do not have a WINNER!

Thanks to the Chinese who make cheap lousy products but good cuisine (at least the American version), the Corona Virus has shut down a very important meeting. I am talking about our March 2020 NMRA Meet.

Since we are all quarantined in the house, it gives us time (which we never have enough of), to work on our hobby.

I have been working on the Jersey Mercantile RR, building some structures for me and an N scale buddy.

We will be back as soon as possible. When we have our next meet, the contest will be the delayed Boxcar Challenge.

We will then continue with the Meet after with the contest being a detailed Industrial Structure (kitbashed OK).

After that Meet, we are looking for more challenges. Suggestions heartily welcomed.

What is the Boxcar Challenge you may ask? The rules are; Size Matters!

If you model O scale, the diorama must be 20" x 12"

If you model HO scale, the diorama must be 10" x 6"

If you model N scale, the diorama must be 5" x 3"

It must be recognizable as a former boxcar!

It can be all beat up.

It must be identifiable as a former boxcar

You cannot make furniture using the boxcar boards and pieces.

Other than the above rules, the sky is the limit. Use your imagination, and good luck.

Past March, the next contest will be a

detailed Industrial Structure. This can be a kit (simple plastic or complex craftsman). It can also be kitbashed or scratch-built. For whatever you bring to present, please be prepared to explain to the Contest Chairman what it is. (scratch built, kitbashed [name the kits used], regular kit)

In the next newsletter, I will announce the contest for the following year.

Please be aware that we will have another 12" x 12" Diorama contest.

We are also looking for a few new topics to use for the contests. One suggested so far is a weathered and/or detailed locomotive.

Please offer me some suggestions to challenge the members.

Thank you

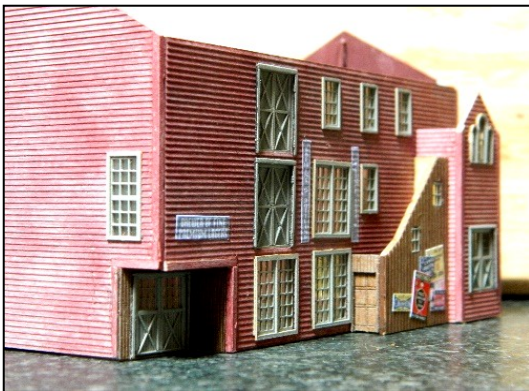
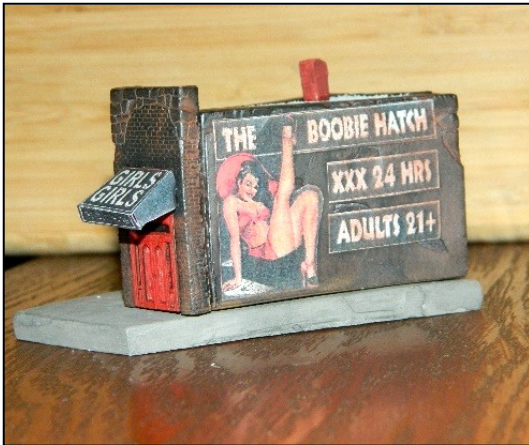
Jack Menaker, Contest Chairman



Photos continued on page 5

Model/Prototype Motor Rail Bus

Jack Menaker and Fritz Plenefisch



Jack Menaker Photos



West Jersey Chapter-NRHS Collection

The Stone Harbor Railroad operated between Cape May County Court House and Stone Harbor, NJ. The railroad used two 30 foot long, 25 seat, 40 hp Mack gasoline engine powered Rail-Motor-Buses purchased in 1921 from Philadelphia's J. G. Brill Co .



50th Anniversary Gondola Cars

by Mike Prokop

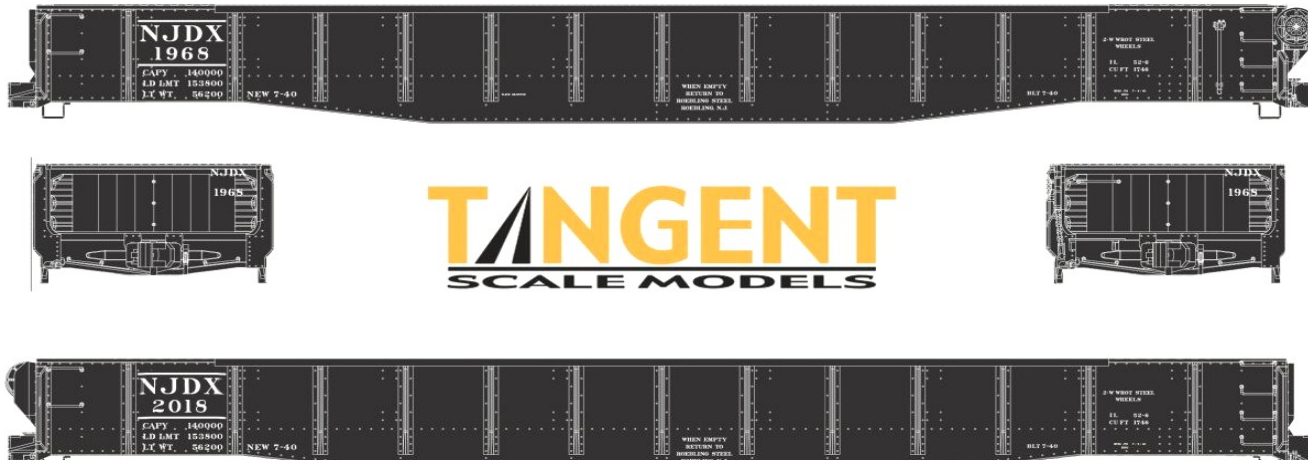
So, just a quick review about the cars. They are \$35 each, or a set of two for \$65. Car numbers are 1968 and 2018, which are the years that the New Jersey Division was founded and the year we celebrated our 50th anniversary. The gondola is from Tangent Models and is a superb model of a 70 Ton 52'6" Riveted Drop End Gondola. The placement of the brake wheel on the side is an identifying feature of a drop end Gondola.

They're ready to run out of the box and come with Kadee couplers.

We acquired 216 units with equal amounts of the two car numbers. Between pre-orders and sales, almost half are sold out so don't wait too long to get yours. See me at the division bookstore during the meet to buy some cars. Cash or your check will consummate the deal and you'll be hauling stuff around your layout in no time!

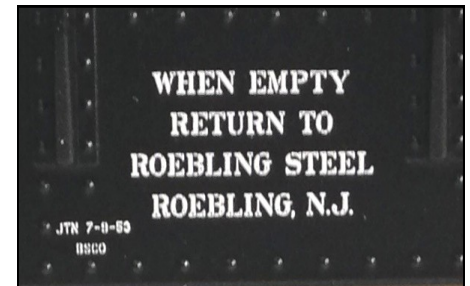
These are not only excellent looking and beautifully running cars, but, for a car obviously not decorated for a prototypical railroad, they do have the look of an authentic gondola that you might see in any train consist from the 1930's to the 1980's.

To order by mail see the Order Sheet on page 14. USPS Priority Mail postage is: \$9 for one car and \$10.75 for two cars.



The Reporting Marks "NJDX" for this car identify the owner as the New Jersey Division and the "X" designates a Private or Non-railroad owner.

This Stencil indicates the Gondola is in Assigned Service to Roebing Steel. It must be returned to Roebing after its load has been delivered.



Clinics for the May 2020 Joint NJ Division and Garden State Division Meet

John V. Gallagher, Clinics Director, NJ Division

We will have clinics during the May 2020 Joint Meet! How can you attend when the State prohibits meetings. We will have our meeting electronically while we distance ourselves by staying home and connecting through our computers, i-Pads, tablets, or smart phones. Many of you know of children attending school while at home using technology.

We can use similar technology. Some of you know of the program Zoom. We will use a similar program found at [and named] **FreeConferenceCall.com** so go to that web site and explore. If you feel lost, have your student grandchild or nephew join you to do the exploration. I am still learning so we will all be pioneers and explore, play with and learn how to use this technology. I have to

learn the techniques. You need to learn how to connect and watch. For now, that is sufficient.

One clinic will be presented by a Garden State Division member. The NJ Division will present the other. See Superintendent Bill Grosse's article for more information. This is truly a Work in Progress. Onward Pioneers of the NJ Division! See you on the Internet at the May Meet.



New Jersey Division 50th Anniversary Gondola Order Form

Tangent Scale Models Bethlehem 70 Ton Riveted Drop End Gondola in HO Scale

All cars are ready to run

We ordered the car in two road numbers, 1968 & 2018 to commemorate our 50th anniversary.

The car will be NJDX black body with white lettering and data for the 1950's.

The cars will cost \$35.00 each or a set of both numbers for \$65.00

**We are currently accepting orders .
Your order requires a check made payable to the NJ division**

Name_____

Address_____

City, State and Zip code_____

Telephone_____ Email_____

See Tangent website for more info support@tangentscalemodels.com

Return this form to NJ Division P O Box 8694 Trenton, NJ 08650

See page 6 for car picture and details

SO YOU THINK YOUR MODEL RAILROAD RUNS REALLY GOOD!

By Mike Prokop

Fact is we've all spent lots of time in the train room building our model railroad empires. Probably after years of research, planning and procrastination, the construction began, your dream layout became a reality. You listened to and mostly followed the knowledge and wisdom of the masters while adding your expertise and creativity in building your creation. You're proud of the job done and how well the trains look and how great they run on your layout!

So now your layout is either "done" (if one ever is) or is far enough along to have friends over for operations (OPS). Keep in mind during construction, you assiduously ran and tested all functions of your railroad. At this point you're satisfied! The track work is aligned and smooth running, turnouts perform perfectly, curves and clearances flow and function nicely. The electrical and electronics work flawlessly, you can't believe how well trains run around the layout without uncoupling, loss of control, or issues experienced on other's layouts. You're feeling good! Real good!

Now all set for OPS. Car cards, waybills, train orders, passenger and freight schedules also the operating rules meticulously created. All set to go as you await the guests for your first OPS! This is true but the so-called names have been deleted to protect the innocent! Yeah right! Innocent, ha-ha!

The guests arrive, or should I call them... Testers! They may be called something else by the end of the OPS session. You dish out

assignments, give a short preamble on how the session should go and start the clock and schedule. The first indication of trouble is your operators are asking, where is this town or that yard or station, and which way is east and which is west. You realize more signage is needed, possibly on the layout fascia. No problem. You know these things about the layout, but these guys who have visited (not operated) many times before, must not have paid attention when you explained how, what, and where your railroad is located and what it represents. It's a good thing you're patient and forgiving!

Now the real fun starts. Trains begin to move at the hands of your operators, or in one case, where one of the trains doesn't move. It ran fine yesterday! You ran it yourself, it's good, what's the problem? You're thinking that this guy's an idiot, can't run trains, but wait, he's your best friend! You take over and it won't run! There's a dead section of track. Can't believe it, but it worked fine yesterday you lament. Okay, put it on the items-to-be fixed list.

Other trains are running now, and things are moving along when you hear your name called out. Seems a derailment is constantly occurring over this section of track. Although there had been no problem running there before, you put it on the repair list. While checking that out, your name is shouted out again. A clearance problem with some scenery. Another for the list. Next thing you know the repair/fix list is building. Track issues, broken turnout, low

coupler on boxcar, train order typo, engine won't respond to commands, car card mismatches, and more! At this point, the last thing you want to hear is your name being called out!

The session mercifully ends. Sitting in your chair flabbergasted and exhausted! As the operators gather around, you prepare to hear nasty comments and negative feedback about the session. But you start hearing things like, "great session," "had an enjoyable time," "couple problems but shouldn't be too bad to fix," "when's the next session, looking forward to it." You think, that's cool. You immediately feel exhilarated. Your friends leave, they truly are friends, and you can't wait to get to fix things and re-stage the railroad for the next session.

So, you think your railroad runs really "good?" It may run "good," but it won't run "really good" until your friends (operators, testers, etc.) come over and operate it, of course, after you fix all the issues they find. So, let your friends and others loose to operate your railroad, and after a few years of OPS, your railroad will truly "RUN REALLY GOOD!" I guarantee this method works, it's been my personal experience. Try it.

However, I can't offer any help to you for when visitors come to see your railroad and of course, then the weird things happen. Crazy derailments, a sound decoder is silent but isn't on mute, cars uncouple, etc. I don't know why it happens or how to fix it other than to say, "model railroading is fun!" Deal with it!



What I Did During Covid-19 Crisis

An Ongoing Series As Related By Members of the NJD

The RIP Track By John V. Gallagher

During these times of self confinement, the proactive person sees opportunities. I see them as times for doing projects on my O scale traction layout that were part of my "I'll do it tomorrow or sometime." Sometime is now!

My current layout project involves planning and building an interchange yard where my trolley line, the Mongaup Valley Railway, interchanges freight with the New York, Ontario and Western railroad. This took place in Sullivan County's Catskill Mountains, about 100 miles northwest of New York City. Along with track work, I needed rolling stock for my freight trains. I found four freight cars, two box cars, a flat car and a tank car in one of the estate sales at a Division meet. These old, historic, kit built cars went for a good price, but I knew they needed work. They will go to the RIP track.

As a short review, the RIP track stands for "repair in place," a location in a railroad's maintenance yard where minor repairs occurred, ones that needed immediate attention before the car could return to service. Many repairs attend to wear and tear tasks such as replacing brake shoes, bearings/journals, wheel sets, or safety hazards such as broken grab irons, stirrup steps, etc. Even boxcar doors needed replacement due to damage. RIP track repairs were made to home road and visiting rolling stock. I need to do research regarding the rules and procedures

for such repairs of visiting equipment such as approval and financing

One box car and the flat car need a change of couplers to Kadees. The tank car needed ladder repairs, the handrail around the tank, a platform near the dome, and couplers. I will also add brake details underneath, plus stirrup steps, additional grab irons, new wheel sets, placards, Dull Cote and weathering. It can



enter service with the first set of tasks.

The second box car needs new doors. There are other details such as stirrup steps, replace/repair the hand brake, redo the underbody adding brake components and piping, grab irons, weights, replacing missing roof ribs, roof walk and weathering.



Now, how do I do the RIP track? I don't have a spot on the layout yet. My work on the My RIP track is my workbench. It is yours too. We do the work of the RIP track constantly. [As an aside, in Model Railroader's publication of 2007 titled *How To Build Realistic Layouts: Freight Yards*, you will find an excellent article on RIP tracks, pp. 74 – 77.]

I completed the first stage of RIP track maintenance on the tank car. I find that I need to change the brass wheel sets. They meet NMRA gauge specifications but the deep flanges pound on the spikes on my hand laid code 100 rail!

My work on the boxcar continues. I replaced the doors. The original doors are stamped sheet metal Youngstown doors. They were out of square and didn't stay in the door tracks. I decided, after some research, to replace them with scratch built Superior doors, which are easier to fabricate. I also replaced the missing roof ribs. My next step includes fabrication of the door hardware, a challenging task to make these small items.

Why should I do work on these old cars? First, they were cheap and available. Second, they were the work of another modeler, now deceased. At sometime in the past, that modeler did his best to build these models, using his skills to complete these kits, detail them, apply decals after painting, and operate them on his layout. They are not perfect. I noticed some errors in the construction that I can correct. Others I will live with. They will

meet my needs as part of my fleet of freight cars during operating sessions. I will smile and remember our modeling colleague as I back them into a siding to deliver lading.

Be safe and be well. Go work on that layout or that model. Take photos. Make notes about how you did the process. Write an article for a model railroad magazine. How about *Train Orders*? Put it together for a clinic. Need help in writing or clinic preparation? Ask me! And, have fun.

See you sometime in the future when it is safe.



Home at the Workbench
 By Mike Prokop

While I was sequestered recently due to you know what, I spent much more time down in my layout room working on many projects. Mostly scenery, structures and details.

Many details that I'd been procrastinating working on because they can take time, lots of time! However, one project I was pondering for a few months and finally was able (able... meaning I got motivated and had the time) to complete is this waterline model of a Derrick

Spud Barge. It's a craftsman kit, has nothing to do with potatoes, and is made by Seaport Model Works.

It represents a generic vessel, not a prototype, circa 1950. It's 42 feet long and its equipment is run from a coal-fired boiler with machinery to generate electricity. Its purpose is to perform all sorts of functions around the harbor such as dock and bulkhead repairs, loading/unloading "stuff," salvage, and any other harbor work you can think of. I built the kit per box instructions but added many details. You can see figures, deck debris, coal for the boiler. It's there, but you can't see in the photo the LED lighting in the deck house to illuminate the boiler and other interior details.

In my case it will be tied up to the bulkhead next to the Reading RR's Linden Street car float facility in North Camden. Most of you know this is my Free-mo module of which I model the Reading's Linden Street Freight Station. In the one photo shown here the model sits on my work bench pretty much complete waiting to get its feet "wet!" The other photo shows it working in the Genesee River near Coldwater, NY (on my layout). It'll be on the Free-mo module next time I set up for a show. Hope you all are healthy and modeling your brains out!



Mike Prokop photos



My Covid-19 Projects
 By Bill Grosse

A New Layout Section

I helped save a section of John Rahenkamps CL&W RR. I have his Karlsbad Yard and Industrial area. I am working to make this fit into an area to stay permanently, with an S shaped bridge to connect my Free-mo Modules to. I couldn't bear to see Karlsbad get destroyed when I had a space most of it could fit. I have added additional track, 15 car spots worth, and a switching lead for the yard.

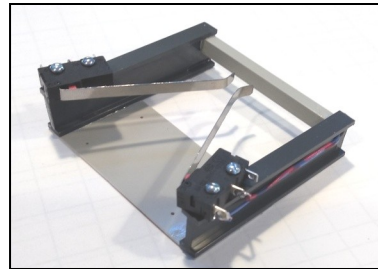
To thank John for all of the Ops I attended, and to honor his CL&W RR, the yard will be named 'J.R. CLAW Yard' and the industrial area will have a strong connection to the Karlsbad name.



A Durable Low Cost Car Detector for Hidden Areas

I needed two car detectors for hidden track in my new layout section. So I dug through all of my collected treasures to find a cheap, durable, easy to maintain, no programming needed project. It is not small, but it won't be seen, and it works well. I figure it cost about \$2 each. The switches were only \$0.80 each from AllElectronics.com

I have two long arm snap contact switches mounted on scrap styrene pieces, track goes over a thin base that keeps two switches in line, the cross piece at the end acts as a bumper. The switch arms are on each side of a car with a curve bent into them to prevent snagging. The switches activate Smoke Stack lighting for one track, and a welder circuit for the other, when lit the car is at the end.



My First Two Projects Were Big, To Get Me Ready For Going To 1:87 Micro Size Next

Many of you have seen my 1:87 Radio Control VW Van. That was purchased completely built.

I am now going to begin to build my own Radio Controlled 1:87 Fire Engine. Wish me luck and good eyesight.

I received all of the electronics boards, batteries, drive and suspension from a company in Germany, and I ordered Fire Engine sections from Shapeways that I hope to have soon.

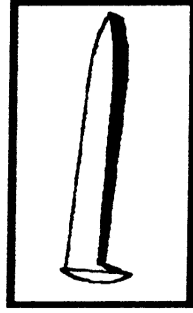
The picture below has all of the RC components I will be using, the controller, and instructions in German.

For size comparison, the wheels are HO, the 4 small boards above them are headlights and taillights. All of this is supposed to fit!



All photos Bill Grosse





ACHIEVEMENT PROGRAM GOLDEN SPIKE AWARD APPLICATION FORM

PLEASE COMPLETE THIS APPLICATION FORM AND SEND TO YOUR REGIONAL OR DIVISIONAL AP CHAIR

Member's Name _____ NMRA#: _____ EXP: _____

Address: _____ City: _____

State/Prov: _____ Country: _____ Postal Code: _____

Date Submitted: _____ Region: _____

The Golden Spike Award will be awarded to any NMRA member who has completed the Qualifications Checklist, obtained the necessary signatures and who does not hold MMR status. It will be administered by the regional and divisional AP Chairs. AP regulations and definitions apply for scratchbuilding and superdetailing. To qualify for the award the member must complete the following checklist, obtain the signature of the divisional AP Chair or another NMRA member designated by the divisional Chair. The divisional Chair will submit the signed form to the regional AP Chair who will issue the Golden Spike Award certificate.

QUALIFICATIONS CHECKLIST:

1. Rolling Stock (Motive Power & Cars):

Display six units of rolling stock either scratchbuilt, craftsman kits or super-detailed commercial kits.

2. Model Railroad Setting (Structures & Scenery)

- Construct a minimum of eight square feet of layout including scenery.
- Construct five structures either scratchbuilt, craftsman kits or superdetailed commercial kits. If a module has less than five structures, additional structures separate from the scene may be presented.

3. Engineering (Civil & Electrical)

- Three types of trackage required (e.g. turnout, crossing, crossover, etc.). All must be properly ballasted and installed on proper roadbed. Commercial trackage may be used.
- All installed trackage must be properly wired so that two trains can be operated simultaneously (e.g. double track main, single track main with sidings, and block or command control).
- Provide one additional electrical feature such as power operated turnouts, signaling, turnout indication, lighted buildings, etc.

Witness: _____ Name: _____ NMRA #: _____

Regional AP Chair: _____ Region: _____

New Jersey Division - Garden State Division Virtual/Online Joint Meet Saturday May 16, 2020 Starting At 9 a.m.

We'll begin with opening comments at 9 a.m., this will be followed by the GSD Business, the Meeting and Elections at approximately 9:15 a.m., which should last about 15 minutes.

Two clinics will follow;

First will be NJD's John Gallagher with his clinic "Something Creative", John offers no further details, it is a surprise,

Second will be GSD's Fred Dellaiacomo explaining "Toilet Paper Water for Rebuilding My Waterfront"

After the clinics and closing comments, we hope to have some video or photo displays available to view following the clinics. These are on the same conference site used for the meet, which will stay open for the remainder of our available six hours that we have for free.

Important Information

For Accessing The Virtual Meet

We are using FreeConferenceCall.com

You can use any laptop or desktop computer, tablets or iPads, and Android or iPhone smartphones. If you don't have any of those, you can dial in on any phone to listen in.

If your computer is without a microphone, you can log in to see and hear the meet, if you need to talk to us, mute your computer speakers, then use a phone to dial in so you can talk.

Ensure your device has allowed app access to microphone and camera, also allow notifications from FreeConferenceCall.com.

Type in FreeConferenceCall.com, allow app to open.

Do Not Click To Make Your Own Account, you do not need to have one. You only need to click Join Meeting.

Input your Name and Email Info, and the Online Meeting ID Code which is between the brackets [njdivsuper]. After that you need to enter the access code. The access code will be sent to you by email shortly.

Once you have entered, you will see video squares of people in attendance and a large section where the presentation will be. At the bottom left you will see three icons; a microphone [used to turn your mic on or mute], a telephone handset [to connect by audio], and a camera [to connect video].

Begin by clicking the telephone handset, this will get you connected. Next click the camera, you should see yourself in a video square. If there is no presentation in progress the host will welcome you, so you know you are connected. If you become disconnected at some point, follow the above information steps to reconnect.

We ask that you do the following;

* Press the microphone icon to mute, except if needing to talk, but, please don't try to talk in the middle of a presentation as it will interfere with the -audio of the presenter,

* Don't have a bright light behind you,

* If you are wearing something we shouldn't see, don't stand up in front of the camera,

* Check your background, move things you don't want seen and don't have anyone walking behind you,

* If talking, do not have microphone too close to your mouth, to prevent distortion of the sound.

* If you need to send information during a presentation, there is a chat section to type and send a message to the host. If absolutely necessary, the host will interrupt the presenter.

Testing Service Prior To The Meet

There will be periods of time for you to sign in and test the FreeConferenceCall.com service.

This will likely be Thursday and/or Friday night before the meet, in the area of 7pm through 8 to 8:30pm.

More information about this will be sent in the email with the access code you will need to use.

On the day of the meet, NJ Division Superintendent Bill Grosse will have the meeting service open by 8:30 a.m. to allow time to make sure you are connecting properly, if needed.

**If you do not receive the NJ Division
 email updates, contact -
 njdiv.super@gmail.com - to request
 meeting access, asap.**

Please Bear With Us If Any Issues Happen, This Is
 Our First Virtual Meet, And We Are All Still
 Learning To Live Virtually!