

Train Orders

Official Newsletter of the New Jersey Division,
Mid-Eastern Region, National Model Railroad Association



May 2021

Volume 32 Number 3

The Garden State Div Is Hosting Us For The May Meet

By Bill Grosse

On Saturday May 1, 2021 the Garden State Division will be hosting us for our 9th Annual GSD/ NJD Joint Meet.

The GSD will use the Free Conference Call.com service, with sign in starting at 8:30am and the meet beginning at 9 a.m.

At the beginning of the meet the GSD will have their usual brief Annual Business Meeting. Chuck Diljak has reached his term limit as President, and deserves a “Job Well Done” from all. Mark Moritz will be the next President and will host the rest of the meet.

There will be two clinics presented, one by GSD’s Tom Wortmann - ‘Converting Older DC Diesels to DCC’, and the other by NJD’s Glyn Thomas, MMR - ‘Modeling the CNJ in the Lehigh Valley’. See Assistant Superintendent John Gallagher’s Clinic Column for more details.

Between the two clinics, there will be a Bring and Brag Session, for attendees to show pics/videos of, and explain what work has been done to achieve the final result being shown. NJ Division members are encouraged to participate in this session, and show some of their work.

Nominations & Elections

It is time again, time for the “Petition For Nomination Form” to go out. There is a copy in this

newsletter and it will be included in the email update.

If you are interested in becoming a member of the Board of Directors, fill out the Petition and send it to the address on the form, before the deadline. Elections will be held at the September meet.

To meet the signatures requirements, send five current NMRA Members in the NJ Division, an emailed copy of your filled in form, ask them to sign it and send their copy to the address shown.

There will be at least one opening this year on the Board, to fill an unexpired term. So put your name in to the nominations list and give it a try.



Bill Grosse Winner of the May Virtual Contest



Next Division Meet

Saturday May 1, 2021

9 a.m. to 12:00 noon

This will be a Virtual Meet

Contest: This is a Virtual Contest :

Freight Yards. From small local yards to large regional yards.

Clinics:

Glyn Thomas, MMR .“Modeling the CNJ in the Lehigh Valley,”

Tom Wortmann, on “Converting Older DC Diesels to DCC”.

In This Issue

March Meet.....	1
Schedules	2
View From The Cab	3
Model Contest News	4
Clinics	8
Do You Remember	9
A Few Handy Gadgets	10
Anniversary Gondola	11
Petition For Nomination	12
Golden Spike Appl. Form	13
Gondola Order Form	14

Train Orders

Official Newsletter of the New Jersey Division N. J. Division,
 NMRA

P.O. Box 276
 Crosswicks, NJ 08515-0276
<https://njdivnmra.org>

Train Orders is published 5 times per year for the NMRA members and friends of the New Jersey Division. Online newsletter is always available at NJ Division website. Mailed hardcopy newsletter is \$15.00 per year. The opinions expressed do not necessarily reflect those of the Division. Products and publications mentioned in Train Orders in no way constitute an endorsement by the Division.

Contributing to Train Orders

Train Orders welcomes contributions from the New Jersey Division membership. Letters, articles, photos and other items may be submitted to the editor, Fritz Plenefisch, at fplen3@verizon.net or to 327 Sharps Lane, Hamilton, NJ 08610-1334. Please include return postage if you would like materials returned.

Deadline for the next Train Orders issue: August 8, 2021

Superintendent

Bill Grosse
njdiv.super@gmail.com
 609 532-3431

Clerk/Secretary

Joe Zebrowski
 609 268-9451
trackjack@comcast.net

Member Contact Chairman

Geert Marien
 732 757-1061
geert@mindspring.com

Director-Editor

Fritz Plenefisch
 609 585-7660
fplen3@verizon.net

Director-

Tom Neukirchen
 609 584-5184
t.neukirchen@aol.com

Asst. Superintendent and Director of Clinics

John Gallagher
Johnv.gallagher39@gmail.com
 856 228-2239

Paymaster/ Treasurer - Bookstore and Door Prizes

Mike Prokop
njwrr@aol.com
 609 586-9818

Director-Contest Chair

Jack Menaker
 732 908-6571
jackmenaker@yahoo.com

Division AP Chair

PJ Mattson, MMR
 856 467-0421
pjmattson@comcast.net

Visit us at <https://njdivnmra.org> and join us on
 Groups at <https://groups.io/g/NJDivNMRA>

Schedules

NJ Division May Meet
Saturday May 1, 2021, 9 a.m. to Noon
This will be a Virtual Meet
Check in starts 8:30 a.m.

Next Board Meeting

August 24, 2021 7:00 p.m.
 Contact njdiv.super@gmail.com
 For access information if you wish to participate.

Next Division Meet

Saturday September 18, 2021
 More information to follow

2021 NER - NMRA Convention Mill City 21, October 8 - 11 Westford MA

The Northeast Region is rescheduling
 Mill City 2020's convention to 2021.
 Visit - MillCity21.org - for more updates

2021 MER - NMRA Convention
Mount Clare Junction, Oct. 21-24
 Marriott Delta, Hunt Valley, MD (Baltimore)
 Search - Mount Clare Junction on You-
 Tube.com to see a preview and other
 information as it is added.

NMRA 2021 National Convention
Rails By The Bay July 4-11
Santa Clara, California
This Convention Has Been Canceled
 Check nmra.org for 2022 NMRA
 Convention information

NJ Division Area Hobby Shops

* **AAA Hobbies & Crafts**
 706 N. Whitehorse Pike,
 Magnolia, NJ 08049
 (856) 435-7645
www.AAAHobbiesandCrafts.com

* **Sattler's Hobby Shop**
 14 Haddon Ave.
 Westmont, NJ 08108
 (856) 854-7136

* **The Train Room Online Store**
www.thetrainroomNJ.com
 e-mail thetrainroomnj@msn.com

* **Yankee Dabbler - Track 33**
 101 W. Kings Hwy, Bellmawr, NJ 08031
yankeedabbler@aol.com

* **Offers discount to NMRA members.**
Must show Current Membership Card

Membership Information

Any person who is a member of the NMRA and lives within the boundaries of the NJ Division as defined by the NMRA is also a member of the division. Non member guests are welcome to attend three of our meets, after which they will be asked to join the NMRA.

NJ Division Annual Activity Fee:
 \$10.00 (optional and includes 5 meets) or
 individual meets \$5 at the door.

First time guests, no charge!

National Model Railroad Association
 P.O. Box 1328 Soddy Daisy TN 37384-1328
www.nmra.org

View From The Cab

By Bill Grosse, Superintendent

As we arrive in May, we reach our fifth meet in our election cycle, time to start thinking about Nominations, then into Elections, for Board of Directors positions. Once you are a NJ Division Director, it is time to think about putting your name in to be elected an administrative officer.

On the outside it seems like a lot of work, time, and headaches, but once you are there you may find that it is just right for you. You can express your ideas, try to set some goal for the Division, some idea you may have that will be enjoyed by the whole of the membership. You won't know until you try, and after one term you can step down if it is not for you, but you gave it a try, and there is a good chance the members respected you for what you have done.

This year there is an unexpected opening to fill an unexpired term of one member of the Board. So we will need at least one member to step up to be elected.

This opening will also impact the outcome of the election of Administrative Officers. We will be looking at a new arrangement of leaders.

I am asking all members to please support the Directors that are in the middle of their terms, and any re-elected or newly elected in September. Also continue this support to the Administrative Officers - Superintendent, Assistant Superintendent, Paymaster, and

Clerk as elected by the Board.

I am the cause of the unexpected vacancy, cutting my term of Director short by one year (or more depending on rules), and ending my position as Superintendent in September, if allowed, depending on if rules allow me to finish my term, or do I have to stop immediately in mid-May.

I have planned to keep my name on the list to be re-elected as Super until at least through 2025, the year we host the MER Convention.

But I have thrown a wrench in the works by accidentally buying a new home, not in the New Jersey Division, not even in the Mid-Eastern Region. I will be a part of the Mid Central Region, Division 9 - Coal Division, once I move into my new home in Beverly, West Virginia.

We were only looking, to plan for 5 or more years out, to see if we liked an area and if we would ever consider moving. We found twice the size house, almost 11 times the land, including a very detached train room of 30 x 120 (some will have to be a garage and shop, even though the house has two 2 car garages). All of this and more for 10% of the taxes.

Sorry everyone, we couldn't pass it up. But, if you are passing near the area, stop to sit on the porch and say hi, or walk to the back of the yard to see my million dollar (didn't

actually pay that much) view at 2085 feet above sea level.

I may or may not have one more "View From The Cab" depending on the rules. So I want to thank All of You for the support you have given me. I have always thought of the NJ Division as the Members Division not my division, and I hope you got that feeling from me.



ERRATA NOTICE

The Builder of the Lipton Tea Building was incorrectly identified in the March Issue. It should have been Bruce Barrett.



Lipton Tea
By Bruce Barrett

Model Contest News

By Jack Menaker, Model Contest Chairman

Contest for March 2021 – Water Feature

“Water, water everywhere and all the boards did shrink!

Water, water everywhere and not a drop to drink!”

WOW!

10 entries, 19 beautiful pictures, 104 well-earned votes = 1 happy winner.

The winning three photographs was entry #1 submitted by our Superintendent, Bill Grosse.

All the scenes offered skilled takes on H₂O related to railroading. All of the pictures prove how talented our members are. This was a very

successful contest. More to come.

So, how to end this crazy year? Hopefully, because of Covid Vaccines, things will be back to normal again in October.

Announcing the next two contests.

The contest for May 2021, will be Freight Yards. From small local yards to large regional yards – show us what you got.

For November 2021, lets try “The Boxcar Challenge” that was originally due for March 2020. This leaves eight (8) months to put together a mini diorama using it as the main element.

The rules are shown below
Size Matters!

If you model O scale, the diorama must be 20” x 12”

If you model HO scale, the diorama must be 10” x 6”

If you model N scale, the diorama must be 5” x 3”

The boxcar must be recognizable!

It can be all beat up but must be identifiable as a former boxcar. You cannot make furniture using the boxcar boards and pieces.

Use your imagination, and good luck!



Entry # 1 - Bill Grosse [3 Pictures]

Crosswicks Creek and Doctors Creek, Yardville, NJ joining together here to flow west into the Delaware River

Model of an actual Location a on 24" X 60" Free-mo Module. All scratch built / hand made scenery except people, boats, and temporary kitbashed bridge girders. Some modelers license taken using multiple simultaneous activities To Increase Interest, and to allow for module transportation.



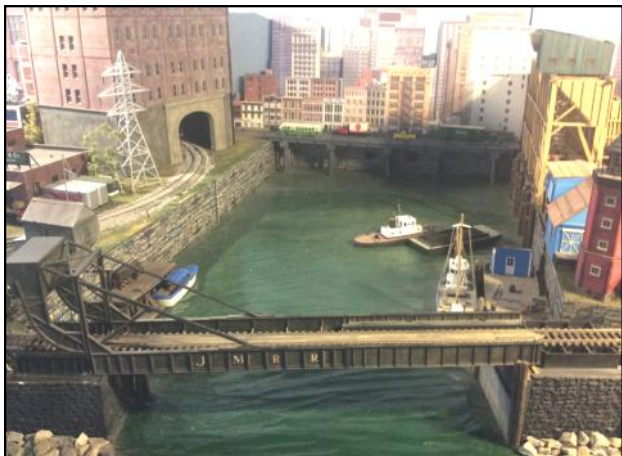
Doctors Creek on the left, Crosswicks Creek on the right. Flowing west, towards the camera. A Sand Hills Industrial Terminal Train is on the bridge.



Looking west over Doctors Creek with the train reflection in the water next to couple comparing fish sizes.



Late day over Crosswicks Creek feeder stream with a camp set up for the night.



Jack Menaker Photo

**Entry # 2 - Jack Menaker [1 Picture]
Frelinghausen Creek In Newark, NJ in the 1950's.
A Freelanced Model**

The diorama includes an operational bridge over the creek, connecting South Newark to North Newark. The scene includes scratch built, kit bashed, and Detailed Kit Models from Sheepscot, DPM, and Others.



Mike Prokop Photo

**Entry # 3 - Mike Prokop [1 Picture]
Reading RR Linden Street Freight Station,
Camden, NJ**

This is a model of an actual location on The Delaware River, built on Free-mo Modules. All scratch built except for rail cars, and highly detailed Tug Kit from Frenchman River Model Works. Float Bridge and Car Float are Kitbashed Walthers Models.



Mike Prokop Photo

**Entry # 4 - Mike Prokop [1 Picture]
Wallington River Bridge, near Kingston, NY,
circa 1950's**

The Bridge is a Model of the Canyon Diablo Bridge in Arizona, built by the Santa Fe. Scratch built using Central Valley Parts and enlarged to Span Wallington Creek.

**Entry # 5 - Mike Prokop [1 Picture]
Geneese River, Upstate, NY, circa 1950's**
A freelanced interpretation of the area modeled includes a Walthers Double Track Bridge and scratch built scenery. The Spud Barge is a Seaport Model Works Kit with added detail parts, figures, and lighting.



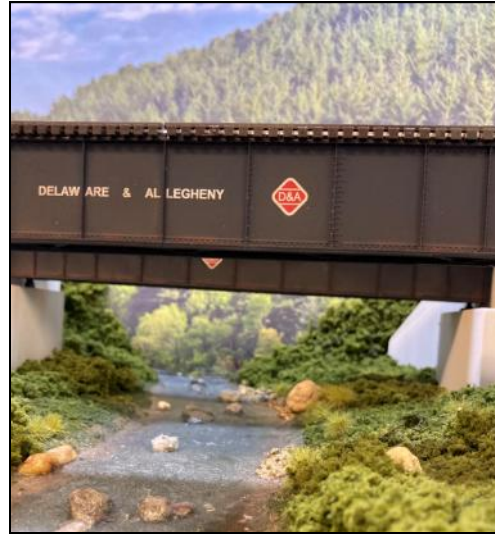
Mike Prokop Photo

Entry # 6 - Joe Zebrowski
[3 Pictures]
Clearfield Creek,
Clearfield, PA

A selectively compressed
version of Clearfield Creek
in Clearfield County, PA.



Looking North toward the
Susquehanna River (it would be
behind the hill to the left). Bridges are
Exact Rail Kits. Abutments and
scenery were scratchbuilt.



Ground level view of Clearfield
Creek, looking North

Joe Zebrowski Photos



Straight down view of bridges, creek
curves to left between hills. Mainline
track at front, Coal Mine lead at rear.

Entry # 7 - Gus Foster [3 Pictures] Frankford Creek, Philadelphia, PA, circa 1956.
Model of prototype scene, using photos from Philadelphia City Records, Google Earth & YouTube



Model of prototype scene. Pennsylvania RR
Bridge Scratchbuilt with Styrene.



Joseph Berliner Co, Bridge built from Central
Valley Plate Girder Bridge Kit with Detail Assoc.,
Chooch, & Evergreen Styrene parts. Buildings
are Kibri, and fence is Walthers.



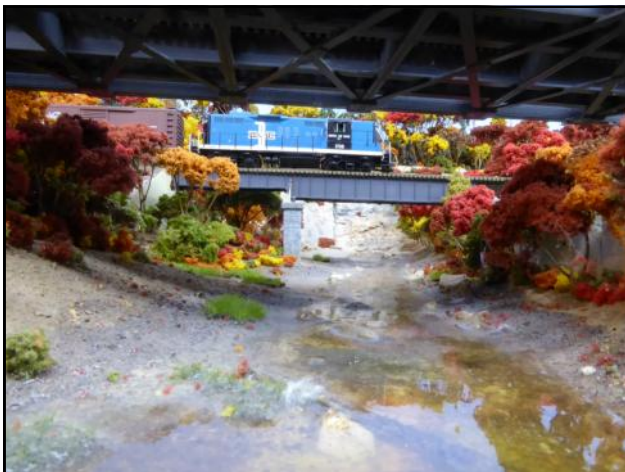
The view under the bridges, Pennsylvania RR
Bridge and the Joseph Berliner Co. Bridge.

Gus Foster Photos

Entry # 8 - Ed Sproles [2 Pictures]
New England & Western Railroad, 1970's
Freelance Scene Representative of New
England, Using Wathers Truss Bridge and Micro
Engineering Deck Girder Bridge, Along With
Combinations of Scenery.



A Fisherman's Eye View #1



A Fisherman's Eye View #2

Ed Sproles iPhotos

Entry # 9 - Bob Duffield [2 Pictures]
Scummy Pond In A Freelanced Pennsylvania RR
Location. Modeled Using Kitbashed Retaining
Wall, Kit Culverts, and Scratch Scenery.



Scummy Pond # 1, showing the Results of storm
drains flowing into a "Pristine" pond.



Scummy Pond # 2 showing some yellowish, pre-
EPA, industrial discharge adding some color to
the pond.

Bob Duffield Photos

Entry # 10 - John Swift [2 Pictures]
Water scenes along the Pennsylvania RR.



Pensy Electrics over the Water



A Tuscan Red GG1 with a Couple of Dare Devils
jumping from the bridge.

John Swift Photos

Clinics for the May Meet

By John V. Gallagher, Director of Clinics

This is our last meet of the Spring. We join our fellow New Jersey members of the NMRA with a two clinic program, virtually. Each division provides a clinic presentation, as we do in joint meets.

The New Jersey Division's clinic will be presented by member **Glyn Thomas, MMR** on the topic "**Modeling the CNJ in the Lehigh Valley,**" describing his home model railroad.

Glyn recently moved back to his home in New Jersey from Philadelphia where he actively participated in the Philadelphia Division. Some may recall he presented this clinic to his former division a few years ago.

Since returning to New Jersey, and with the pandemic, Glynn decided to make significant changes to his CNJ layout with a major expansion to double the layout size.

Glyn attended many of our division meets from Philadelphia and presented clinics in our Works in Progress format meets. He also

excels in photographing models and layout scenes. I invite you to examine the January 2021 photograph in the NMRA Calendar for an example of his modeling as well as photographic skills.

The Garden State Division will provide a clinic by **Tom Wortmann**, on "**Converting Older DC Diesels to DCC**". The purpose of the clinic is to prove that you do not need to shy away from converting older, non DCC-ready locomotives to DCC without driving yourself crazy. With a little patience and some basic tools it can be done. Tom will explain what you are dealing with and how to overcome the issues with older engines so your old favorite from years back will run on your DCC layout. He even shows you how to give that old favorite a voice, by installing a sound decoder and speaker.

A photo of Tom's installation is shown below.



Tom Wortmann Photo

My list of potential clinicians grows thinner with each meet. I seek clinicians for the fall 2021 and spring 2022 meets, some will be presented in the virtual Zoom format as we cannot predict when the pandemic restrictions ease and it is safe for group meetings. Please consider volunteering to present a meet clinic. Contact me and tell me about your ideas. The summer provides a span of several months where you can develop a clinic on modeling, the prototype, or other topics. As always, I am available to assist you so you can present a successful clinic. My contact information is on page 2 of the of *Train Orders*.

A New Clinic Approach:

In addition to the traditional clinics in the NJ Division, we will try out the following:

Name: **Layout Vignettes**

Concept: With the pandemic still underway and with an unsure future for returning to the traditional division meets in the foreseeable future, I am proposing an occasional use of this new kind of presentation program. The details follow:

- Members will be recruited or volunteer to participate,
- A layout vignette means a virtual visit to a modeler's layout for a brief on-screen presentation of a *small* layout scene. That

is the “vignette” part, a brief description. It is not a layout tour.

- A member would select a small scene from the layout, give it proper lighting for photography, and take a number of photos with a digital camera, tablet or cell phone.
- Transfer the digital image files to the computer and save them as individual files.
- Select and organize a series of these photos and copy them into a PowerPoint presentation. I recommend about 5 to 7 photos max.

Make one title slide for the beginning of the presentation.

With the pandemic keeping us apart and layout visits cancelled due to the risks for exposure to the family in member homes, this may provide an alternative to the learning

experiences of in-person layout visits. Here are some ways a presenter may give specific layout features an explanation of: theme, models, scenery and details.

- Give an overall description of the scene such as why it exists, the purpose of its relationship to the railroad, and the how long it took to make it.
- Discuss specific modeling accomplishments and modeling challenges overcome.
- Identify the sources of models: kits, kit bashes, and scratch built construction.
- Lessons learned, and if you built the scene again, what would you do differently.
- Other comments.

Keep it simple. You only have 5 minutes to present your vignette!

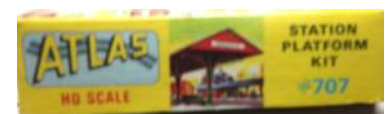
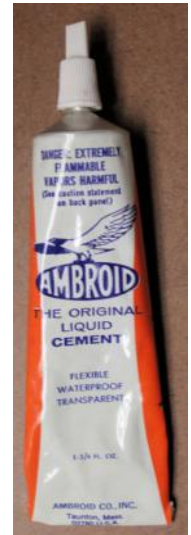
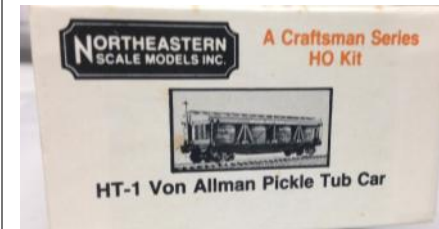


The Station at Mongaup Valley

J. Gallagher Photo

Do You Remember?

Over a period of time here are several items that you may have seen or purchased at a Hobby Shop or NJD Meet.



A FEW HANDY GADGETS

by Mike Prokop

Recently, while troubleshooting where an electrical gap existed between two booster units on my DCC equipped model railroad, a light bulb went off in my head! I grabbed one of these handy gadgets out of my toolbox. Setting it on the track in the area I was unsure which booster was powering that particular section, the LEDs on board lit up. I then powered off one booster at a time until the device went dark, and then I knew which booster controlled that section of track. Admittedly, there are other ways to determine this. However, having a few of

these handy gadgets around can help you not only do this, but many other things in figuring out if there is power to a section of track, or a turnout. It can also help illuminate a dark area in which you are working.

The device is super simple. Really, it's just an LED and resistor combo that you put the leads across the track. If there's power to the track at that point it will light up. With DCC you do not even have to worry about polarity with the LEDs. Due to the nature of the DCC signal on the track, believe me, the LED will light no matter how you hook it up to the track. You can forget about the Cathodes, Anodes, positive and negatives and all that complicated electronic mumbo-jumbo! You do, however, need a resistor on one leg of the LED to limit the current to the device, unless you like to see a quick bright flash of light from the LED and then eternal darkness. That definitely is a cool thing to do but not for this project. But, if you cannot help yourself and must, go ahead and blow up a few LEDs! Yes...it is fun!

The housing for the handy gadget can take many forms. Some shapes and designs can be made as an artistic creation, and some are designed for a specific purpose. Look at the photos to get some ideas. There are too many different versions to cover in this newsletter article (maybe a clinic might help), but I will highlight a few of my favorites.

I find the pocket handy gadget design especially useful. You can carry it with you and determine track power anywhere and anytime. No more grabbing that engine with your hand and shoving it back and forth on the track to see if it will run. Reach for the pocket gadget instead to see if track power is present. It is especially useful around turnouts where power may be lost at the closure rails, which is a typical failure mode on commercially made switches. You will notice the pickup points on the pocket handy gadget are at the end of two tabs. This helps



getting into the tight spaces around the various areas of the turnout. Another of my favorites, other than the most used standard three-legged box type, is my flashlight version. Use enough LED strip light leftovers on the side of the box so that when you place it on the track, it lights up a dark area very brightly on your layout as you re-rail a car or fix some broke stuff there.

As you can see from the photos, all my “handy gadgets” are made from scraps and cutoffs of leftover styrene. The electrical pickups can be formed using copper foil tape, phosphor bronze wire or PC board materials. Many types of LED can be used,

(except the ones you made into one-time flash bulbs,) like traditional 3mm or 5mm, and LED strip ones. I generally use a 1k ohm resistor on one of the LED legs to control the current and extend the life of the LED beyond a micro-second!



Mike Prokop Photos

By the way, there is one of these commercially available as a kit if you don't want to make one from scratch. Go to <http://www.modelrailroadcontrolsystems.com/dcc-flag-man-track-power-tester>. It looks like 4 units cost about \$15. Keep in mind you still have to assemble them. But I say get out your scrap box of stuff and be creative. Save big bucks and construct some of your own design. It's not hard. You will feel really good about making it yourself and discovering how “handy” these “gadgets” can be!



75th Anniversary Gondola

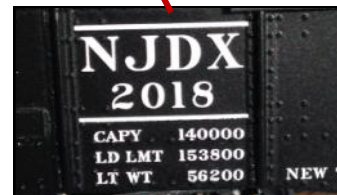
A review of the cars. They are \$35 each, or a set of two for \$65. Car numbers are 1968 and 2018, which was the year that the New Jersey Division was founded and the year we celebrated our 50th anniversary. The model is from Tangent Models and is a superb model of a 52'6" Riveted Drop End Gondola with 70 ton trucks. The placement of the brake wheel on the side is an identifying feature of a drop end Gondola.

They're ready to run and come with Kadee couplers.

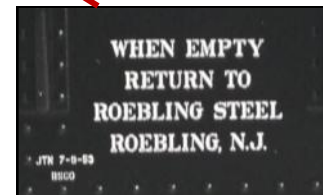
We acquired equal amounts of the two car numbers. Cash or check will consummate the deal and you'll be hauling stuff around your layout in no time!

These are excellent looking and beautifully running cars, but, a car not decorated for a prototypical railroad, they do have the look of a gondola that you might see in any train consist from the 1930's to the 1980's.

To order by mail see the Order Sheet on page 14. USPS Priority Mail postage is: \$9 for one car and \$10.75 for two cars.



The Reporting Marks “NJDX” for this car Identify the owner as the New Jersey Division and the “X” designates a Private or Non-railroad owner.



This Stencil indicates the Gondola is in Assigned Service to Roebling Steel. It must be returned to Roebling after its load has been delivered.

Petition for Nomination as a Director of the New Jersey Division For the term September 2021 through September 2023

Candidate's Name (Print legibly): _____

Candidate's NMRA member number: _____ Expiration Date: _____

Petitioners' Signatures _____ NMRA member number: _____ Expiration Date: _____

1. _____
2. _____
3. _____
4. _____
5. _____

As a candidate for the position of Director of the New Jersey Division, NMRA I hereby certify that I am a member in good standing of the New Jersey Division, NMRA and that to the best of my knowledge, all signers of this petition are members in good standing of the New Jersey Division, NMRA.

Candidate's Signature _____ Date _____

----- Cut along this line -----

The New Jersey Division, Mid-Eastern Region, National Model Railroad Association, will be holding an election of Directors for the term September 2021 through September 2023. All regular and associate NMRA members living within the boundaries of the New Jersey Division are eligible to be candidates for the annual election.

In order to have your name appear on the ballot, as specified in the bylaws of the NJ Division, you must submit a signed petition indicating your desire to be a candidate and have it signed by 5 other regular or associate NMRA members who also reside within the boundaries of the NJ Division. Their NMRA membership numbers and expiration dates must be included. **Note:** Rail Pass members are **not eligible** to be a candidate, nor to be a signer of this petition.

When complete, mail your petition to the Asst. Chairman of the Nominating Committee:

Mr. Bill Howard
Attn: NJ Division Election Committee
7 Hamid Ct.
Hamilton, NJ 08619

All petitions must be received by August 1, 2021 in order to be included on the ballot. All petitions will be verified by the Nominating Committee.

This is the official petition form. If you are reading this online, please print this page and fill out the form. If you are reading this in hardcopy, simply copy and complete this page or use this original. When completed, please mail it to the address shown.

Along with your nominating petition, please include a photo and a short letter of introduction to let the members know why you should be elected to the Board of Directors. This information will be sent with the ballot for members to use when considering for whom to cast their votes.

In accordance with the By-Laws of the New Jersey Division, MER-NMRA. Ballots will be mailed with the September Train Orders hardcopy edition by August 30, and ballots must be received by September 13, 2021. Electronic ballots will be used by the NJ Div. Board of Directors for everyone with a valid email address on file. Results will be announced during the NJ Division meet on September 18, 2021. Any further questions can be directed to the Chairman of the Nominating Committee, Bill Grosse at 609-532-3431 or email - njdiv.super@gmail.com



ACHIEVEMENT PROGRAM GOLDEN SPIKE AWARD APPLICATION FORM

PLEASE COMPLETE THIS APPLICATION FORM AND SEND TO YOUR REGIONAL OR DIVISIONAL AP CHAIR

Member's Name _____ NMRA#: _____ EXP: _____

Address: _____ City: _____

State/Prov: _____ Country: _____ Postal Code: _____

Date Submitted: _____ Region: _____

The Golden Spike Award will be awarded to any NMRA member who has completed the Qualifications Checklist, obtained the necessary signatures and who does not hold MMR status. It will be administered by the regional and divisional AP Chairs. AP regulations and definitions apply for scratchbuilding and superdetailing. To qualify for the award the member must complete the following checklist, obtain the signature of the divisional AP Chair or another NMRA member designated by the divisional Chair. The divisional Chair will submit the signed form to the regional AP Chair who will issue the Golden Spike Award certificate.

QUALIFICATIONS CHECKLIST:

1. Rolling Stock (Motive Power & Cars):

Display six units of rolling stock either scratchbuilt, craftsman kits or super-detailed commercial kits.

2. Model Railroad Setting (Structures & Scenery)

- Construct a minimum of eight square feet of layout including scenery.
 Construct five structures either scratchbuilt, craftsman kits or superdetailed commercial kits. If a module has less than five structures, additional structures separate from the scene may be presented.

3. Engineering (Civil & Electrical)

- Three types of trackage required (e.g. turnout, crossing, crossover, etc.). All must be properly ballasted and installed on proper roadbed. Commercial trackage may be used.
 All installed trackage must be properly wired so that two trains can be operated simultaneously (e.g. double track main, single track main with sidings, and block or command control).
 Provide one additional electrical feature such as power operated turnouts, signaling, turnout indication, lighted buildings, etc.

Witness: _____ Name: _____ NMRA #: _____

Regional AP Chair: _____ Region: _____

New Jersey Division 50th Anniversary Gondola

**Tangent Scale Models Bethlehem
Riveted Drop-End Gondola in HO Scale
The cars are In Stock and Ready to Run
They have been produced with two numbers
to Commemorate our 50th anniversary
1968 & 2018**

**The car body is black with white lettering
and data conforming to the 1950s
The cost is \$35.00 for one car or
a set of both numbers for \$65.00
A check made payable to the NJ Division
must be included with your order**

Name_____

Address_____

City, State and Zip code_____

Telephone_____Email_____

See Tangent website for more info support@tangentscalemodels.com

Return this form to N.J. Division NMRA, PO Box 276, Crosswicks, NJ 08515-0276