

Train Orders

Official Newsletter of the New Jersey Division,
Mid-Eastern Region, National Model Railroad Association



May 2023

Volume 34 Number 3

The May Joint Meet Will Be In Hillsborough, NJ

John V. Gallagher, Superintendent

Our joint meets with bordering NMRA divisions benefit the members of both divisions. We gain by the new friendships with fellow modelers we normally don't meet to share our hobby. It extends the pool of clinic presenters beyond our talented membership, further diversifying our knowledge base and skills. Traveling into new territories opens possibilities to visit new layouts open for those meets. When we host a joint meet, we get to show our layout accomplishments and modeling skills. Yes, attending a joint meet when they host means driving a longer distance. I find the benefits justify the mileage and time.

On May 13th, our northern New Jersey neighbors in the Garden State Division [GSD], Northeast Region of the NMRA host our joint meet .

Arrive early to sign in and get situated for the meet program. The events of a Garden State Division meet include initial welcoming and business activities, two clinics, a "Bring and Brag" event, white elephant sales, and other activities. After a lunch break, layouts will be open for the afternoon.

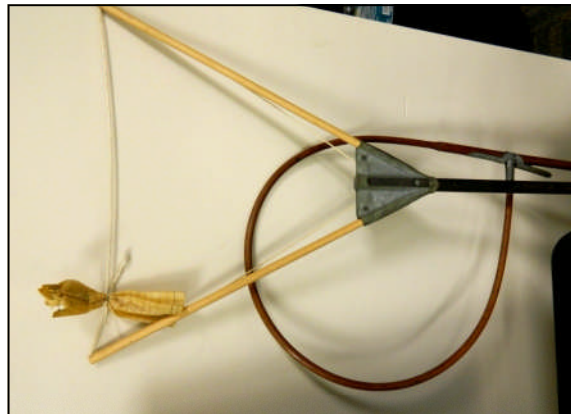
The clinics for the program include: Joe Valentine of the GSD titled **Where Am I? A Sign of the Times** and Ralph Deblasi of the NJD titled , **How to Build a Fine Scale Miniatures Kit – Without the Kit, Part 1**. See page 5 for descriptions.

NJD members can participate in the "Bring and Brag" activity of the GSD meet. Bring a model or item related to model railroading to show and tell about the model. The description should be short and informative. Meet attendees may ask questions or comment about your item.

I look forward to joining you at this meet. Bring a mask in case a layout owner requests masking due to residents who are vulnerable to health problems. Thanks!



Model Display
The Best In Show was Bill Myers with the Train Order Fork & Loop.



Next Division Meet

Saturday May 13, 2023
9 a.m. to 12:00 noon
Hillsborough Township
Municipal Building
379 South Branch Road
Hillsborough , NJ 08844

Clinics:

Joe Valentine

Where Am I? A Sign of the Times

Ralph Deblasi of the

**How to Build a Fine Scale
Miniatures Kit**

For Table Reservations contact
John Gallagher at 856 228-2239
njdiv.super@gmail.com

In This Issue

May Joint Meet	1
NJD Information Page	2
View From The Cab	3
Model Display News	4
March Clinics	5
Special NJD Meet	5
Hill Valley RR Update	6
50th Anniversary Gondola	7
Railroad Crossword	8
Celebration	9
RR Crossword Answers	9
Ballot Petition For BOD	10
Golden Spike Appl. Form	11

Train Orders

Official Newsletter of the New Jersey Division. NMRA
P.O. Box 276

Crosswicks, NJ 08515-0276

<https://njdivnmra.org>

Train Orders is published 5 times per year for the NMRA members and friends of the New Jersey Division. Online newsletter is always available at NJ Division website. Mailed hardcopy newsletter is \$15.00 per year. The opinions expressed do not necessarily reflect those of the Division. Products and publications mentioned in Train Orders in no way constitute an endorsement by the Division.

Contributing to Train Orders

Train Orders welcomes contributions from the New Jersey Division membership. Letters, articles, photos and other items may be submitted to the editor, Fritz Plenefisch, at fplen3@verizon.net or to 327 Sharps Lane, Hamilton, NJ 08610-1334. Please include return postage if you would like materials returned.

Deadline for material for the September Train Orders is August TBD, 2023

Superintendent and Director of Clinics
John Gallagher
njdiv.super@gmail.com
856 228-2239

Clerk/Secretary
Joe Zebrowski
609 268-9451
trackjack@comcast.net

Director- Membership
Geert Marien
732 757-1061
geert@mindspring.com

Director-Editor
Fritz Plenefisch
609 585-7660
fplen3@verizon.net

Paymaster/Treasurer
Tom Neukirchen
609 584-5184

Assistant Superintendent, Bookstore and Door Prizes
Mike Prokop
njwrr@aol.com
609 610-2687

Director-Contest Chair
Jack Menaker
732 908-6571
jackmenaker@yahoo.com

Director
Thom Radice
732-713-5649
thomradice@gmail.com

Division AP Chair
PJ Mattson, MMR
856 467-0421
pjmattson129@gmail.com

Visit us at <https://njdivnmra.org> and join us on Groups at <https://groups.io/g/NJDivNMRA>

NJD Information Page

May Division Meet

Saturday, May 13, 2023

379 South Branch Road

Hillsborough Municipal Building

Hillsborough, NJ 08844

Next Board Meeting

September TBD, 2023

Host – John Gallagher

Please let us know if you plan to attend
njdiv.super@gmail.com

September Division Meet

Saturday, September 16, 2023

Location TBD

NJ Division Sponsored 2025 Mid-Eastern Region Convention

HELP WANTED!

Committee Chairpersons; Workers.

Contact John Gallagher
at 856 228-2239 or
njdiv.super@gmail.com

Two hotels have been contacted so far, both appear to meet or exceed MER requirements. A request for proposal (RFP) is being prepared for MER approval prior to presenting to the prospective hotels. The board members need to think about a theme and purpose for the convention, and objectives to entice MER members to attend. The specific dates will be the second or third week in October, 2025 for a Thursday thru Sunday convention. Joe Zebrowski, Thom Radice and Mike Prokop will be checking out additional possible hotels which would be able to meet the MER's various criteria.

NJ Division Area Hobby Shops

* **AAA Hobbies & Crafts**
706 N. Whitehorse Pike,
Magnolia, NJ 08049
(856) 435-7645
www.AAAHobbiesandCrafts.com

* **Sattler's Hobby Shop**
14 Haddon Ave.
Westmont, NJ 08108
(856) 854-7136

* **The Train Room Online Store**
www.thetrainroomNJ.com
e-mail thetrainroomnj@msn.com

* **Yankee Dabbler - Track 33**
101 W. Kings Hwy, Bellmawr, NJ
08031

* Offers discount to NMRA members.
Must show Current Membership Card

Membership Information

Any person who is a member of the NMRA and lives within the boundaries of the NJ Division as defined by the NMRA is also a member of the division. Non member guests are welcome to attend three of our meets, after which they will be asked to join the NMRA.

NJ Division Annual Activity Fee:
\$10.00 (optional and includes 5 meets) or individual meets \$5 at the door.

First time guests, no charge!

**National Model Railroad Association P.O. Box 1328
Soddy Daisy TN 37384-1328**

View From The Cab

John V. Gallagher, Superintendent

It's Personal, We are the National Model Railroad Association. Really? Is our organization an association of model railroads? I don't think so. Perhaps, our name should be the National Model Railroaders Association. We are an educational organization, dedicated to the growth and development of model railroaders. The growth and development focus on the knowledge's, attitudes and values, and skills of people, specifically model railroaders. The NMRA does meet educational purposes through the achievement program, standards, and the many ways it offers information through meets, conventions, the web site, the *NMRA Magazine* and other outlets.

What about the "people" aspect, how do we address that? If you read Gordy's article in the May issue of the *NMRA Magazine*, you will learn a lot about people in our association. Who is Gordy? If you don't know, then that is an issue with people.

I hope I haven't lost you. Do we know each other? How many NJ Division members can you name? I'm the superintendent and I can't name all of you [about 200]. I also have a challenge of remembering names. Duh! Name tags help.

Since COVID, our in person meet attendance averages 35 – 40, well down from the pre-pandemic 75 – 100. Are we losing touch with each other? I worry that members may lose interest in maintaining

membership. Gordy says we lost over 1000 members last year. The Works in Progress format meet in March was quite successful and members stated that. How many meets have you personally attended since May, 2022? Why or why not? Please give me some feedback at njdiv.super@gmail.com.

Finally, you all received the notice on Mail Chimp about Pete Mosiondz, Jr. passing. Since I assumed superintendent, least four members passed. Please let me or members of the board know about members who are ill or have passed. Communicate. We want to reach out to ill members with a get-well card, phone call, or even a visit to show we care. Notice of a member passing gives us an opportunity for a card of condolence or possibly a visit at the viewing. Keep us informed so we can keep it personal. Thanks.

The 2025 MER Convention A small committee of board members took the initiative to begin the tasks necessary for the planning, organizing, directing and controlling the operation of the 2025 Mid-Eastern Region's [MER] convention. The New Jersey Division is the host. Assistant Superintendent Mike Prokop, Secretary Joe Zebrowski and Director Thom Radice studied the MER Convention handbook, searched for hotels located within the NJD counties and selected two hotels that meet the MER specifications. They made initial visits with hotel personnel as a reconnaissance to get

initial impressions for recommending one to the MER. They are now finalizing an RFP [Request for Proposal] to submit to the hotels for a written proposal. We will keep you informed as the process moves forward. We need a number of volunteers to assume responsibility for various jobs on the convention committee. What can you do? What would you prefer doing to support the convention. Participation on the convention committee will earn participating members valuable points in the Volunteer AP program. Thanks.

Election As announced in the last issue of **Train Orders**, there is an election this summer for four directors to the New Jersey Division Board. Specifications can be found in the By-Laws of the New Jersey Division, found on our website. You can get nomination forms from me. Request them at my superintendent's Gmail address, above. You can get signatures from NJD members at the May meet. (*See Page 10 for Petition Form*)

Special NJD Meet Mark your calendar for August 5, 2023. We are planning an all day special division meet at Switlik Park, Yardville. We will announce specifics soon so you can register for the meet.

No one can do everything
 but everyone
 can do something.
Volunteer



Model Display News

By Jack Menaker, Model Display Chairman

As described, Railroadiana is any piece of equipment, signage, advertising, paperwork or memorabilia that came from a railroad.

We had some very interesting items ranging from fabric headrests to trolley/train throttles to a strap from a NY Transit subway car to an antique Train Order Fork & Loop, from spikes to a railroad route map.

The Best In Show, as voted by the members, was Bill Myers with the antique Train Order Fork & Loop. He will receive a certificate and a voucher to cover the yearly Coffee Fee.

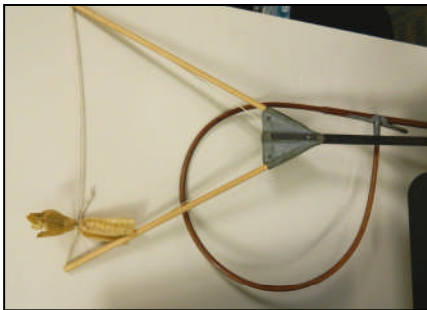
The second Best was the NYC Transit train controller, and the third Best was the NYC Transit strap handle.

Division in May, we will not have a Show Table. AP Awards and Golden Spike Awards

It has been quiet in the judging arena recently, but I have heard from three members of the NJ Division that they would like their layouts judged for a Golden Spike Award. Any member interested, please let me know you would like to be evaluated for an award



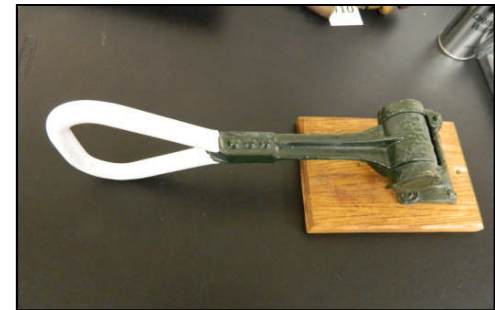
The Best In Show, was Bill Myers with the antique Train Order Fork & Loop.



The second Best in Show was Mike Prokop's NYC Transit train controller.



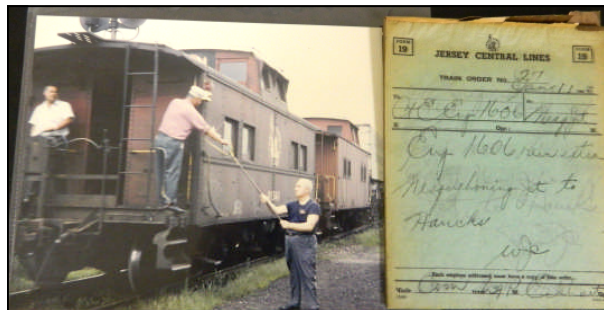
the third Best in Show was Jack Menaker's NYC Transit strap handle.



Mark Rossted
California and Denver Zephyr items.



Bill Myers
Handing up Orders



Bill Howard
PENN CENTRAL SYSTEM MAP



Clinics for May

John V. Gallagher, Director of Clinics

Where Am I? A Sign of the Times

By Joe Valentine,
Garden State Division

Joe noticed that on some model railroads the locations may be identified by small signs on the model buildings or labeled on the fascia. On his layout, Joe wanted his signs to be more visible and he achieved that in a big way. In this clinic Joe will explain how he created the signs that he uses to identify locations on his layout. The step-by-step creation of the layout signs at least how he did it with a little help from his friends.



How to Build a Fine Scale Miniatures Kit – Without the Kit, Part 1

By Ralph Deblasi,
New Jersey Division

Ralph will demonstrate his techniques using a line of products from railroad kits to do just that. In support, he will bring some structure kits for members to examine how he accomplished his goals. With the price of some kits on the market, members should find his techniques valuable in accomplishing their modeling goals with an economic benefit.



Special N J Division Meet August 5th, 2023 by Mike Prokop

This is a reminder about our Division's special meet this coming summer on August 5th at the Switlik Park facility. An email communication will remind everyone about the event over the summer so keep an eye out for it a few weeks before. We have the Switlik facility for the entire day so our program will vary somewhat from the usual format. We are planning to have multiple clinics, a popular vote modeling contest and AP judging of models. In addition we'll host a model showcase for you to show off and briefly tell us about your project. We're still putting together the program and will consider ideas and suggestions to add to the festivities. The tentative scheduling is having the meet formally begin at 10am, break for lunch around noon, and then continue into the afternoon. Some local layouts may be open for few hours in the afternoon but the meeting at Switlik should conclude between three and four PM. You can forward any questions to Mike Prokop's email at njwrr@aol.com. Thanks and we look forward to seeing everyone in August.



Hill Valley Railroad Update-Part 3

by Mike Prokop

Much progress has been made transforming my HO railroad, the New Jersey & Western, into my new railroad, the Hill Valley. The HVRR is a model railroad built in On30 which depicts a northeastern narrow gauge railway pre World War Two. It's a free-lanced pike which gives me many freedoms and latitude in design, construction, and operations.

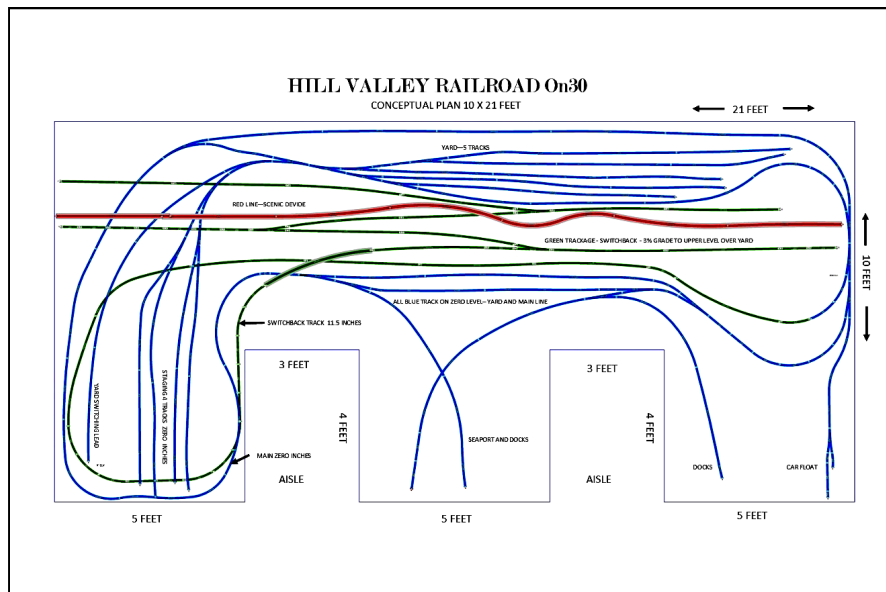
But first, an update on the real work being done. Removing the old layout from around and off the walls resulted in much repair and painting of the drywall. Unfortunately, resulting in lots of non-model railroad activity. This is necessary work though to have a nice clean finished train room that's comfortable to work in with the new build, and great for

having operations and hosting visitors. Only a small part of the old layout still stands, the major passenger station Wallington. This area is still under DCC control and can run some short shuttle trains, mostly for the entertainment and enjoyment of my grandson. This section will be removed after I can get some track installed and powered up on the HV. This time is getting very close and I'll report on it in my next update.

In the mean time, lots of On30 motive power and rolling stock is being lettered and decaled for the Hill Valley and test run. Keep in mind that On30 operates on HO scale track, so fun running trains on this old section is still available, but of course limited. Here is a photo

of some HV equipment just patiently waiting to begin operations on the new layout. Also, included is a preliminary track plan for the HVRR which is mostly conceptual and will definitely change as work progresses.

If you have any questions or would like to discuss my new model railroad, see me at the May division meet. I'll also have lots of worthwhile stuff from the old layout for sale at the meet sporting great prices.



New Jersey Division 50th Anniversary Gondola

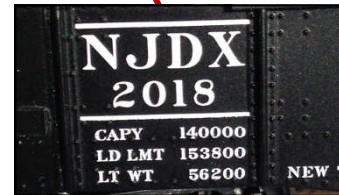
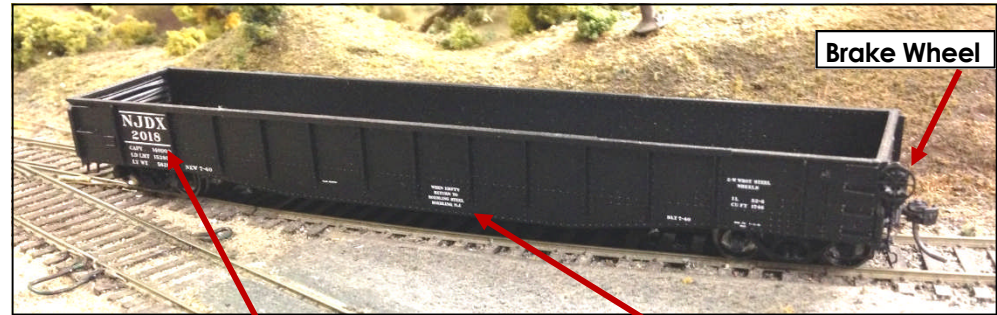
50th Anniversary Gondola

A review of the cars. They are \$35 each, or a set of two for \$65. Car numbers are 1968 and 2018, which was the year that the New Jersey Division was founded and the year we celebrated our 50th anniversary. The model is from Tangent Models and is a superb model of a 52'6" Riveted Drop End Gondola with 70 ton trucks. The placement of the brake wheel on the side is an identifying feature of a drop end Gondola. They're ready to run and come with Kadee couplers.

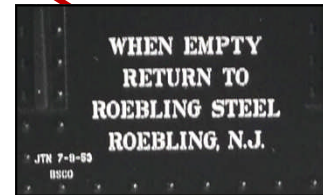
We acquired equal amounts of the two car numbers. Cash or check will consummate the deal and you'll be hauling stuff around your layout in no time!

These are excellent looking and beautifully running cars, but, a car not decorated for a prototypical railroad, they do have the look of a gondola that you might see in any train consist from the 1930's to the 1980's.

To order cars Contact Mike Prokop at njwrr@aol.com or by mail use the Order Sheet. USPS Priority Mail postage is: \$9 for one car and \$10.75 for two cars.



The Reporting Marks "NJD X" for this car Identify the owner as the New Jersey Division and the "X" designates a Private or Non-railroad owner.



This Stencil indicates the Gondola is in Assigned Service to Roebling Steel. It must be returned to Roebling after its load has been delivered.



The car body is black with white lettering and data conforming to the 1950s

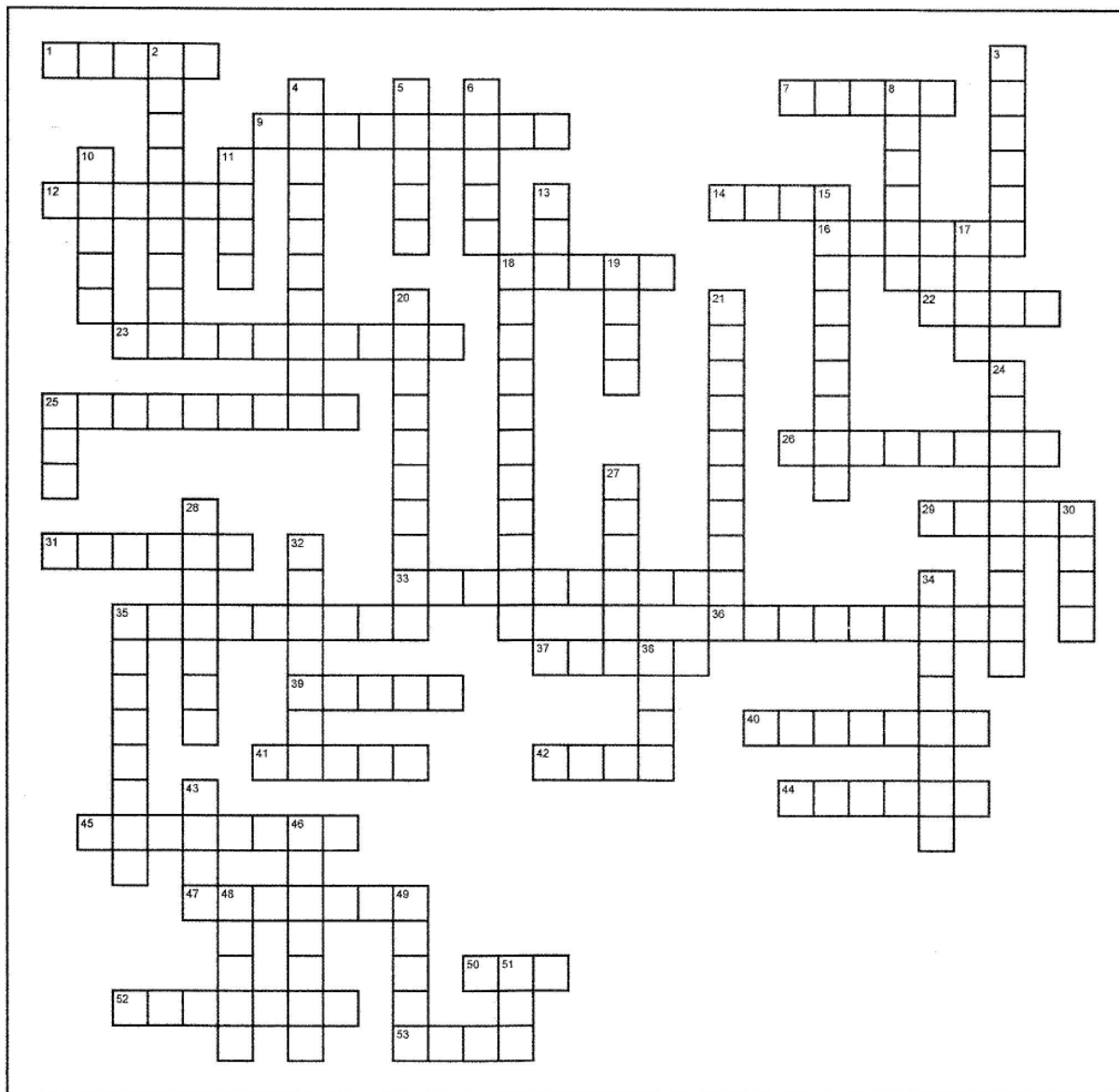
The cost is \$35.00 for one car or a set of both numbers for \$65.00

A check made payable to the NJ Division must be included with your order.

Name _____
 Address _____
 City _____ State _____ Zip Code _____
 Telephone _____

See Tangent website for more information
 support @tangentscalemodels.com
 Return this form to NJ Division NMRA;
 PO Box 276, Crosswicks, NJ 08515-0276

Railroad Crossword



Across

- 1. ___ Code
- 7. Phila Transit
- 9. Armed Signal
- 12. Coal Carrier
- 14. Gold Spike Locale
- 16. Words on an Arrow
- 18. High ___
- 22. NY-AC Train
- 23. DL&W Name
- 25. ___ Limited
- 26. C&A Loco
- 29. J.G. ___
- 31. Crossing Signal
- 33. Famous Engineer
- 35. Action Road
- 36. PATCO Power
- 37. GCT Meeting Spot
- 39. British Truck
- 40. Coupler
- 41. Packing Box
- 42. Big G Mascot
- 44. Bag Helper
- 45. RR Overhead
- 47. K4
- 50. Welded Rail
- 52. Sleeper
- 53. Wide Load Road

Down

- 2. B&O Tunnel
- 3. U.P. Steamer
- 4. Train Mishap
- 5. Rail Nail
- 6. GG1
- 8. Needed to Ride
- 10. President's Train ID
- 11. NJ's ___ War
- 13. Train Unit
- 15. Altoona Attraction
- 17. American Locomotive Co.
- 18. Track Worker
- 19. Door Sign
- 20. Grand Central Station
- 21. Train Stopper
- 24. 80 Days Heroine
- 25. Cape ___
- 27. Lackawanna 4-8-4
- 28. PRR Cabin
- 30. River ___
- 32. FEC Backer
- 34. Pigeon Pt. Vessel
- 35. Word on an X
- 38. Chessie
- 43. GP7
- 46. Train Enthusiast
- 48. Fast Train
- 49. Big Hook
- 51. Engine Turner

Celebration


John V. Gallagher, Superintendent

At the March meet that featured the Works in Progress format, seven members presented their clinics four times. It was a busy meet with close time scheduling, and all went well except the recognition of the clinicians. We were in such a rush to load up our stuff and return the facility to its ready for use status that I forgot to celebrate and recognize the clinicians! I will do that during the following meets when the clinicians are present. For now, my thank you goes to:

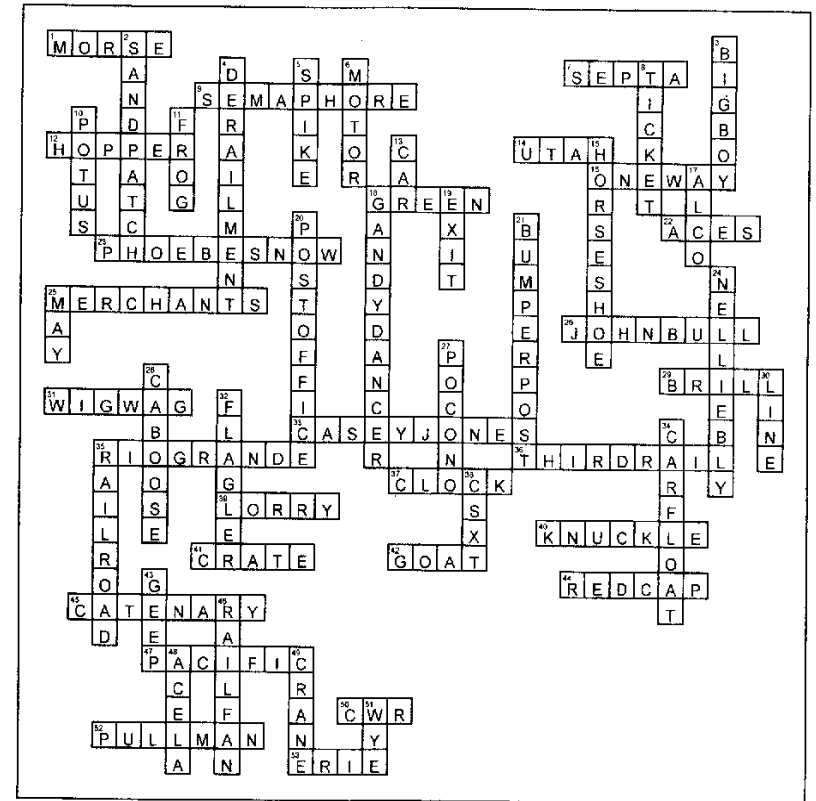
Presenter	Topic
Mike Prokop	Improving Atlas Turnouts – Part Two
Barry Rosier	Cardstock Modeling Detail Tricks
Gerry Michael	How to Design Octagonal Roofs
Glyn Thomas, MMR	Airbrushing
Rick Spano	Unusual Tools for Modeling
Jim Shepard	Vignettes and Trees [Garden RR's]
John Gallagher	Bits 'n Pieces – hands on

Future Clinics

I will pass around the Clinics Volunteer Clipboard at the May meet. Now is the time to think about a clinic **you** can present. You must have some techniques or experiences in modeling or operations or the prototype, or... that you can put together for a clinic. You don't have to describe how you scratch built an award-winning model of the Big Boy! To derive a topic from your experiences, answer the question: What do you do **well**? Tell us what you learned in your modeling journey to develop your knowledge and skills in what you do well. How can we learn from your story? As always, I can assist you in planning, organizing, and developing your clinic so don't hesitate to ask.

We need clinicians for fall meets and winter/spring 2024. Let's plan ahead. Please. 

Railroad Crossword Answers



**PETITION IN SUPPORT OF _____
[Print]
TO BE PLACED ON THE BALLOT FOR THE BOARD OF DIRECTORS
NEW JERSEY DIVISION OF THE NMRA, INC.**

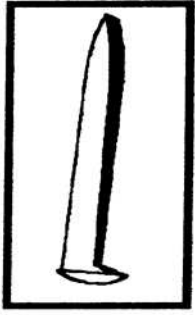
We active members of the New Jersey Division of the NMRA, Inc. support placing
[Please print] _____
NMRA # _____ Date of Membership Expiration _____

on the ballot for election to the New Jersey Division’s Board of Directors for the election scheduled to take place during 2023. We are **residents** in the counties of the New Jersey Division that include Atlantic, Burlington, Camden, Cape May, Cumberland, Gloucester, Mercer, Monmouth, Ocean or Salem.

	PRINTED NAME	SIGNATURE	TODAY’S DATE	NMRA #	MEMBER EXPIRATION DATE
1					
2					
3					
4					
5					
6					
7					

As a candidate for the position of Director of the New Jersey Division, NMRA, Inc., I hereby certify that I am a member in good standing of the New Jersey Division, NMRA, Inc. and that to the best of my knowledge, all signers of this petition are members in good standing of the New Jersey Division, NMRA, Inc.

Candidate’s Signature: _____ Date: _____



ACHIEVEMENT PROGRAM GOLDEN SPIKE AWARD APPLICATION FORM

PLEASE COMPLETE THIS APPLICATION FORM AND SEND TO YOUR REGIONAL OR DIVISIONAL AP CHAIR

Member's Name _____ NMRA#: _____ EXP: _____

Address: _____ City: _____

State/Prov: _____ Country: _____ Postal Code: _____

Date Submitted: _____ Region: _____

The Golden Spike Award will be awarded to any NMRA member who has completed the Qualifications Checklist, obtained the necessary signatures and who does not hold MMR status. It will be administered by the regional and divisional AP Chairs. AP regulations and definitions apply for scratchbuilding and superdetailing. To qualify for the award the member must complete the following checklist, obtain the signature of the divisional AP Chair or another NMRA member designated by the divisional Chair. The divisional Chair will submit the signed form to the regional AP Chair who will issue the Golden Spike Award certificate.

QUALIFICATIONS CHECKLIST:

1. Rolling Stock (Motive Power & Cars):

Display six units of rolling stock either scratchbuilt, craftsman kits or super-detailed commercial kits.

2. Model Railroad Setting (Structures & Scenery)

Construct a minimum of eight square feet of layout including scenery.

Construct five structures either scratchbuilt, craftsman kits or superdetailed commercial kits. If a module has less than five structures, additional structures separate from the scene may be presented.

3. Engineering (Civil & Electrical)

Three types of trackage required (e.g. turnout, crossing, crossover, etc.). All must be properly ballasted and installed on proper roadbed. Commercial trackage may be used.

All installed trackage must be properly wired so that two trains can be operated simultaneously (e.g. double track main, single track main with sidings, and block or command control).

Provide one additional electrical feature such as power operated turnouts, signaling, turnout indication, lighted buildings, etc.

Witness: _____ Name: _____ NMRA #: _____

Regional AP Chair: _____ Region: _____

THE



END