

CLINKERS

OFFICIAL NEWSLETTER OF THE NEW JERSEY DIVISION,
MID-EASTERN REGION, NATIONAL MODEL RAILROAD ASSOCIATION

SEPTEMBER 20, 2014

VOLUME 25 NUMBER 4

Extra 920 South

Our September meet will take us back to the southern part of the division on **September 20**. Note that this is a change in date.

You may remember the church hall that we used back in November 2011. Access from any part of the state is easy as it's right off NJ 55 in Millville. See the directions and map on pages 7 and 8.

Two clinics are on tap:

Bob Hubbard will discuss and display his models of oversized loads carried by railroads where normal clearances and/or weight limits are exceeded. He will describe how he modeled examples of these loads. Such loads usually require special movements along routes where minimum obstacles exist to the movement. Frequently in such moves, railroads require speed limits and special crews to temporarily remove obstacles such as overhead wires, signs, railroad crossing protection, and other limitations and then return them after passage. The composition of the consist may include flat cars for loads that extend beyond the main load carrying car(s) and idler cars between heavy locomotives and the heavy/outsized load to reduce weight loads on bridges and other track carrying structures. It will be an interesting presentation by a superior and creative modeler.

See **Meet** on page 4

Vote!

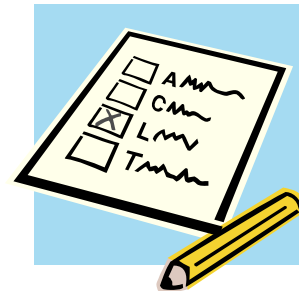
It's time to elect three members to the Board of Directors of your New Jersey Division for the 2014-2015 year. If you are a true New Jersey Division member, that is, you live within the division as described by the MER, and your NMRA dues are current, you will receive a ballot. If you receive this newsletter in hardcopy a ballot is included. If you receive your newsletter online or via email, a ballot has been mailed to you separately along with your annual NJ Division Information Sheet.

If you have not received your ballot by August 11, contact John Gallagher, Election Committee Chairman and he will get one out to you right away.

Note that the order of the candidates' names is alphabetical and does not indicate any preference in choosing among them.

Please make your choices and return the ballot. It already has a stamp and the return address on it so mark it, tape it, and drop it in the mail. Ballots must reach us no later than September 6.

Election results will be certified and announced at the meet in Millville on September 20.



NEXT DIVISION MEET

Saturday, **September 20**, 2014

9:00 AM to 12:00

Millville Community Church
1800 E Broad St.
Millville, NJ 08332

Clinics:

Bob Hubbard
Oversized Loads
Dick Perry
Electronics in Model Railroading

Contest:

Detailed Steam Locomotives

Layout Tour:

1:00 pm to 5:00 pm

Swap tables:

Contact Bob Clegg
856 696 0463
BobcatCS@Comcast.net

IN THIS ISSUE

Schedules	2
View From the Cab	3
Achievement Program News	3
Model Contest	4
NJ Division Director	
Candidate Statements	5&6
Directions & Maps to the Meet	7
Online Color Extras	9



CLINKERS

Official Newsletter of the New Jersey Division
Mid-Eastern Region, NMRA
P.O. Box 8694
Trenton, NJ 08650
www.NJDivNMRA.org

Clinkers is published 5 times per year for the NMRA members and friends of the New Jersey Division. Online newsletter always available at NJ Division website. Mailed hardcopy newsletter is \$7.00 per year. The opinions expressed do not necessarily reflect those of the Division. Products and publications mentioned in Clinkers in no way constitute an endorsement by the Division.

Contributing to Clinkers

Clinkers welcomes contributions from the New Jersey Division membership. Letters, articles, photos and other items may be mailed or emailed to the editor at the above address. Please include return postage if you would like materials returned.

Deadline for next issue: October 10, 2014

Board of Directors 2013 - 2014

Superintendent

Bob Clegg
856 696 0463

BobcatCS@comcast.net

Asst. Superintendent

Chris Widmaier
609 510 2701

Treasurer

Bob Liberman
609 298 7337

Secretary

Tom Lavin
856 824 1405

Director, Clinics

John Gallagher
856 228 2239

Director, Librarian

Bill Howard
609 584 1818

Director, Layouts

Michael Mosher
856 293 9874

Division AP Chair

PJ Mattson, MMR
856 467 0421

Membership Information

Any person who is a member of the NMRA and lives within the boundaries of the NJ Division as defined by the NMRA is also a member of the division. Non member guests are welcome to attend two of our meets, after which they will be asked to join the NMRA.

NJ Division annual activity fee: \$10.00 (includes 5 meets) or individual meets \$5 at the door. First time guests, no charge!

National Model Railroad Association
P.O. Box 1328
Soddy Daisy TN 37384-1328
www.nmra.org

SCHEDULES

NEXT BOARD MEETING
Tuesday, October 21, 2014
Host: Bob Liberman
28 Van Drive
Bordentown, NJ 08505-1927
609 298 7337

All members are invited.
Please let us know if you plan to attend.

2014 MER FALL CONVENTION
OCTOBER 16-19
Ramada Plaza Hotel
1718 Underpass Way
Hagerstown, MD

PHILADELPHIA DIVISION MEET
Saturday, November 1, 2014
Brandywine Towne Center
Wilmington, DE

NJ DIVISION NOVEMBER MEET
Saturday, November 15, 2014
Knights of Columbus Hall
15 East Lacey Road
Forked River, NJ 08731

Contest:
Detailed/Weathered Tank Cars

Clinics:
To be determined

NJ DIVISION AREA HOBBY SHOPS

Sattler's Hobby Shop*
14 Haddon Ave.
Westmont, NJ 08108
(856) 854-7136

Jackson Hobby Shop*
2275 West County Line Rd.
Jackson, NJ 08527
(732) 364-3334
www.jacksonhobby.com

The Train Room*
715 Arnold Ave.
Pt. Pleasant Beach, NJ 08742
(732) 892-5145
www.thetrainroomNJ.com

Bob's Hobbies and Crafts
67 S. Broadway
Pitman, NJ 08071
(856) 589 1777
Bobshobbiesandcrafts@yahoo.com

Yankee Dabbler - Track 33
101 W. Kings Hwy.
Bellmawr, NJ 08031
yankeedabbler@aol.com

*Offers 10% discount to NMRA members

Know a hobby shop that we should list? Send all information to the editor so it can be included here.

VIEW FROM THE CAB

Bob Clegg

A trainload of stuff has been going on this summer. First, this will be my last issue as the editor of *Clinkers* please welcome our new newsletter editor, Geert Marien. The November issue will be his first issue. Not much will change at first, but as time goes on, I'm sure he will be putting his own personal touches on the publication. I look forward to Geert's contributions and assistance to the division. Please welcome him and give him your support.

Election of Board of Directors

Since this is the September issue of your newsletter you will be receiving a copy of your ballot with postage affixed and imprinted with the return address for the election for your board of directors. If you receive this in hardcopy, it's included in the envelope along with this newsletter. If you receive this online, it will be sent to you along with your annual information form. Please return only the ballot in the envelope. You can return your information sheet at the September meet, or you can mail it separately.

Of course, if you are not a resident of the NJ Division as defined by the NMRA, you will not receive a ballot.

Check pages six and seven for candidates statements and photos.

2015 MER Convention

On May third, on rather short notice, we held the first meeting of the Convention committee.

We now have a few volunteers for the major tasks.

Fred Willis will head up the clinics working with John Gallagher, our director and clinics coordinator. If you can contribute to the effort, please contact Fred or John. They will be more than happy to hear from you. Don't forget, at this point you have just over a year so you can put a lot of polish on your presentation.

Chuck Higdon will head up the Operation Session and Home Tour group. He'll be assisted by Michael Mosher, our tour coordinator director. Again, if you can be a host for an op session or an open house, or both, contact these guys.

After inquiring into several possibilities, we have now determined a venue for the convention. Our home base will be the Hotel ML, formerly the Marriott, on Route 73 right at the I 295 exit. Their bid was by far the best that we received.

Finally, we've had several very good suggestions for prototype tours, but we need to do a lot more leg work before announcing any of them. If you have an idea, let us know. The more irons we put in the fire, the more likely we'll have success tours arranged.

Hagerstown Convention

Going to Hagerstown for the MER Fall Convention? Need a ride? I have two seats available. Call or email. First to make contact gets the seat!

ACHIEVEMENT PROGRAM NEWS

PJ MATTSON, MMR & DICK GENTHNER, MMR

Dick Genthner usually writes this column then sends it to me for corrections and/or additions, but he is taking a break this edition.

The last few years the AP program has grown in our division. Many of you have tried to achieve some of the awards. Those of you that have tried have done a really good job.

Thomas Griffiths has earned his Motive Power award and is currently getting ready to have his Scenery submission judged. By the time you read this, that should have been completed!

Other than that, it's been a little slow. Now that the weather is warm, outside activities have become our interest. I'm sure we will all get back to some serious modeling in the this fall.

In the meantime have a great summer with your families and friends.



PJ Mattson, MMR
pj mattson@comcast.net
856 467 0421

Dick Genthner, MMR
argent1@optonline.net
732 462 0216

ACHIEVEMENT PROGRAM

GOLDEN SPIKE AWARD

APPLICATION FORM

is on page 9 in *Online Color Extras*.



NEW JERSEY DIVISION MODEL CONTEST NEWS

Bill Grosse, Jr. Contest Chairman

At our May meet in Middletown, I presented a certificate and dues voucher to Richard LaRue. Richard's entry was chosen as the winner of the Detailed Display / Scene / Diorama / Module Contest at our March meet in Hamilton Twp.

The contest for this meet was Detailed Diesel Locomotives. We had 10 members bring in entries in HO scale, with a total of 12 very well done locomotives. The winner of the contest was Frank Neufeld with his Jersey Central Box Cab #406. Frank will receive a certificate and dues voucher at our September meet.

The other entries were:

Dave Albertson	CNJ GP7's # 1525 and # 1526
Chuck Diljak	Wyoming Valley Box Cab #1000
Rich Olszewski	Lehigh Valley Hammerhead #211
Jim Niedermaier	CNJ NW2 #1061
Tom English	CNJ #2004 Double Ender Red Ball
Bruce Barrett	UP SD40-2 #3593, Desert Storm Unit
Joe Zebrowski	Alco PA-1's #216 & #207
Glyn Thomas	Minnesota Commercial RS-27 #MNNR 318
Jim Homoki	CNJ 6601 Leased B&O

Go to page 10 of the Online Color Extras section for more photos of these great models!

Thank you to everyone who entered their models in the contest.

Remember to vote for your favorite entry as a way to thank those who enter.



If you have a model category you would like to see as the topic of a contest, please let me know at the contest table and I will try to add it to the next fiscal year schedule.

The contest schedule for fiscal year 2014 – 2015 has been set as follows;

September 2014	- Detailed Steam Locomotives
November 2014	- Detailed/Weathered Tank Cars
January 2015	- Detailed/Weathered Refrigerated (Reefer) Cars
March 2015	- Dual Contest: Prototype and Model Photos
May 2015	- Any Scratch Built Rolling Stock



Meet Continued from page 1

Have you ever considered running an oversized load during an operating session?

Our second clinic will be presented by Dick Perry, Here is a synopsis:

MR electronics have evolved exponentially through the years, with a plethora of features and options available today. Dick is an

electrical engineer who has applied his background in animations, computer driven electronic controls and other features on his Perryville & Highlands RR.

Dick recently earned the Model Railroad Engineer: Electrical Certificate in the NMRA Achievement Program. He will show how some of these present day electronic features can help modelers complete the requirements

for the EE Certificate.

Come see these great clinics. There will also be the model contest so don't forget to bring your detailed and weathered steam engines. Of course we'll have swap tables, refreshments, the chance to see old friends and perhaps make some new ones...all the stuff that makes the New Jersey Division meets well worth your time!



CANDIDATES FOR 2014 - 2015 BOARD OF DIRECTORS

My name is Jack Menaker and I love trains!

I didn't receive a Lionel train set when I was young. I first developed my interest in trains at the age of 15 or 16. I grew up in Brooklyn NY, so the only trains I knew about were New York City Transit subway cars and elevated rail.

I have been married for 47 years and have two great children and 3 wonderful grandchildren. My daughter is a Graphic Design Project Manager with Bristol Meyers-Squibb in New Brunswick and my son is a Field Engineer with New Jersey Natural Gas Co. in Wall, NJ.

I am a retired U.S. Navy Commissary man and reached the rank of CS-5. I retired from the food industry two years ago after having served in it for over 50 years. I am currently working in my own business of Food Safety and Quality Consulting.

I have served as president of my family organization that has been incorporated for over 70 years, am a past president of the Lakewood Model Railroad Club, and I am currently on the Board of Directors of the New Jersey Association for Food Protection.

My main interest is in building structures although I have started operating on another member's layout. I am a member of the RailRats, a round robin group of over 20 members in central NJ and Staten Island. We operate the Jersey Mercantile Railroad which is a fictional short line set in the mid 1950s serving Lakewood and Newark NJ. .

I have been of some service to the members of the NJ Division by making arrangements for the successful May 2013 meet in Lakewood. Now I would like to have your vote so that I can be of even greater service to the division.



William (Diamond Bill) Howard

I come from Connecticut originally, and have lived in California, Illinois, Georgia, Pennsylvania and Massachusetts and Midway Island.

I settled in New Jersey in 1984 to open a business and have been here ever since.

Late in the 1990's I was able to find the time to return to the model Railroad hobby. Thanks to my mentor, Jake Evaul, I got into a militaristic Operations group known as the South Jersey Friday Night Operators. This group opened my eyes to a side of the Railroad hobby I never knew. I spend a lot of time these days operating and building within the Hobby. I greatly enjoy the friends this Hobby has afforded me. My own HO Model Railroad requires 14 people to operate and covers an area of about 800 Square Feet.

I became a NJ Division Board member in 2009. I am reasonably well known in the division through contacts made running the Video Library. During my tenure as video librarian It has expanded to include over 100 tapes, 150 DVD's including a commercial tape inventory and always current catalog. We have a section for members to video record and archive their own home layouts.

Hobby History:

NMRA, MER and NJ Division member since 1998
Member South Jersey Friday Operators since 2000
Attended all MER and some NER regional conventions since 2001
NJ Division Video Librarian and Cameraman since 2002
Volunteered for, and worked the Cherry Hill Depot Convention 2002
OPS sig member since 2003
Organize and store raffle and Door Prizes for the NJ Division since 2010
Full time Volunteer at Princeton Junction MER convention 2010

I ask for your vote so that I can continue contributing to the division as a member of the Board of Directors.



My name is Bill Grosse and I am very interested in being on the Board of Directors of the NJ Division.

I have attended all but a couple of the Board meetings over the past 3 years. I have learned how the Division operates and have been able to support and work with the Board's activities.

I volunteered my services to the current board to help with duties that needed to be done. I have been the Member Contact Chairman for the 4 northern counties (Mercer, Monmouth, Burlington, and Ocean) since late 2012, welcoming new members and reminding of renewal time.

Next I added another duty, as I became Contest Chairman beginning January 2013, to help Director Chris Widmaier while he was very busy with other responsibilities. I have been making the contest schedules, running the contest table, awarding winners and writing the Contest Report in the Clinkers Newsletter.

You may have also noticed me at our meets assisting the current Directors as needed such as selling raffle tickets and helping at the check in table besides at the contest table.

I live in Hamilton, Mercer County, with my wife Barbara and Daughter Alycia. Just over a year ago I began attending operating sessions and have become very interested in that part of model railroading. I am currently in the process of starting to build an HO railroad of my own.

I have been involved with 2 volunteer fire departments beginning in 1977, and as a career Firefighter/EMT, Fire Captain 1985 – 2008 until a work accident/injury forced me to retire. Now Trains Rule.

In the Fire Service I have served as Secretary, Treasurer, Trustee, Financial Secretary, and Committee Chairman. On the Fire Ops side I have served as Lieutenant, Captain, Assistant Chief, Deputy Chief, and Chief.

I like being part of the administration and operations of the organizations of which I am a part.



Thomas V Lavin

I am a train nut – A Pennsylvania Railroad AVID FAN. I have been modeling since I was 8 years of age. For Christmas my father obtained a layout from a neighbor whose son had outgrown it. It was 1930's Lionel trains – A layout built by Master Electrical Corp in NY City for customers. It cost in 1938 \$250.00 including three sets of trains. I played with it till I was 12. I had been looking at Lionel catalogs and begged my father to get me a “more modern” train set. He got me in 1954 a Lionel set (one I subsequently found out was marketed only for Masters) consisting of a PRR Turbine #6200 operating barrel car (gray), operating milk car (white with brown roof, operating searchlight car, double deck stock car, tank car and PRR n5c cabin car. Lionel never made the set; only for Masters in 1954. I gave all of them to my brothers when the call of the wild (girls) reached me in my teens. I don't know what happened to them, but some of my younger brothers have told me that they have found out that they were worth a lot. Money didn't mean anything to me, just the memories.

I grew up in Brooklyn, NY graduating from St John's University with a BBA in Accounting and Economics (Economic Honor Society – Kappa Delta Gamma), a MS in Operations research from NYU and an MBS in Taxation from Pace College. I held various jobs in corporate world till starting my own accounting business in 1973 in New Jersey. I sold my business in 2005 and am now “partially retired”.

My modeling was in Lionel till 1973 when I joined the Pacific Southern Model Railroad Club, Rocky Hill, NJ. I then switched to HO scale and model the PRR and NH. (Yes I am also a juice jack). I was elected Trustee of the club in 1990 till 2006. I joined the PRRT&HS in 1983 and the Philadelphia Chapter in 2000. I was elected Treasurer in 2007 and am in that capacity as well as a Board member now. I am also a member of the New England Chapter of The PRRT&HS, The Middle Division Chapter of the PRRT&HS, The Delaware Valley Chapter of the

See Lavin on page 7



Directions to the meet

From the northern part of the division

Use **I-195 West** and **I-295 South** as appropriate. Take **I-295 South** to **Exit 26** and stay **right** to exit onto **NJ 42 South**. Once on the exit ramp, keep **left** to stay on **NJ 42 South**, then continue for about 2 miles (keep right after passing Creek Rd.) to **NJ 55 South**. See local direction below.

From Eastern Ocean and Monmouth Counties

Use the directions above, or take the **Garden State Parkway** south to **exit 44**. Turn **right** onto **CR 575, Pomona Road** and follow to **US322**. Turn **right** onto **US 322** and **stay right** to enter the **jug handle** to follow **US 40 west**. Continue on **US 40** to **Mays Landing** and follow the directions from Atlantic County via Mays Landing below.

From Delaware

Take **US 40 East** to **NJ 55 South**. See local direction below.

From Pennsylvania

Cross the **Commodore Barry Bridge** and continue **east** on **US 322**. Take **NJ 55 South** and follow local directions below.

From Cape May County

Take **NJ 55 north** to Exit 24 Turn left onto **NJ 49, Main Street**. At first traffic light, turn **right** onto **Wade Blvd**. Continue to **Broad Street**. Location is on the **far right**. Turn **right** and **immediately left** into the parking lot

or

Find your way to **NJ 50** in **Tuckahoe** and proceed **west** on **NJ 49** for **16.3 miles**. Turn **right** onto **Wade Blvd.**, the meet location will be on your **right** on the far right corner at the traffic light at **Broad Street**. Turn **right** onto **Broad Street** and immediately **left** into the parking lot.

From Atlantic County via Mays Landing

Take **US 40 west** through **Mays Landing**. Turn **left** at the Traffic Light at **Avenue of the Pines**, then right on **Bears Head Road** (also called **Millville-Mays Landing Road**). Continue about **18.3 miles**. The meet location will be on your **right** just before the traffic light at **Wade Blvd**.

Local Directions:

Take **Exit 26** onto **County 555, Wheaton Blvd**. go **right** at the exit. Turn **left** onto **Wade Blvd**, (it only goes left and there's a turn lane.) Follow **Wade Blvd 1.3 miles** to the meet location on your **left** just before the traffic light at **Broad Street** (look for the BIG cross buck.)

Lavin Continued from page 6

NRHS, an NMRA member since 1988, a New Jersey division member since 2005 (prior to that I was in the Garden State Division of the Northeastern Region. I moved to Delanco, NJ in 2005).

I am an avid modeler who enjoys the time retirement now affords me to work on my hobby and in my hobbies' organizations. I bring my accounting and business acumen to the table

and feel as a Director that I can contribute in many ways. As trustees and officers of other organizations I have brought cost savings so that in one instance the organization can save 50% on publications; my computer skills, although mostly self taught are excellent (I helped program part of the interface on a layout with computer so that signals and switches can operated for DCC); I have also helped build many modelers layouts, carpentry bench work, track and switch construction, detection,

power and signal wiring, buildings, scenery, etc. Today most organizations in our field (trains and model railroading) are experiencing a decline in members and interests. I am a doer, not a planner. I think you can sum up my philosophy as the antithesis of what John Lennon said "life is what happens while you are making plans."

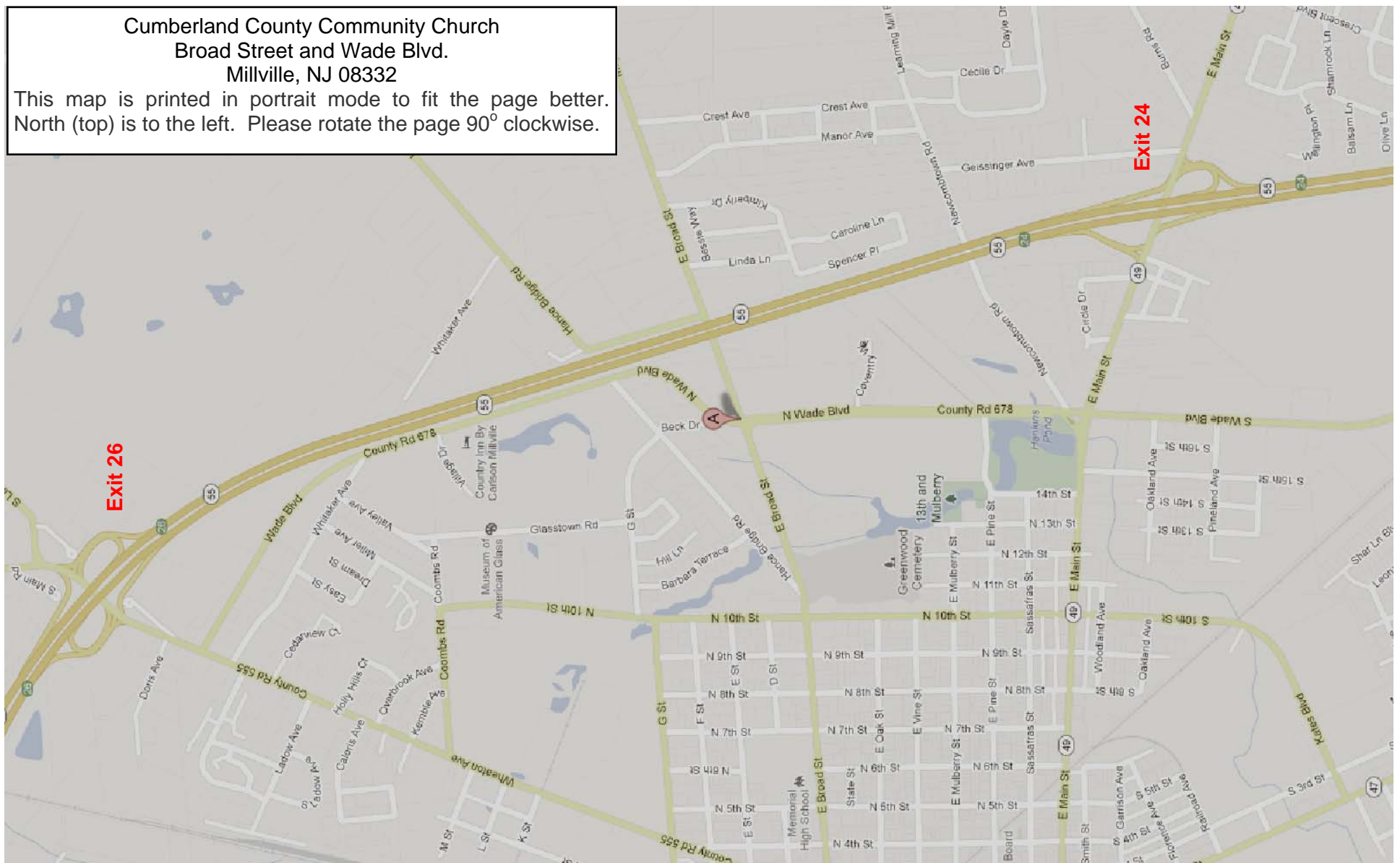
As a director, I will not be making plans but rather putting them into action.

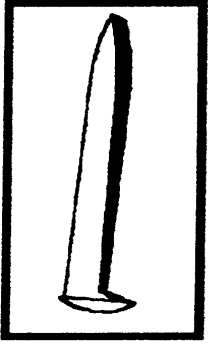


MAPS TO THE SEPTEMBER MEET

Cumberland County Community Church
Broad Street and Wade Blvd.
Millville, NJ 08332

This map is printed in portrait mode to fit the page better.
North (top) is to the left. Please rotate the page 90° clockwise.





ACHIEVEMENT PROGRAM GOLDEN SPIKE AWARD APPLICATION FORM

PLEASE COMPLETE THIS APPLICATION FORM AND SEND TO YOUR REGIONAL OR DIVISIONAL AP CHAIR

Member's Name: _____ NMRA#: _____ EXP: _____

Address: _____ City: _____

State/Prov: _____ Country: _____ Postal Code: _____

Date Submitted: _____ Region: _____

The Golden Spike Award will be awarded to any NMRA member who has completed the Qualifications Checklist, obtained the necessary signatures and who does not hold MMR status. It will be administered by the regional and divisional AP Chairs. AP regulations and definitions apply for scratch building and super detailing. To qualify for the award the member must complete the following checklist, obtain the signature of the divisional AP Chair or another NMRA member designated by the divisional Chair. The divisional Chair will submit the signed form to the regional AP Chair who will issue the Golden Spike Award certificate.

QUALIFICATIONS CHECKLIST:

1. Rolling Stock (Motive Power & Cars):

Display six units of rolling stock either scratch built, craftsman kits or super-detailed commercial kits.

2. Model Railroad Setting (Structures & Scenery)

Construct a minimum of eight square feet of layout including scenery.
Construct five structures either scratch built, craftsman kits or super detailed commercial kits. If a module has less than five structures, additional structures separate from the scene may be presented.

3. Engineering (Civil & Electrical)

Three types of track required (e.g. turnout, crossing, crossover, etc.). All must be properly ballasted and installed on proper roadbed. Commercial track may be used.
All installed track must be properly wired so that two trains can be operated simultaneously (e.g. double track main, single track main with sidings, and block or command control).
Provide one additional electrical feature such as power operated turnouts, signaling, turnout indication, lighted buildings, etc.

Witness: _____ Print Name: _____ NMRA #: _____

Regional AP Chair: _____ Region: _____

MAY MODEL CONTEST ENTRIES



Dave Albertson	CNJ GP7# 1525 (1526 similar not shown)
Rich Olszewski	Lehigh Valley Hammerhead #211
Jim Homoki	CNJ 6601 Leased B&O
Chuck Diljak	Wyoming Valley Box Cab #1000
Jim Niedermaier	CNJ NW2 #1061
Glyn Thomas #MNNR 318	Minnesota Commercial RS-27

MAY MODEL CONTEST ENTRIES



Tom English
CNJ #2004
Double Ender Red Ball

Bruce Barrett
UP SD40-2 #3593,
Desert Storm Unit

Joe Zebrowski
Alco PA-1s #216 & #207





We've lost, at least temporarily, another great model railroad. Bob Price has moved and the Burlington Northern Hi Line Subdivision has been torn down. We look forward to it's rebirth at it's new address in the near future.



Two photos of the Patcong Valley Club's railroad in Richland. Although at this date it is unconfirmed, we hope to be able to include them on the tour for the September 20 meet in Millville.



Photos of probable stops on the September home tour: Top: Pete Suhmann and bottom: Gus Foster. We have not yet confirmed these, since this issue has gone to press early in order to get your ballots to you in a timely manner, but they are probable. Don't forget to vote.