

Train Orders

Official Newsletter of the New Jersey Division,
Mid-Eastern Region, National Model Railroad Association



September 2022

Volume 33 Number 4

For September, We Head South to Millville

John V. Gallagher, Superintendent

It has been a while since we visited our southern counties for a division meet. The Cumberland County Community Church [CCCC] welcomes us for our program, the Division's annual business meeting, election results, and election of officers. Members may participate in our contest plus the door prize, raffle, the "Last Chance Table, white elephant sales and any other sales. Layouts will be open in the afternoon for visits by members, giving local modelers the opportunity to display the progress of their layouts.

The CCCC's location, just off exit 26 of NJ Route 55, makes navigation easy. See the attached address for GPS navigation on page 2 or follow the directions from exit 26 to the church on page 8. The doors will open about 8:40 a.m. for sign-in at the Welcome Table. Please be sure to wear your name tag. Also have available a face mask should there be a change in the pandemic and to wear should a layout owner ask visitors to mask inside the house. Remember, it is possible that a member of the household may be medically vulnerable to COVID. Thank you for your cooperation.

If you haven't obtained your NJ Division name tag, notify me at njdiv.super@gmail.com or call me at 856 228-2239 to request one. In the email subject, enter "Name Tag Request" and give your

complete name and NMRA number in the message body.

We ran a New Jersey Division election in August. Election Chairperson Mike Prokop sent out ballots either electronic or by US Mail if you don't have an email address. We hope you voted by the due date so your vote counts.

Our clinic for this meet is "The Atlanta Rolling Mill, circa 1855," presented by Thom Radice, our Civil War modeler. After research, Thom built an exceptional model of this industrial facility for his Civil War era model railroad. Come, see and learn. Please consider presenting a clinic at a future NJ Division meet. Contact me to discuss your ideas. I will pass the clipboard sign up at the meet. Enter your name, please. We are planning the Works in Progress multiple clinics for March 2023.

Finally, our division lost two members to illness this year. I learned of one, who passed in March, very recently. If you learn of a fellow member's serious illness or death, please let me know promptly so we can reach out. Thank you.

**No one can do everything
But everyone
Can do something
Please Volunteer!**



Next Division Meet
Saturday September 10, 2022
9 a.m. to 12:00 noon
Cumberland County
Community Church
1800 E Broad St,
Millville NJ 08332

Contest:
House Colors; Your railroad color scheme .
Clinics:
Thom Radice
"The Atlanta Rolling Mill,
circa 1855"
Table reservations:
Contact the Superintendent by
September 6, 2022. 856 228-2239

In This Issue

September Meet	1
NJD Information Page	2
View From The Cab	3
Model Contest News	4
Member Information Form	5
Anniversary Gondola	6
Do U Remember	7
Open Layouts	8
Free is Good	11
Board of Directors Election	11
Golden Spike Application	12

Train Orders

Official Newsletter of the New Jersey Division. NMRA
P.O. Box 276

Crosswicks, NJ 08515-0276

<https://njdivnmra.org>

Train Orders is published 5 times per year for the NMRA members and friends of the New Jersey Division. Online newsletter is always available at NJ Division website. Mailed hardcopy newsletter is \$15.00 per year. The opinions expressed do not necessarily reflect those of the Division. Products and publications mentioned in Train Orders in no way constitute an endorsement by the Division.

Contributing to Train Orders

Train Orders welcomes contributions from the New Jersey Division membership. Letters, articles, photos and other items may be submitted to the editor, Fritz Plenefisch, at fplen3@verizon.net or to 327 Sharps Lane, Hamilton, NJ 08610-1334. Please include return postage if you would like materials returned.

Deadline for the next Train Orders issue October 15, 2022

Superintendent and Director of Clinics

John Gallagher
njdiv.super@gmail.com
856 228-2239

Clerk/Secretary

Joe Zebrowski
609 268-9451
trackjack@comcast.net

Director- Membership

Geert Marien
732 757-1061
geert@mindspring.com

Director-Editor

Fritz Plenefisch
609 585-7660
fplen3@verizon.net

Assistant Superintendent, Bookstore and Door Prizes

Mike Prokop
njwrr@aol.com
609 586-9818

Director-Contest Chair

Jack Menaker
732 908-6571
jackmenaker@yahoo.com

Director-Technology

Rick Stoneking
856 296-9291
stonekingr@comcast.net

Division AP Chair

PJ Mattson, MMR
856 467-0421
pjmattson@comcast.net

Paymaster/Treasurer

Tom Neukirchen
609 584-5184

Visit us at <https://njdivnmra.org> and join us on
Groups at <https://groups.io/g/NJDivNMRA>

NJD Information Page

MEMORIALS

New Jersey Division, NMRA

We learned that the following members passed recently. Please remember them in your thoughts and prayers

James (Jay or Jim) Vanderbeek, 66,
on March 26, 2022

Joined NMRA in 1976, Life Member

Robert (Bob) Judge, 87, on July 16, 2022

Joined NMRA in 1963

September Division Meet

Saturday September 10, 2022

Cumberland County Community Church,
1800 E Broad St, Millville NJ 08332

Next Board Meeting

Thursday October 27, 2022, 12 Noon

Host – Jack Menaker

Please let us know if you plan to attend
njdiv.super@gmail.com

November Division Meet

Saturday November 19, 2022

Deptford Township Community Center
1219 Delsea Drive (NJ RT 47)
Westfield, NJ 08093

NJ Division Sponsored 2025 Mid-Eastern Region Convention HELP WANTED!

Committee Chairpersons; Workers.

Contact John Gallagher
at 856 228-2239 or
njdiv.super@gmail.com

NJ Division Area Hobby Shops

* AAA Hobbies & Crafts

706 N. Whitehorse Pike,
Magnolia, NJ 08049
(856) 435-7645
www.AAAHobbiesandCrafts.com

* Sattler's Hobby Shop

14 Haddon Ave.
Westmont, NJ 08108
(856) 854-7136

* The Train Room Online Store

www.thetrainroomNJ.com
e-mail thetrainroomnj@msn.com

* Yankee Dabbler - Track 33

101 W. Kings Hwy, Bellmawr, NJ
08031

* Offers discount to NMRA members.
Must show Current Membership Card

Membership Information

Any person who is a member of the NMRA and lives within the boundaries of the NJ Division as defined by the NMRA is also a member of the division. Non member guests are welcome to attend three of our meets, after which they will be asked to join the NMRA.

NJ Division Annual Activity Fee:
\$10.00 (optional and includes 5 meets)
or individual meets \$5 at the door.

First time guests, no charge!

National Model Railroad
Association P.O. Box 1328
Soddy Daisy TN 37384-1328

View From The Cab

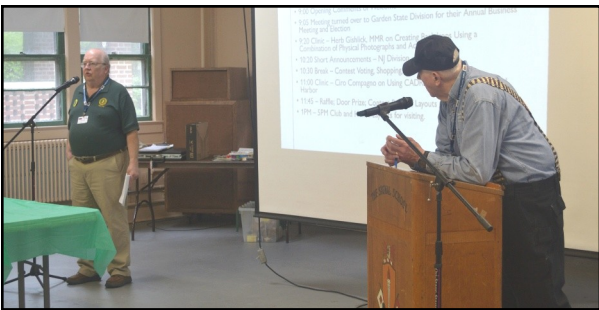
John V. Gallagher, Superintendent

We had an excellent meet on May 7th at Camp Evans with our Garden State Division friends, enjoying this first in-person joint meet since COVID.



Members of the NJ Division and the Garden State Division watch a clinic.

Thanks to all members in attendance and also NJD members Jim Judge and Steve Lang for their help in scheduling and providing the facility along with the opportunity to visit the Garden State Central Model Railroad Club's on site layout.



Steve Lang [left] welcomes the two division's members to Camp Evans.



Ciro Compagno GSD (left), Herb Gishlick, MMR, NJD (center) receive clinic certificates of appreciation from NJD Superintendent John Gallagher (right).

Herb Gishlick, MMR (NJD), assisted by his spouse, and Ciro Compagno (GSD) presented interesting and informative clinics.



Garden State Division Superintendent Mark Moritz conducts his business meeting.

All photos James Walsh GSD

We also enjoyed the raffle, door prizes, sales, and the contest on "Critters." Thanks to GSD Superintendent Mark Moritz and his members

for participating in the meet. We look forward to a future joint meet next year.

NJD division attendance was 38 plus several spouses. Most came from Monmouth and Ocean counties. I don't have a count of GSD attendance but estimate over 25. The meet was on broadcast on Zoom.

The board discussed meet locations and decided on a rotation throughout the geography of the division. This helps division members to attend meets closer to home. This would allow members to host an Open Layout tour for division members to visit their layout to see the progress and talents displayed. This sharing constitutes mutual learning purpose of NMRA. A local meet includes reduced travel time and distance.

At this time meets will be in Vineland/Millville for September, Deptford in November, a location needs to be determined for January, Hamilton [Switlik Park] with a Works in Progress program in March, a joint meet with the Garden State Division in north Jersey in May, and a special workshop in July with a program to be determined.

The clinics clipboard for volunteers gets passed around at each meet. I thank the members who sign up for a future clinic presentation. Remember, **no clinics = no meet program**. While there are names on the list, it doesn't mean I someone for each meet.

View continued on page

View continued from page 3

Volunteers have outside conflicts with time or events that conflict with a meet date. I am suggesting volunteers work on their proposed clinic to be ready for a call, rather than putting it together after my call. This makes program planning efficient and less stressful. If you require assistance in developing your clinic, please call me. I can help. I spent 40 years in teaching. Please think about a subject you could present. It can be about, motive power, rolling stock, structures, scenery, layouts, operations, collecting, the prototype, history of railroading or the hobby in general etc. If you want to discuss your topic or clinic idea, please contact me by phone or email

Write an Article for the TRAIN ORDERS, Why not? I am not an author or poet or novelist, or...you say.” *Train Orders* [TO] is written by members of the New Jersey Division. This could be you! Yes, board members write *TO* items that relate to their responsibilities as members of the board or committees. What could you write about? You were out railfanning and took photos. There is a short article! Select your best photos from your digital camera. Tell the readers what you saw, what you learned from your observations, and how you can/will use that information. Point out this in the photos.

You discovered how to solve a modeling problem. Take photos and send them with a

short written description to *TO* editor, Fritz Plenefisch. If the photos have too much clutter in the background, retake them with the tools and work piece placed on a white sheet or poster board. Be sure it is well lit. Fritz can assist you as well as me.

Volunteer to do a task for the division. Suggestions, ideas, outside presenters as clinicians, videos, YouTube presentations, books, train watching locations, hobby shops, products for model railroading [including a review if you bought it, built it, use it, love it, hate it, trashed it... Take photos..



Model Contest News

By Jack Menaker, Model Contest Chairman

Welcome back to all the members who help make the modeling contest work. We had a great meet in June when the contest was your favorite Critter. Now I have to admit that the Contest Chairman (Jack Menaker) screwed up.

I forgot to bring my camera to the Meet. I had another member take the pics. THE PICS ARE OFFICALLY LOST! I don't know what I did with them. The Member who took the pics sent them to me and then wiped them from his camera.

So there are no pics of the entries. As they say, water under the bridge is gone downstream.

The winner of the “Critters” contest was (deep breath) again. Bill Howard. Bill will receive the obligatory certificate and yearly pass.

Now, the good news! Almost everyone has a great chance to win the next contests since Bill Howard will not be participating in the contest again since he maxed out on winning.

The next contest for September 2022 will be **HOUSE COLORS ???**

Do you have a private railroad? One that you named yourself? One that has never been? Do you have a name and color scheme for that railroad? WE WOULD LIKE TO SEE IT.

You can show an engine (steam/diesel/ electric) a car (box/reefer/gondola etc)

The next meet is at the Cumberland County Community Church in Millville, NJ. (Just a quick note; Millville in the home to the New Jersey Motorsports track [a really great automobile racetrack])

The schedule for upcoming meets is as follows;

September 2022 –Your Railroad Yard Building picture.

November 2022 - a Small Industrial facility on your railroad picture.

January 2022 – Mini Diorama



If You Haven't Submitted This Form Yet, Please Complete And Send It In, Or Bring To Next Meet

2022-2023 Division Member Information Update Form

Please Complete and Return to the New Jersey Division

Name: _____

Address: _____

City, State, Zip: _____

Contact Information

Home / Cell Phone: _____

E-mail Address: _____

If you have a website, the address: _____

May we share your phone number with other members? ----- Y / N

May we share your e-mail address with other members? ----- Y / N

Do you want your Train Orders e-mailed? ----- Y / N

May we eliminate your hardcopy version of Train Orders? ---- Y / N
(Yes only if you will access Train Orders online or via e-mail)

Would you like to receive e-mail notices of New Jersey Division
Special Events? *At most 2 per month!* ----- Y / N

To be included in the NJDivNMRA groups.io, please submit your request
online through the groups.io page. njdivnmra@comcast.net for more info.

Modeling Information (Optional)

Do You have a layout? ----- Y / N, In which Scale(s) do you model? _____

If yes, can you be open at meets? --- Y / N If yes, best meet location? - _____

What is the name of your railroad? _____

Prototype(s) followed, if any? _____

Online / Email Newsletter Only

No Charge

Mailed hardcopy of newsletter (Optional)

\$15

Annual Activity Fee (Optional)

\$10

Total Amount Enclosed -

\$

NMRA Member Number: _____

NMRA Expiration Date: _____

Received By NJ Div. Date (Office Use Only)

Thank You for being part of the NMRA and
the New Jersey Division

Can you help your division in any way? ---- Y / N

If so, in what way are you willing to be involved?

Make Checks Payable to:

NJ Division, NMRA

Return to: NJ Division NMRA

PO Box 276

Crosswicks, NJ 08515-0276

New Jersey Division 50th Anniversary Gondola

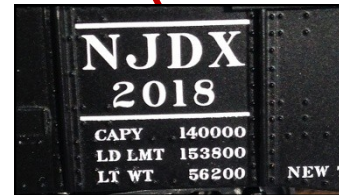
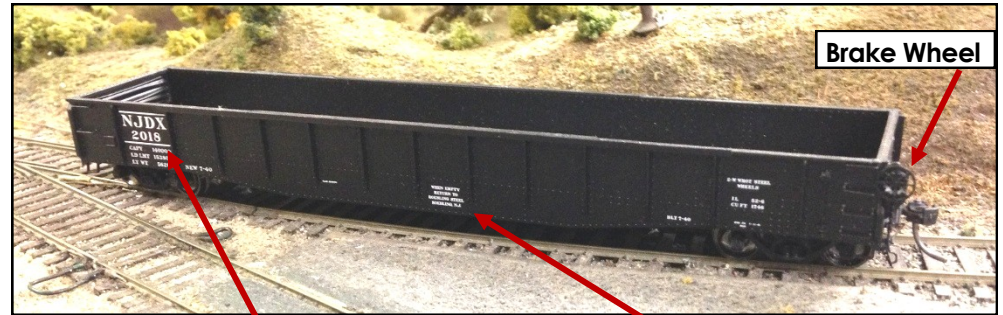
75th Anniversary Gondola

A review of the cars. They are \$35 each, or a set of two for \$65. Car numbers are 1968 and 2018, which was the year that the New Jersey Division was founded and the year we celebrated our 50th anniversary. The model is from Tangent Models and is a superb model of a 52'6" Riveted Drop End Gondola with 70 ton trucks. The placement of the brake wheel on the side is an identifying feature of a drop end Gondola. They're ready to run and come with Kadee couplers.

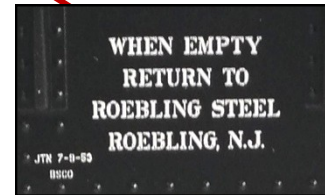
We acquired equal amounts of the two car numbers. Cash or check will consummate the deal and you'll be hauling stuff around your layout in no time!

These are excellent looking and beautifully running cars, but, a car not decorated for a prototypical railroad, they do have the look of a gondola that you might see in any train consist from the 1930's to the 1980's.

To order cars Contact Rick Stoneking at stonekingr@comcast.net or by mail use the Order Sheet. USPS Priority Mail postage is: \$9 for one car and \$10.75 for two cars.



The Reporting Marks "NJD" for this car identify the owner as the New Jersey Division and the "X" designates a Private or Non-railroad owner.



This Stencil indicates the Gondola is in Assigned Service to Roebling Steel. It must be returned to Roebling after its load has been delivered.

The car body is black with white lettering and data conforming to the 1950s

The cost is \$35.00 for one car or a set of both numbers for \$65.00

A check made payable to the NJ Division must be included with your order.

Name _____
 Address _____
 City _____ State _____ Zip Code _____
 Telephone _____

See Tangent website for more information
 support@tangentscalemodels.com
 Return this form to NJ Division NMRA;
 PO Box 276, Crosswicks, NJ 08515-0276

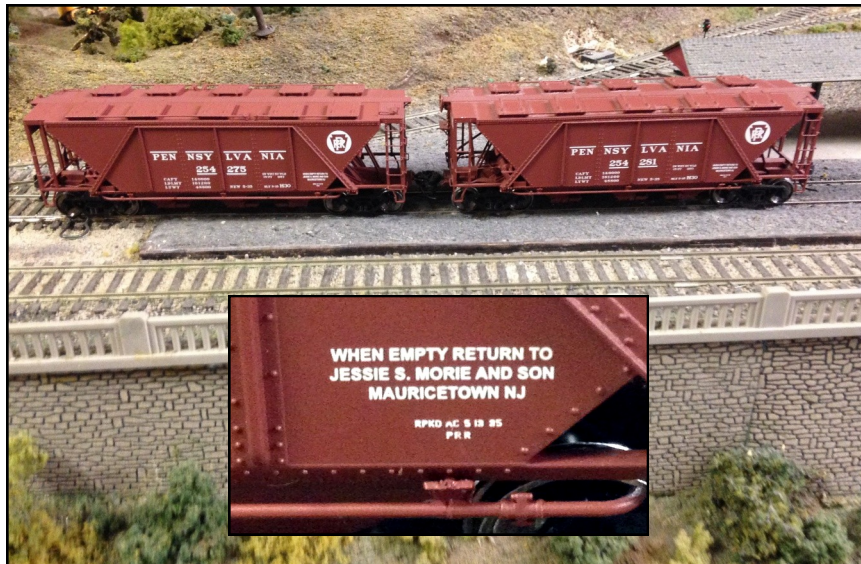
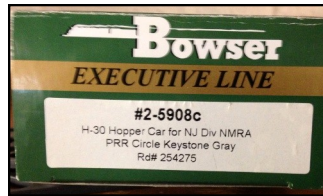
Do U Remember? By Fritz Plenefisch

In 2013 the New Jersey Division offered a model of the Pennsylvania Railroad's H-30 Covered Hopper Car. In addition to this being a detailed model and to give it a local theme, a "WHEN EMPTY RETURN TO JESSE S. MORIE AND SON MAURICETOWN NJ" instruction was added to the cars.

The "CLINKERS" indicated there were 200 cars ordered from Bowser. Cars were sold individually for \$25 or a set consisting of four

cars with different numbers for \$90. There were 50 cars generated for each road number. The photo shows car numbers 254275 & 254281. If anyone can supply the two missing numbers or a photo of a four car set with all the numbers please send this information and/or photo. It will be in a future issue of "TRAIN ORDERS".

Please send to Fritz Plenefisch
at fplen3@verizon.net



All photos
F. Plenefisch

Garden State Central
Model Railroad Club
Presents

All Scale Model Train Sale and Show

Saturday, September 17, 2022
10 am—4 pm

Held Indoors at
InfoAge Science and History
Museums

2201 Marconi Road,
Wall, NJ 07719

Admission:

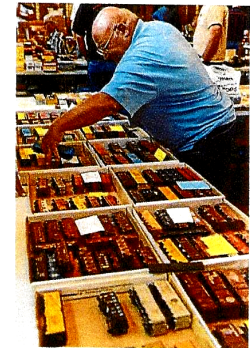
Adults \$10
Children 12 & under \$8

Includes admission to
all museums

Museum Hours:
11:00 am—5:00 pm

Free Parking

Tables are available and will be supplied.
Vendors contact Steve: rsln@aol.com for rates and reservations
Vendor set up times are:
Friday evening 7:00-10:00 pm and
Saturday morning 7:00-10:00 am




The Nutmeg Division is proud to host all interested NMRA members to central Connecticut for the 2022 NER Convention. The convention will be held on September 15-18 at the Marriott Hartford / Windsor Airport Hotel, conveniently located at Exit 38 of I-91.

Second Section

Layouts open for viewing for the SEPTEMBER Meet

For the September meet we have four layouts to visit.

Maps listing them along with directions and the time they will be open are available at the meet.

Please contact a Board member if you would like to host an open house for your railroad when we are close to your area. 

Directions from RT 55 Exit 26

Take exit 26 for South Wheaton Ave (County RT 555)

Left onto Wade Blvd (County RT 678)

Church is about 1-1/4 miles on the left.



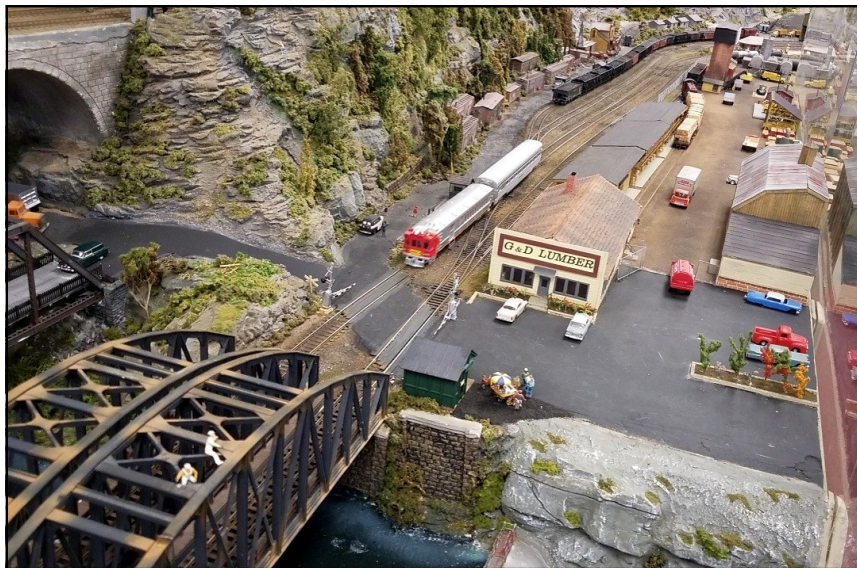
This is a freelanced MKT (Missouri, Kansas and Texas) railroad on a 40x8 main and then going around side and back wall ending in a 4x24 classification yard (not yet built). The layout is still under construction and any suggestions will be appreciated. Track layout not finalized.

Charles Kluxen Photo



The layout depicts the Northern Division, DuBois Subdivision of the fictitious Delaware & Allegheny Railroad, a segment between Philipsburg, NJ and Clearfield, PA . Shown here are two views of the Philipsburg Station area.

Joe Zebrowski Photos



A museum quality layout modeling a railroad operating between Scranton, PA and Weehawken, NJ in the 1940 to late 1950s era.



A highly detailed layout based on the Pennsylvania Railroad. Includes many structures, bridges and stations seen on the Pennsy.

Clinic for the September 2022 Meet

John V. Gallagher, Clinics Director

Thom Radice will present a clinic on **The Atlanta Rolling Mill, circa 1855**. What has this to do with model railroading or railroading in general?

Thom is a creative and accomplished model railroader. He models railroading during the Civil War era and all who visited his layout will attest to his skills and historical accuracy. His passion for Civil War history guides his modeling giving an animated lesson on how railroads played such an important role for both the Union and Confederate military. They gave military leaders the ability to move large units of an army across long distances in a few days. All arrived refreshed and ready for combat. The options were movements of wagons and horses plus marching troops over dirt roads or by river or canal boats. The options could take weeks.

Too often, we observe railroading with late 20th Century or 21st Century eyes and do not realize the advances railroads provided in the 19th Century. We may forget that in the mid-1800s, technology grew significantly with the industrial revolution in the United States. This occurred before the invention of electrical power, the light bulb, motor vehicles, a paved highway system, radio, and many other technological advances we have today. Yet, innovative technological entrepreneurs of the 1800's pushed manufacturing technology toward meeting the needs of the society then.

In Thom's clinic, we will learn about the Atlanta Rolling Mill which produced steel products that met the needs of business, military and transportation circa 1855. He studied this industry and applied his knowledge to build an impressive model of this plant on his model railroad.

Come and hear Thom's story of his research to learn about this industrial facility and the technology employed to produce specialized steel products. Thom will describe how he turned this information into a model of the facility and how it relates to railroading and society's needs.

We often focus on the trains and operations in model railroading. However, railroads would not exist without an economic purpose. Most who have studied railroad history of the 20th Century know of the fallen flags, railroads that could not maintain economic success with the changes in transportation technology and business needs. Trucking and an advanced highway system plus the expansion of airlines siphoned away customers. That is what railroads did to wagon, river and canal transportation in the 1800's.



LOOK SOUTH IN 2022

Mid-Eastern Region Convention

October 20-23, 2022
 Hilton University Place Hotel
 Charlotte, NC

- Special pre-convention tour of the NC
Transportation Museum available
- Lots of clinics on a wide range of topics
- Many self-drive operating sessions and
layout tours
- Special bus tour to the Southeastern Short
Line and Narrow Gauge Museum
plus 4 layouts
- Juried model contest plus available AP
evaluations
- Company store open to member
consignments
- Banquet speaker from a leading

Let's do it again!

Door Prizes-Raffle-Free Table

By Mike Prokop

Your reading the latest edition of Train Orders, so that means the 2022-2023 season of New Jersey Division meets is upon us. With the September meet rapidly approaching on Saturday the 10th, expect to experience a fun time at the door prize and raffle tables! Many fantastic items will be presented and available to win. Make sure to bring some luck with you. If for some reason you forgot your lucky charm that day, there's always the Free Table of which to participate. Last season the Free Table was a hit, with many of you scrabbling and scrambling over the table to extract a precious item to add to your layout or possibly begin a kit-bashing project. Keep in mind the items available from the Free Table are things you folks donate. So, look around under your layout for those worthwhile goods that you'll never use but could be given up to help a fellow modeler. Hey, you never know!



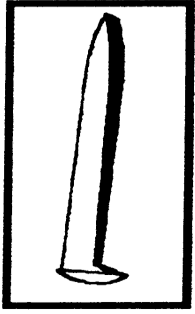
BOARD of DIRECTORS ELECTION

At the time you are reading this election ballots have already been sent out to all eligible New Jersey Division members. Hopefully you have all cast your vote for the candidates running in the election. Election results will be announced at the New Jersey Division meet on September 10th which takes place in Millville at the Cumberland County Community Church.



A standard Pennsylvania Railroad end of train kerosene marker lantern. These were used in pairs at end of passenger cars without electric marker lights and on the tail end of a caboose.

Fred Ciocciola Photo



ACHIEVEMENT PROGRAM GOLDEN SPIKE AWARD APPLICATION FORM

PLEASE COMPLETE THIS APPLICATION FORM AND SEND TO YOUR REGIONAL OR DIVISIONAL AP CHAIR

Member's Name _____ NMRA#: _____ EXP: _____

Address: _____ City: _____

State/Prov: _____ Country: _____ Postal Code: _____

Date Submitted: _____ Region: _____

The Golden Spike Award will be awarded to any NMRA member who has completed the Qualifications Checklist, obtained the necessary signatures and who does not hold MMR status. It will be administered by the regional and divisional AP Chairs. AP regulations and definitions apply for scratchbuilding and superdetailing. To qualify for the award the member must complete the following checklist, obtain the signature of the divisional AP Chair or another NMRA member designated by the divisional Chair. The divisional Chair will submit the signed form to the regional AP Chair who will issue the Golden Spike Award certificate.

QUALIFICATIONS CHECKLIST:

1. Rolling Stock (Motive Power & Cars):

Display six units of rolling stock either scratchbuilt, craftsman kits or super-detailed commercial kits.

2. Model Railroad Setting (Structures & Scenery)

- Construct a minimum of eight square feet of layout including scenery.
- Construct five structures either scratchbuilt, craftsman kits or superdetailed commercial kits. If a module has less than five structures, additional structures separate from the scene may be presented.

3. Engineering (Civil & Electrical)

- Three types of trackage required (e.g. turnout, crossing, crossover, etc.). All must be properly ballasted and installed on proper roadbed. Commercial trackage may be used.
- All installed trackage must be properly wired so that two trains can be operated simultaneously (e.g. double track main, single track main with sidings, and block or command control).
- Provide one additional electrical feature such as power operated turnouts, signaling, turnout indication, lighted buildings, etc.

Witness: _____ Name: _____ NMRA #: _____

Regional AP Chair: _____ Region: _____